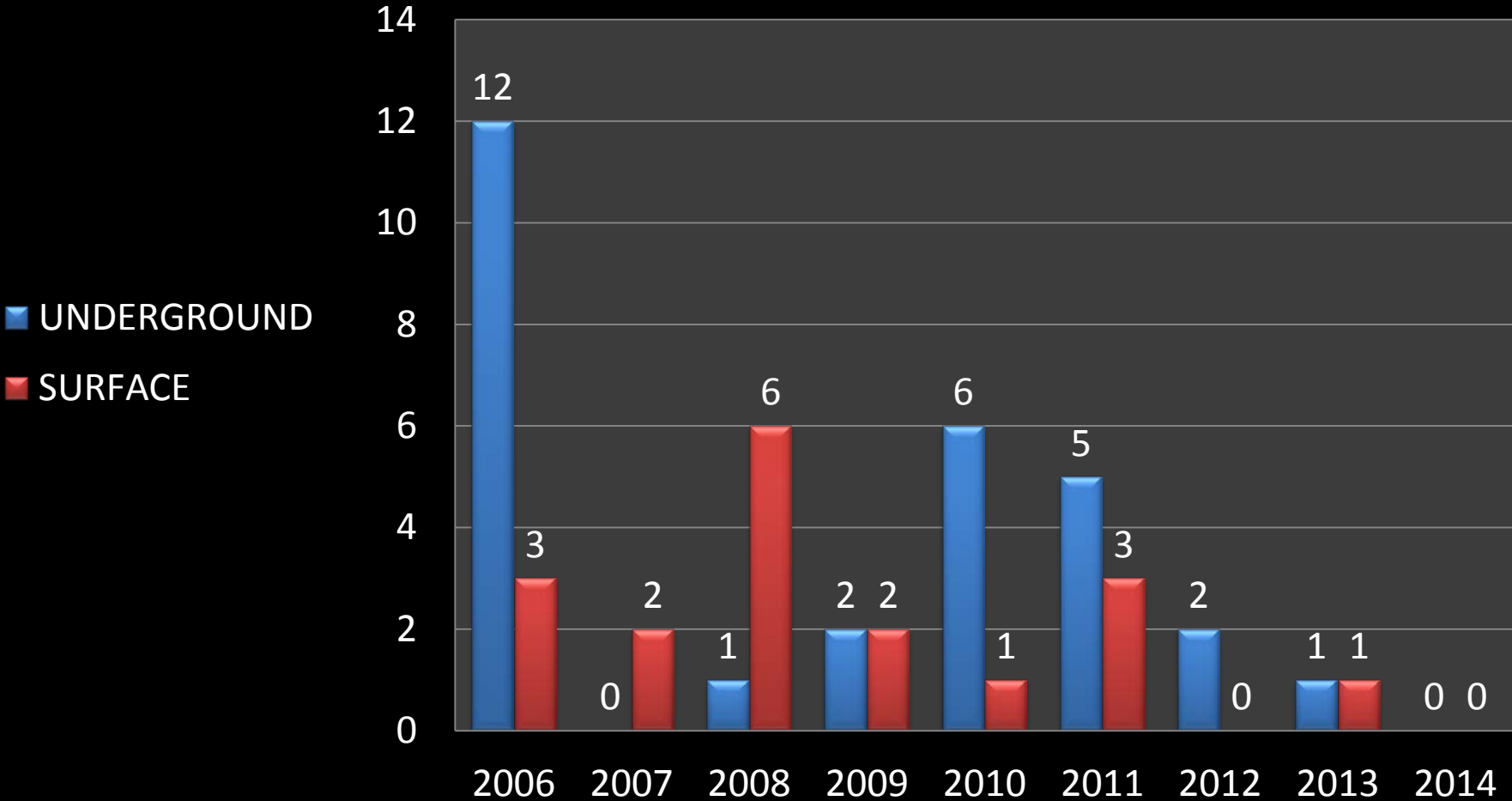


DIVISION OF MINE SAFETY



Commissioner: Steve Hohmann
Director: Franklin J. Reed

KENTUCKY FATALITIES BY YEAR



0 FATALITIES FOR 2014!

3 SERIOUS ACCIDENTS

EMERGENCY AWARENESS BULLETIN

(EAB – No. 1 – 2014)

Kentucky DMS1 Serious Non-Fatal Accident No. 1- Struck by Machine

On January 9, 2014, a 27 year old miner with 2 years of mining experience was seriously injured while working at an underground mine in the Madisonville District.

The accident occurred while the victim was walking between the coal rib and the ATRS of the roof bolter. The victim was accessing the work station for the installation of a row of roof supports. The supports (board row) were to be used during the installation of a cut through curtain (By pass). The victim was pinned between the ATRS and the coal rib (pillar) when the operator began to reposition the machine towards the middle of the entry.

THE ACCIDENT SCENE
NO. 2 ENTRY



RECOMMENDATIONS TO PREVENT A SIMILAR OCCURRENCE

1. Employees shall be positioned in an area that will afford them maximum protection.
2. The equipment operator shall be aware of the position of fellow miners prior to moving equipment.
3. Miners shall be trained to recognize potential red zone hazards.

EMERGENCY AWARENESS BULLETIN

(EAB – No. 3 – 2014)

Kentucky DMS1 Serious Non-Fatal Accident No. 2- Fall of Roof Rib

On February 14, 2014, a 47 year old mine foreman with 29 years of mining experience was seriously injured while working at an underground mine in the Hazard District.

The accident occurred while the victim was removing rib material with a jack hammer. The victim was removing the material to correct an area of close clearance along the belt-track entry. A portion of the rib material had been removed when the rock (row) overlying the coal seam fell and struck the victim. He was pinned between the fallen debris and the mine floor.

THE ACCIDENT SCENE
NO. 4 ENTRY



RECOMMENDATIONS TO PREVENT A SIMILAR OCCURRENCE

1. Thorough examinations shall be conducted and unsafe conditions shall be corrected prior to performing work.
2. Work performed near unsafe rib conditions shall be done from a safe location.
3. All personnel involved in removal of rib material shall be trained in the associated hazards.

EMERGENCY AWARENESS BULLETIN

(EAB – No. 4 – 2014)

Kentucky DMS1 Serious Non-Fatal Accident No. 3- Fall of Roof Rib

On June 8, 2014, a 32 year old Electrician with 14 years of mining experience was seriously injured while working at an underground mine in the Pikeville District.

The accident occurred while the victim was making needed repairs to a water supply line used by the continuous miner. The victim was kneeling next to the left coal rib in the No. 3 entry, when a section of the rib next to the mine roof dislodged and struck him. The victim was pinned between the fallen debris and the mine floor, resulting in serious injuries.

THE ACCIDENT SCENE
NO. 3 ENTRY



RECOMMENDATIONS TO PREVENT A SIMILAR OCCURRENCE

1. Employees shall be positioned in an area that will afford them maximum protection.
2. Loose ribs shall be taken down or adequately supported.
3. Thorough examinations of the roof and ribs shall be conducted and unsafe conditions corrected prior to performing work.

EMERGENCY AWARENESS BULLETIN

January 9, 2014

Kentucky OMSI Serious-Non Fatal Accident No. 1– Struckby/Machinery

On January 9, 2014, a 27 year old miner with 2 years of mining experience was seriously injured while working at an underground mine in the Madisonville District.

The accident occurred while the victim was walking between the coal rib and the ATRS of the roof bolter. The victim was accessing the work station for the installation of a row of roof supports. The supports (board row) were to be used during the installation of a run through curtain (fly pad). The victim was pinned between the ATRS and the coal rib (pillar) when the operator began to reposition the machine towards the middle of the entry.

THE ACCIDENT SCENE NO. 2 ENTRY



RECOMMENDATIONS TO PREVENT A SIMILAR OCCURRENCE

1. Employees shall be positioned in an area that will afford them maximum protection.
2. The equipment operator shall be aware of the position of fellow miners prior to moving equipment.
3. Miners shall be trained to recognize potential red zone hazards.

EMERGENCY AWARENESS BULLETIN

February 14, 2014

Kentucky DMS Serious-Non Fatal Accident No. 2- Fall of Roof/Rib

On February 14, 2014, a 47 year old mine foreman with 29 years of mining experience was seriously injured while working at an underground mine in the Hazard District.

The accident occurred while the victim was removing rib material with a jack hammer. The victim was removing the material to correct an area of close clearance along the belt – track entry. A portion of the rib material had been removed when the rock (brow) overlying the coal seam fell and struck the victim. He was pinned between the fallen debris and the mine floor.

THE ACCIDENT SCENE NO. 4 ENTRY



RECOMMENDATIONS TO PREVENT A SIMILAR OCCURRENCE

1. Thorough examinations shall be conducted and unsafe conditions shall be corrected prior to performing work.
2. Work performed near unsafe rib conditions shall be done from a safe location.
3. All personnel involved in removal of rib material shall be trained in the associated hazards.

EMERGENCY AWARENESS BULLETIN

June 9, 2014

Kentucky DMS Serious-Non Fatal Accident No. 3- Fall of Roof/Rib

On June 9, 2014, a 32 year old Electrician with 14 years of mining experience was seriously injured while working at an underground mine in the Pikeville District.

The accident occurred while the victim was making needed repairs to a water supply line used by the continuous miner. The victim was kneeling next to the left coal rib in the No. 3 entry, when a section of the rib next to the mine roof dislodged and struck him. The victim was pinned between the fallen debris and the mine floor, resulting in serious injuries.

THE ACCIDENT SCENE NO. 3 ENTRY



RECOMMENDATIONS TO PREVENT A SIMILAR OCCURRENCE

1. Employees shall be positioned in an area that will afford them maximum protection.
2. Loose ribs shall be taken down or adequately supported.
3. Thorough examinations of the roof and ribs shall be conducted and unsafe conditions corrected prior to performing work.

AREAS OF FOCUS

FOR 2014

MACHINERY



**ROOF AND RIB
(RIB ROLLS)**



MACHINERY ACCIDENTS

From 2009 to 2013 there have been
23 machinery related accidents
resulting in serious physical injury or death to
30 Kentucky Coal Miners.



Approximate location
of the victims

ROOF AND RIB



From 2009 to 2013 there have been
16 Roof and Rib related accidents
resulting in serious physical injury or death to
16 Kentucky Coal Miners.

ROAD TO IMPROVEMENT



WALK & TALK SAFETY MEETINGS

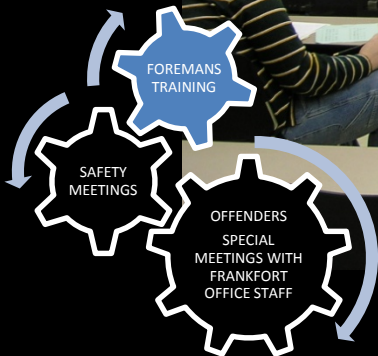


FOREMAN TRAINING

In 2013 the Division of Mine Safety conducted training for 1,741 Surface Foreman & 2,644 Underground Foreman.



**Trained
and/or
Tested
19,184**



SPECIAL MEETINGS

- Red Zones
- Berms



2013 JOB OBSERVATIONS

13,023 Underground Observations



12.5 %

UNSAFE ACTS

TOP 3 UNSAFE ACTS ISSUED IN 2013 UNDERGROUND



ROOF DRILL



SCOOP



CONT. MINER

2013 JOB OBSERVATIONS

8,692 Surface Observations



10 %

UNSAFE ACTS

TOP 3 UNSAFE ACTS ISSUED IN 2013

SURFACE



ROCK TRUCK



DOZER

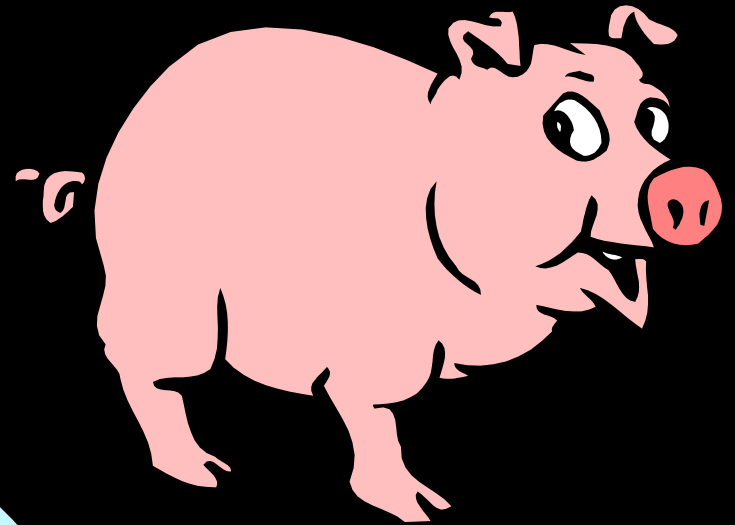


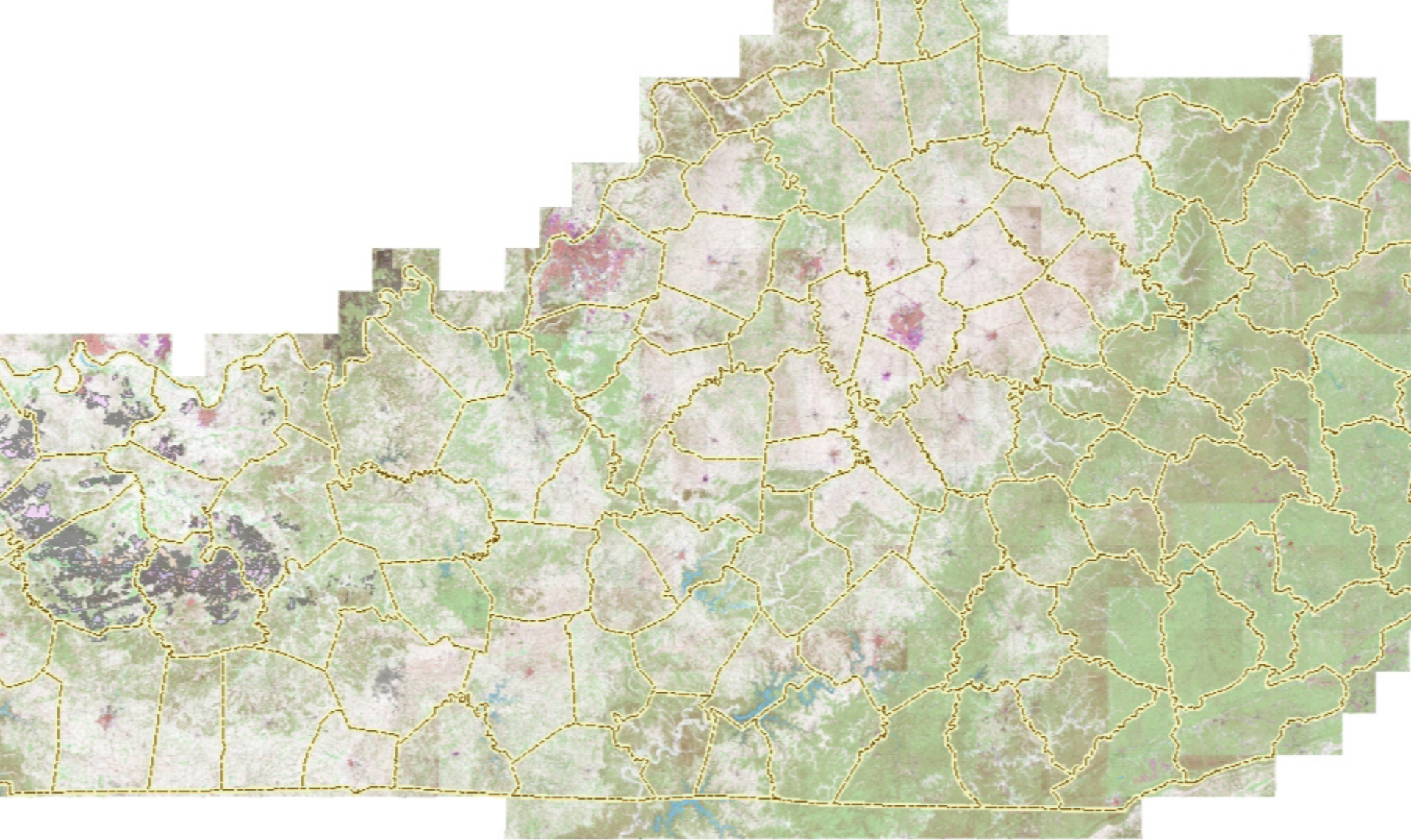
FRONT END LOADER

OVER 90%
OF INJURIES & FATALITIES
IN KENTUCKY COAL MINES
ARE CAUSED BY
UNSAFE ACTS.

SAFETY

PARTICIPATION VS. COMMITMENT





www.minemaps.ky.gov

The Division of Mine Safety remains committed in seeing that our Kentucky miners return home safely to their families at the end of each and every work day.

