



# **THE KENTUCKY ABANDONED MINE LANDS (AML) PROGRAM**

Charles Snavely, Secretary  
Energy and Environment Cabinet

John Small, Commissioner

Kentucky Department for Natural Resources

Bob Scott P.E., P.L.S, AML Director

# AML Origins / Mission

- The Kentucky AML program emerged as a result of the Surface Mining Control and Reclamation Act (SMCRA) of 1977. AML programs are addressed in Title IV of this act
- AML's Mission is to abate hazards to public health, safety, and the environment caused by coal mining that occurred prior to May 18, 1982

# Funding for AML

100% federally funded, state-implemented

- Federal government AML Trust Fund
  - coal operators pay tonnage extraction fee
- Funds distributed annually to states and Indian tribes through a grant process
- Distribution of funds is based on a formula that considers both historic coal production and current production

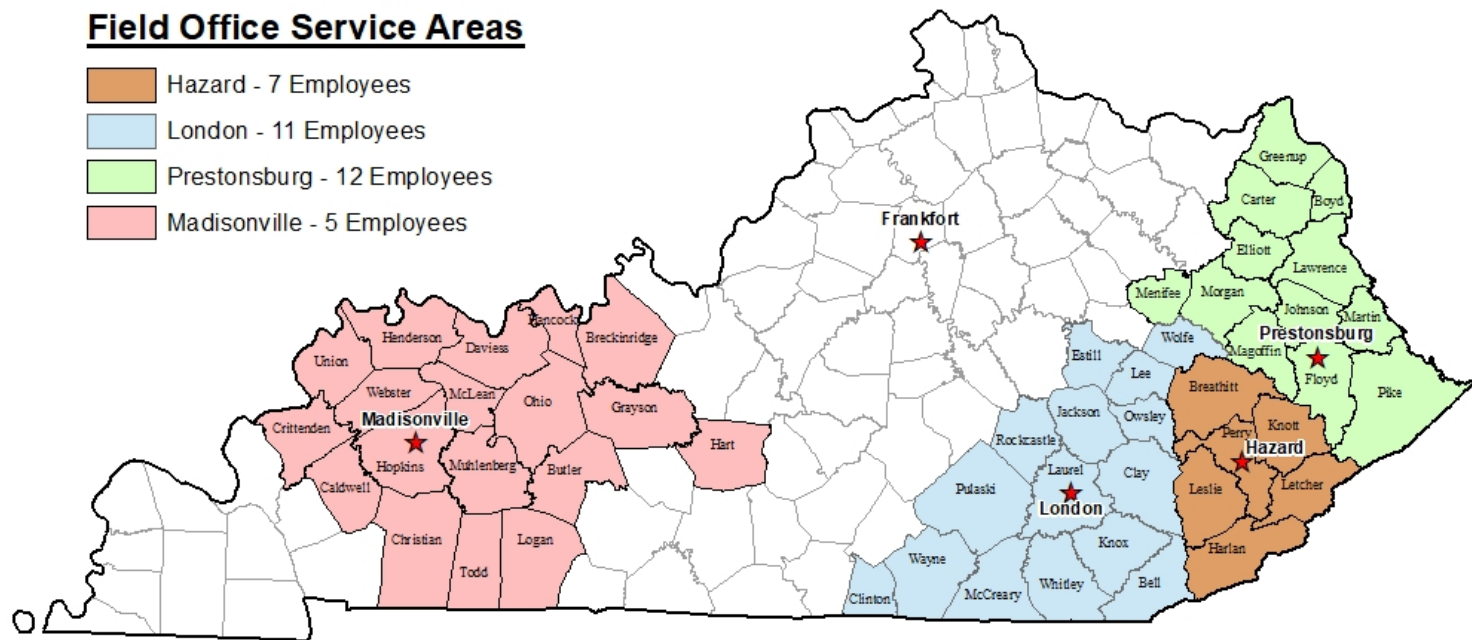
# Office Coverage & Locations

## Division of Abandoned Mine Lands

Frankfort	(502) 564-2141	300 Sower Blvd, Frankfort, KY 40601
Hazard *	(606) 487-1110	101 Bulldog Lane Suite 103, Hazard, KY 41701
London	(606) 330-2085	State Office Bldg, 85 State Police Road, London, KY 40741
Madisonville	(270) 824-7534	State Office Bldg, 625 Hospital Drive, Madisonville, KY 42431
Prestonsburg	(606) 889-1741	3140 South Lake Drive Suite 6, Prestonsburg, KY 41653

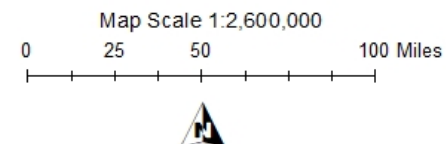
## Field Office Service Areas

	Hazard - 7 Employees
	London - 11 Employees
	Prestonsburg - 12 Employees
	Madisonville - 5 Employees



## State Wide Offices

★ Frankfort - 38 Employees



# AML Division Programs

- AML Grant Program
- Bond Forfeiture Program
- AML Economic & Community Development Pilot Program

# AML Grant

- Investigations
  - Citizen requests for investigations
  - determination of AML eligibility
- Reclamation Projects
  - Design
  - Bid
  - Hazard abatement
- Emergency Response
  - AML took over the emergency program from OSMRE
- Waterline Program
  - Fund water supply replacement projects in coalfield areas
- Acid Mine Drainage Program
  - Grant funding has established an AMD account for long-term treatment and maintenance of AMD sites



# Typical AML problems in Kentucky

- LANDSLIDES



- MINE OPENINGS



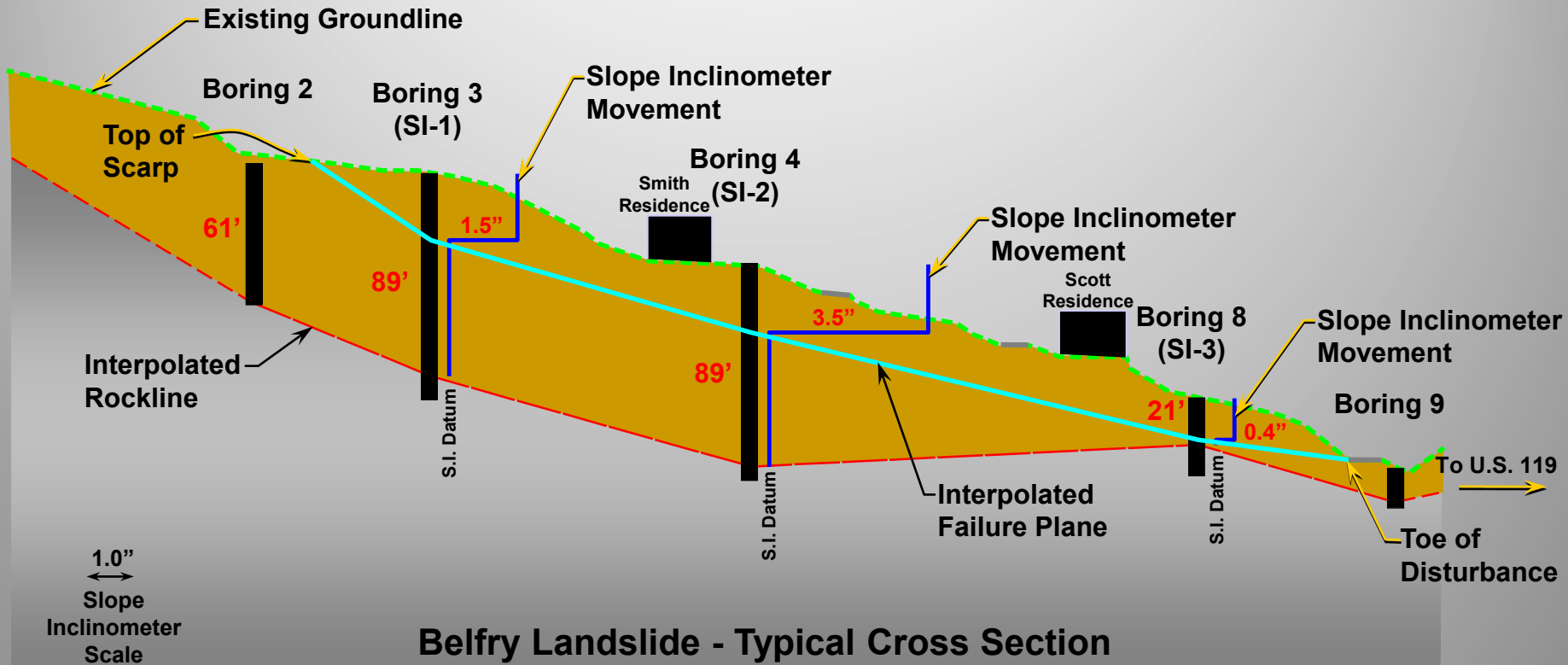
- HIGHWALLS



- COAL REFUSE



# Belfry Slide in Pike County



...to Determine Approximate Failure Plane Location and Calculate Residual Shear Strength of Colluvium



# News Release

Office of Surface Mining Reclamation & Enforcement  
A Bureau of the U. S. Department of the Interior



FOR IMMEDIATE RELEASE

Date: August 26, 2019

Contact: [news@osmre.gov](mailto:news@osmre.gov) (202) 208-2565

## OSMRE Announces Winners of the 2019 Abandoned Mine Land Reclamation Awards

*Bureau to Honor Five States for Exemplary Abandoned Mine Land Reclamation*

WASHINGTON – The [Office of Surface Mining Reclamation and Enforcement \(OSMRE\)](#) is pleased to announce the winners of its [2019 Abandoned Mine Land Reclamation Awards](#). This year's winning projects represent the nation's highest achievements in Abandoned Mine Land (AML) reclamation demonstrating innovative reclamation techniques, and outstanding results in restoring previously mined lands.

Established in 1992, the Abandoned Mine Land Reclamation Awards recognize exemplary state and tribal reclamation projects that reclaim coal mine sites abandoned prior to the signing of the [Surface Mining Control and Reclamation Act of 1977 \(SMCRA\)](#). Eligible projects are funded wholly or in part by OSMRE's AML Reclamation Fund. OSMRE's AML Reclamation Program addresses the hazards and environmental degradation posed by two centuries of coal mining that occurred before SMCRA was enacted.



OSMRE managers, together with state and tribal reclamation officials, determined this year's winners. There are three categories of Abandoned Mine Land Reclamation Awards: National, Small Project and Regional.

**Small Project Award** - Recognizes a project that cost less than \$1 million and is in a state that receives less than \$6 million in annual AML funds

### *Marvel Gob Fire*

Abandoned Mine Land Reclamation Program  
Alabama Department of Labor

An ongoing mine fire at Alabama's old Marvel mines caused havoc in a small community with surface temperatures reaching as high as 930 degrees Fahrenheit on the surface. More than an acre of gob material was burning, generating noxious odors, smoke and fog. Alabama's AML program put out the fire, and reclaimed the site in 50 working days. The project is considered small in scale by reclamation standards, but for people living nearby, Alabama's AML Program solved an important community concern.



**Regional Awards - Honors the best projects  
from around the country**

***Roger Cornett Slide***

Division of Abandoned Mine Lands  
Kentucky Department for Natural Resources

***Interior Region 1***

On a rainy Friday night in April 2018,  
Kentucky received a call from a resident  
concerned about a sudden landslide near his  
home, his rental properties, and a neighbor's  
house. The landslide brought down tons of  
mud, trees, and old coal, threatening people's  
lives and property. Kentucky's quick response  
abated the threats to the residents and the safety  
of their property.

# Acid Mine Drainage

## Lower Rock Creek Project



# Waterline Replacement Program

- AML determines whether agency-eligible, pre-1982 mining has negatively impacted groundwater in Kentucky's rural coalfield counties
- Provides the citizens of the Commonwealth with access to clean, safe water supply by extending waterlines into the affected communities

# Impacted ground water & home usage



# **Bond Forfeiture Program**

**(Bankruptcies, Revelations and the end times)**

- Responsible for reclaiming permits deemed forfeited by DMRE
- Evaluates forfeited permits for reclamation efforts, inventorying site liabilities and developing cost estimates
- Designs, bids and inspects reclamation projects for forfeited permits.
- AML is in great need of Contractors with reclamation experience. AML has Contractor information pamphlet that will walk you through the process

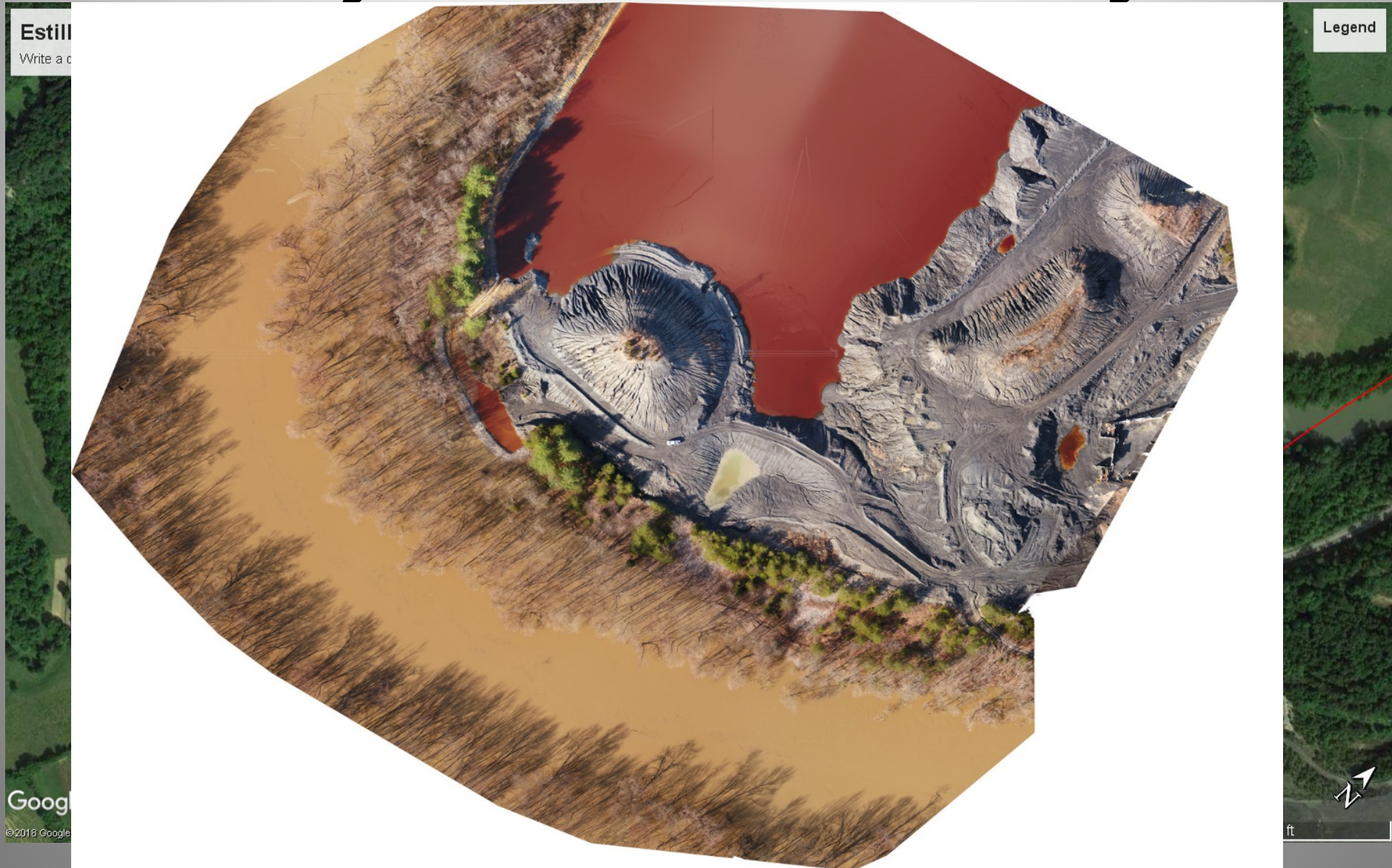
# Forfeited Permits (T&T in Leslie Co.)



# Forfeited Permits (T&T in Leslie Co.)



# AML Enhancement Rule Project in Estill County



# AML Economic & Community Development Pilot Program

- In the Omnibus Appropriations Bill for Fiscal Year 2016 signed by the President, three Appalachian States were designated to receive an additional \$30 million dollars per state as part of a Pilot Project for economic revitalization. These supplemental grants for Pennsylvania, West Virginia and Kentucky are for reclamation of AML sites in conjunction with economic and community development and reuse goals.

Kentucky has or will receive

2016 - \$30 million

2017 - \$25 million

2018 - \$25 million

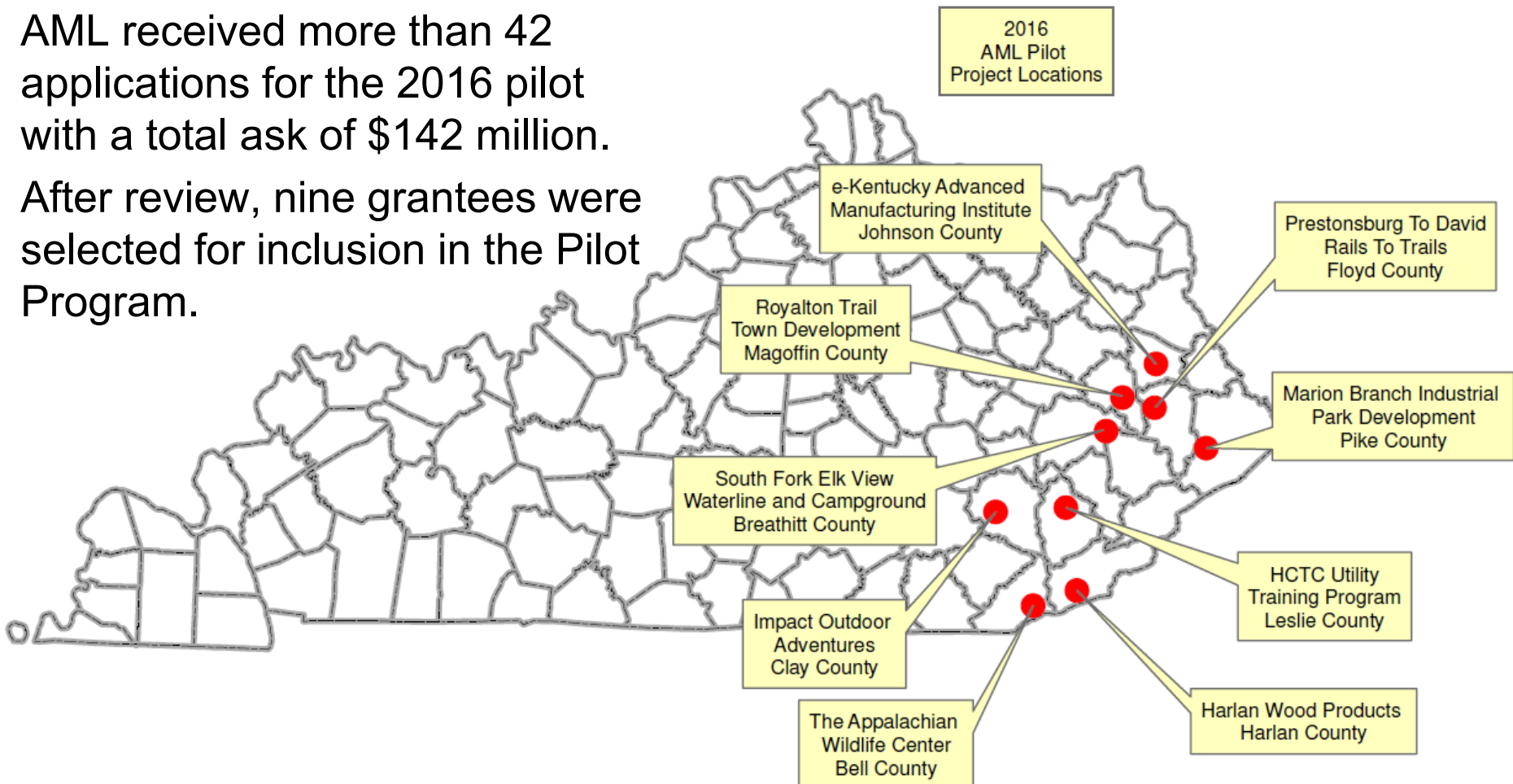
2019 - \$25 million

Through the efforts of Governor Bevin, Congressman Rogers and Senator McConnell Kentucky will receive a total of \$105 million dollars for the AML Pilot Program

# 2016 AML Pilot Program Grant Recipients

AML received more than 42 applications for the 2016 pilot with a total ask of \$142 million.

After review, nine grantees were selected for inclusion in the Pilot Program.



# AML Pilot Project: Appalachian Wildlife Center

- Located in Bell County
- \$12.5 million grant awarded
- Estimated \$32 million dollar investment in total
- Create a wildlife viewing area with elk as the primary attraction, a state of the art visitor and learning center
- Located on a 12,000-acre tract of land



# AML Pilot Project: Kentucky Enterprise Industrial Park Spec Building

- Located in Pike County, City of Pikeville
- \$5.0 million grant awarded
- Construction of a 60,000 square foot spec building at the Pikeville Industrial park. The building will demonstrate what the site has to offer potential businesses and be the cornerstone of development in the park.



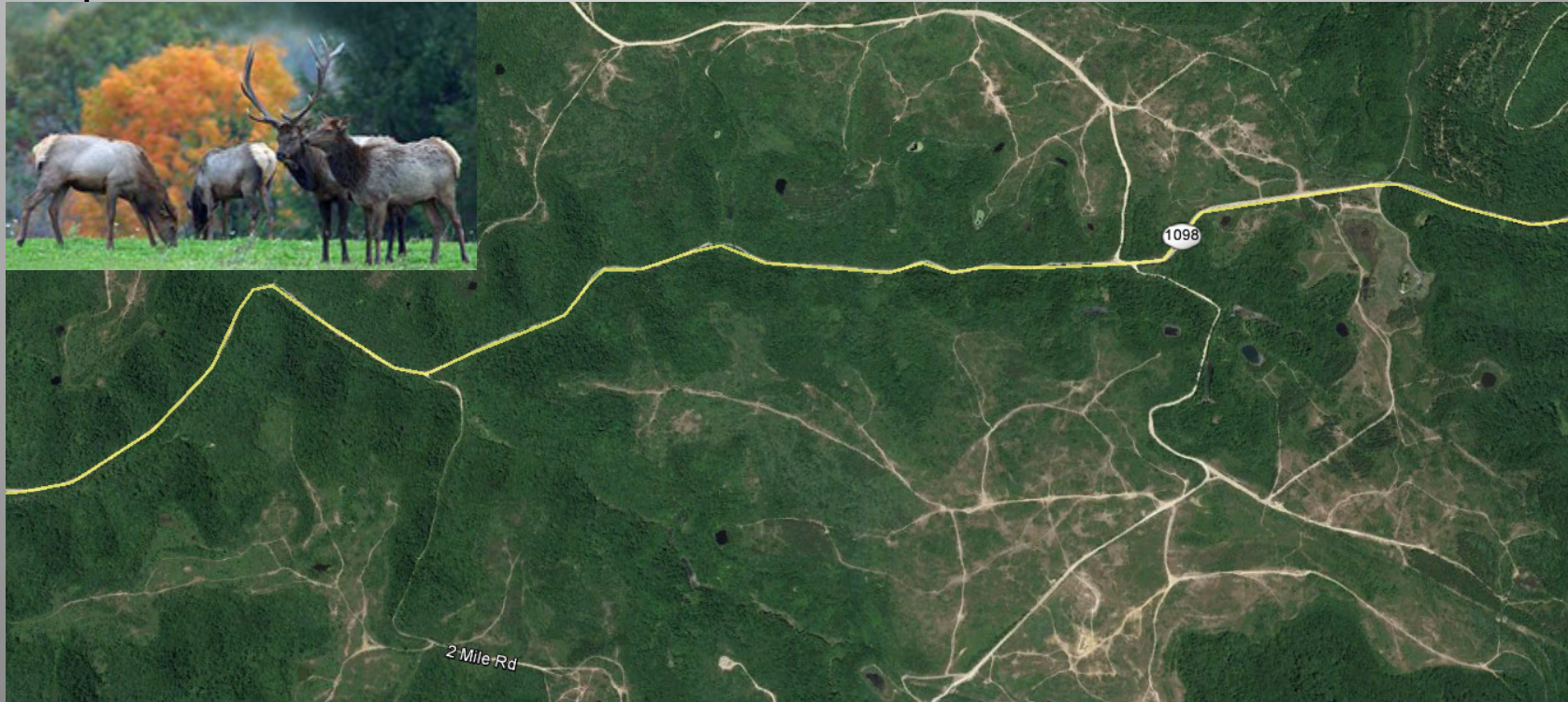
# AML Pilot Project: eKentucky Advanced Manufacturing Institute

- Located in Johnson County
- \$2.5 million grant awarded
- Computer Numeric Controlled (CNC) skills training program for up to 100 students per year to be certified by the National Institute of Metalworking Skills for CNC Machinists in conjunction with HAAS Automation Inc.



# AML Pilot Project: South Fork Elk View Waterline and Campground

- Located in Breathitt County
- \$1.95 million dollar grant awarded
- Construction of a campground and installation of waterline in an existing elk viewing development / ATV trail head. Efforts to spur future development of cabins and other adventure tourism related businesses.



**Problems with building on  
mine sites:**

**They are mine sites.**

# Appalachian Wildlife Center



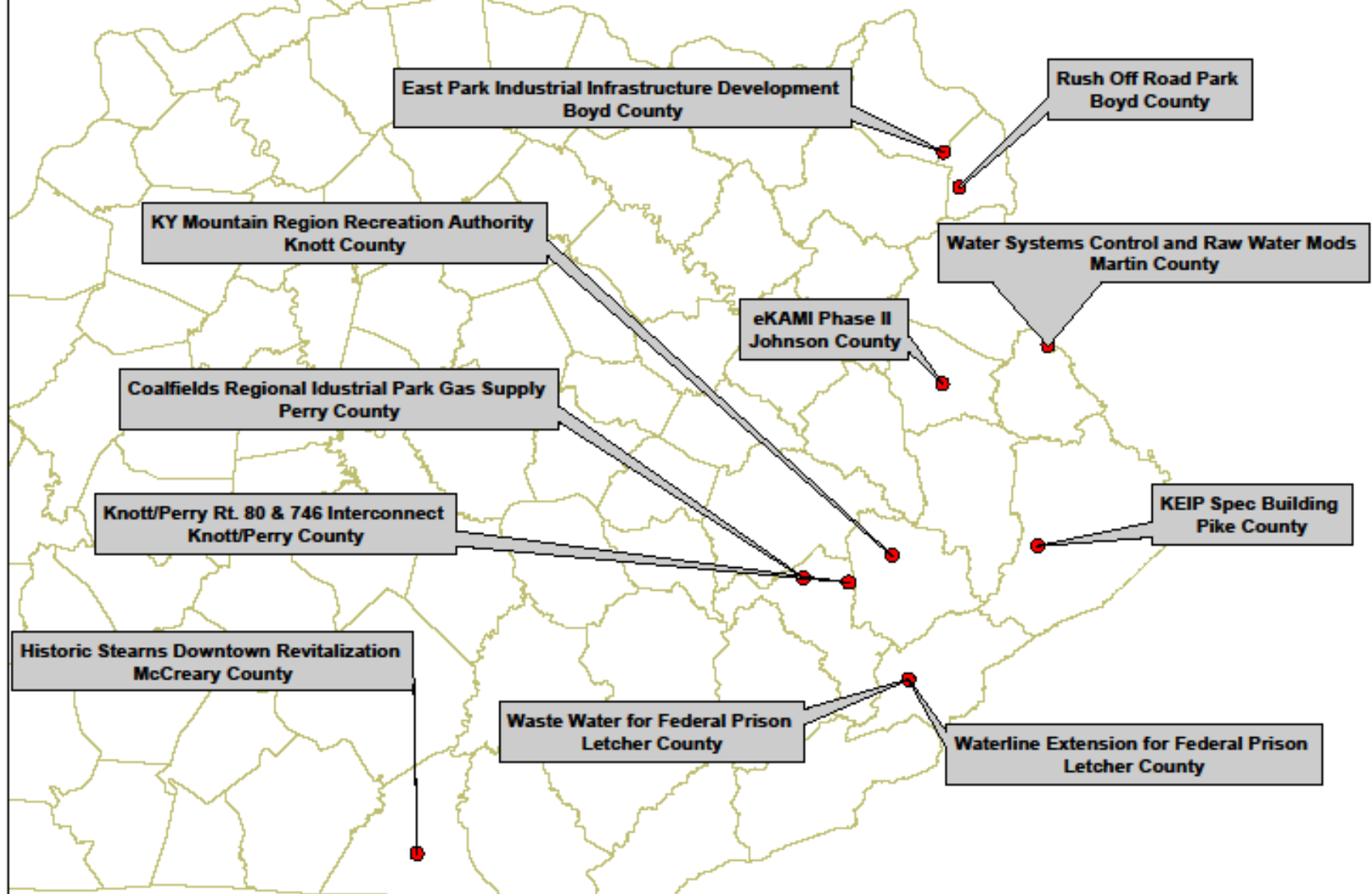




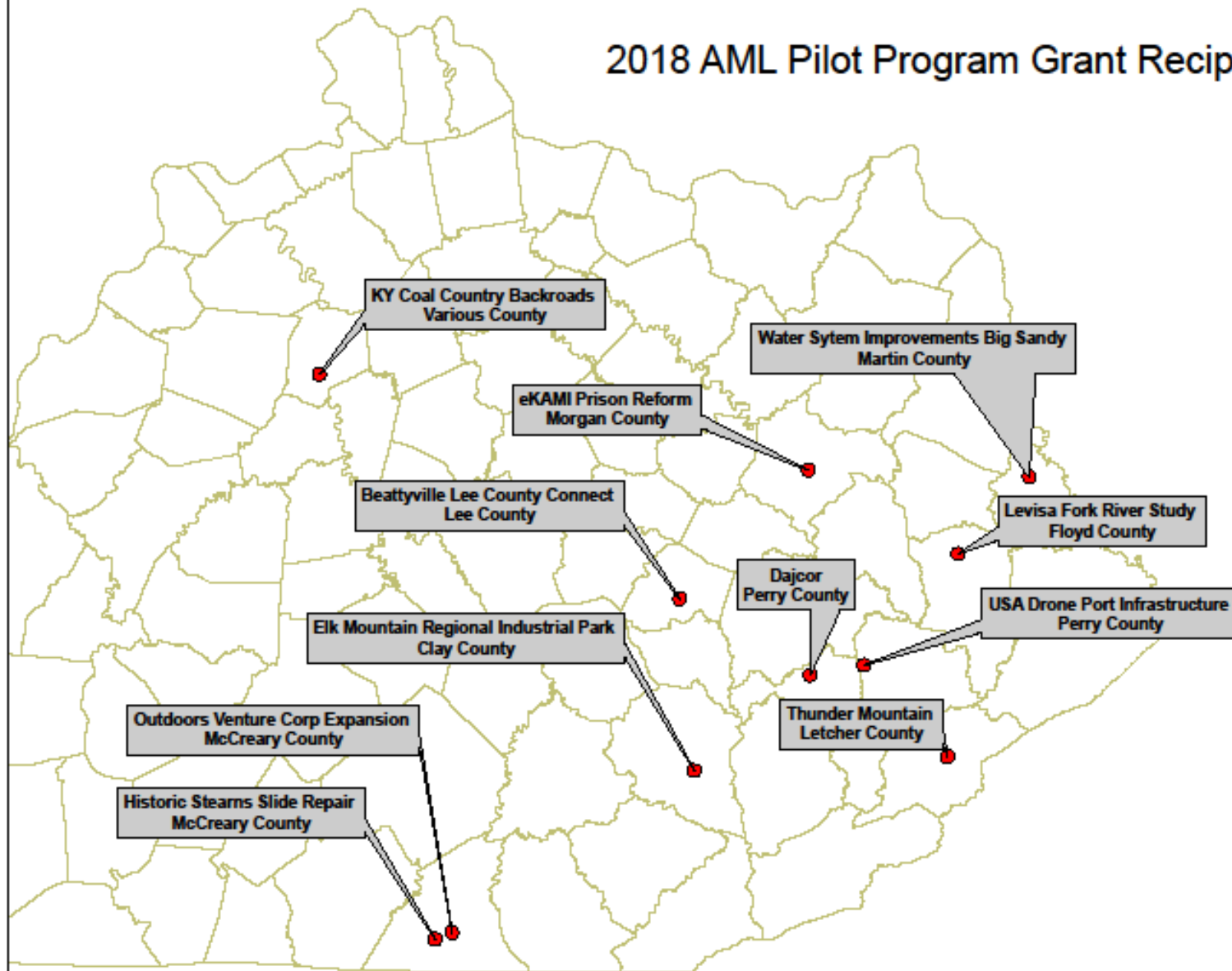
## East-park Industrial Site, future home of Braidy Industries



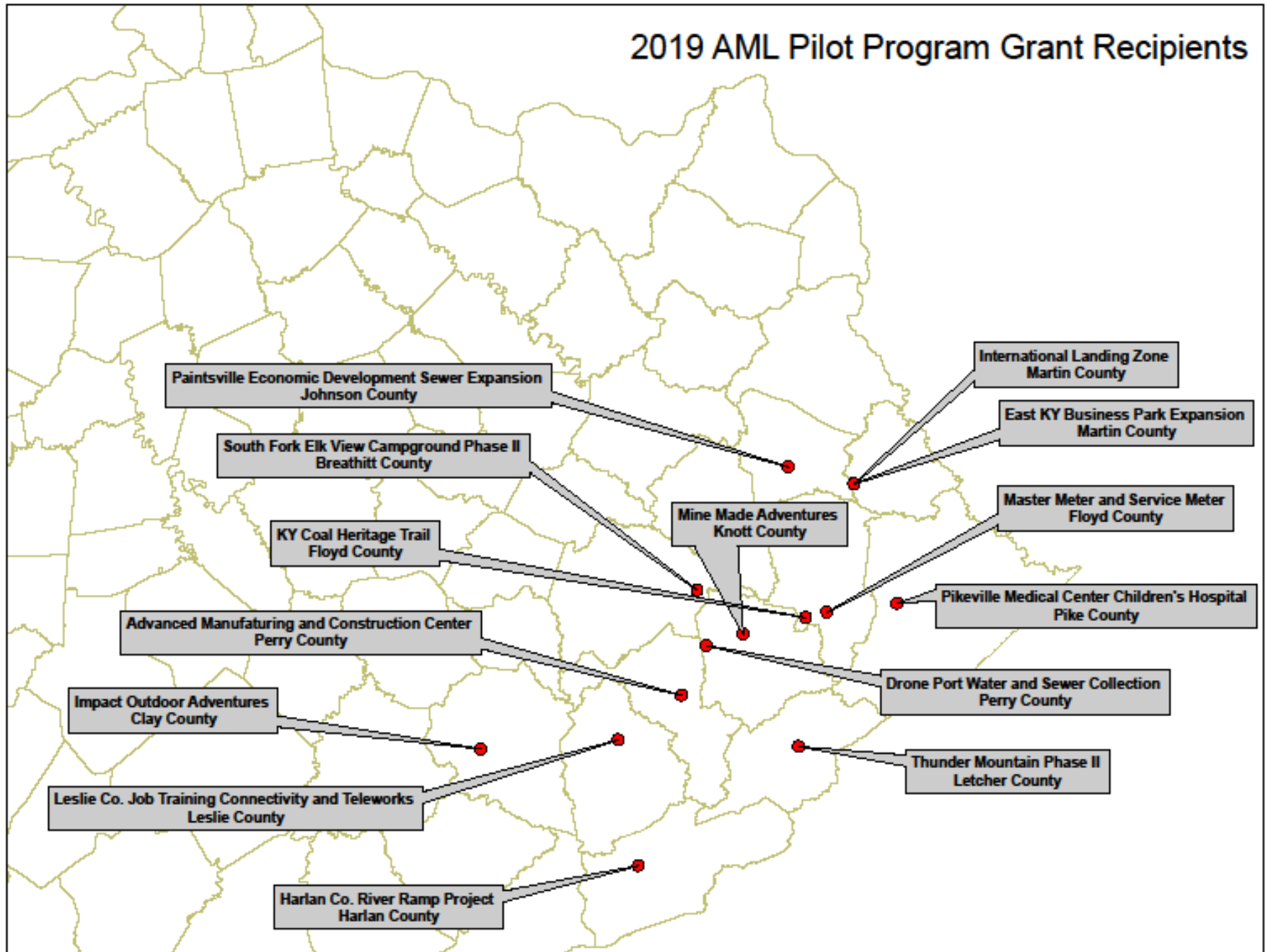
## 2017 AML Pilot Program Grant Recipients



## 2018 AML Pilot Program Grant Recipients



## 2019 AML Pilot Program Grant Recipients



AML is in need of  
Contractors for both AML  
Projects and Bond  
Forfeiture Projects.

## *What is the Division of Abandoned Mine Lands?*

The Division of Abandoned Mine Lands (AML) is an agency within the Department for Natural Resources that operates throughout Kentucky's coal producing counties. AML works to remedy issues caused by mining prior to 1982 and permits with forfeited bond money.

### Types of Projects

AML typically has four classifications of project sites for bidding: AML, Bond Forfeiture, AMD, and Small Purchase Projects.

- **AML Projects** are generally measures alleviating issues caused by pre1982 mining. These may include, but not limited to, slide repair, portal closures, retaining wall construction, excavation, drainage measures, demolition of mining structures, and refuse fire suppression.
- **Bond Forfeiture Projects** include some of the same construction work as AML but are funded using the forfeited bond money from coal mining permit to reclaim the site.
- **AMD Projects** are designed to abate acid mine drainage. These may include installation and maintenance of water treatment structures.
- **Small Purchase Projects** can fall into any of the aforementioned classifications but on a smaller scale (less than \$40,000) and do not require a bond.



## Kentucky Division of Abandoned Mine Lands Regional Offices

### Frankfort-Main Office

300 Sower Blvd, 2nd Floor  
Frankfort, KY 40601  
Phone: 502-564-2141  
Fax: 502-564-4245

### Madisonville Office

State Office Building  
625 Hospital Drive  
Madisonville, KY 42431  
Phone: 270-824-7634  
Counties Served: Breckinridge, Butler, Caldwell, Christian, Crittenden, Daviess, Hancock, Hart, Henderson, Hopkins, Logan, McLean, Muhlenberg, Ohio, Todd, Union, Webster

### Prestonsburg Office

3140 South Lake Drive, Suite 6  
Prestonsburg, KY 41653  
Phone: 606-889-1741  
Counties Served: Boyd, Carter, Elliott, Floyd, Greenup, Johnson, Lawrence, Magoffin, Martin, Menifee, Morgan, Pike

### London Office

3rd Floor State Office Bldg.  
85 State Police Road  
London, KY 40741  
Phone: 606-330-2085  
Counties Served: Bell, Clay, Clinton, Estill, Jackson, Knox, Laurel, Lee, McCreary, Owsley, Pulaski, Rockcastle, Wayne, Whitley, Wolfe

### Hazard Office

Hal Rogers Center  
101 Bulldog Lane, Suite 103  
Hazard, KY 41701  
Phone: 606-487-1110  
Counties Served: Breathitt, Harlan, Knott, Leslie, Letcher, Perry



## KENTUCKY DIVISION OF ABANDONED MINE LANDS



## Contractor Information