

# Updates at Carlson Software

You've been busy so have we!



**Sponsored by**  
*UK Department of Mining Engineering*  
*KSPE/Professional Engineers in Mining*

**Co-Sponsor**  
*Kentucky Coal Association*

# Things we have been working on

- Hardware
- Renishaw Acquisition
- Carlson Photo Capture
- Slope Stability Monitoring System
- Data Collection
- Machine Control
- Office Software
- Training & Support

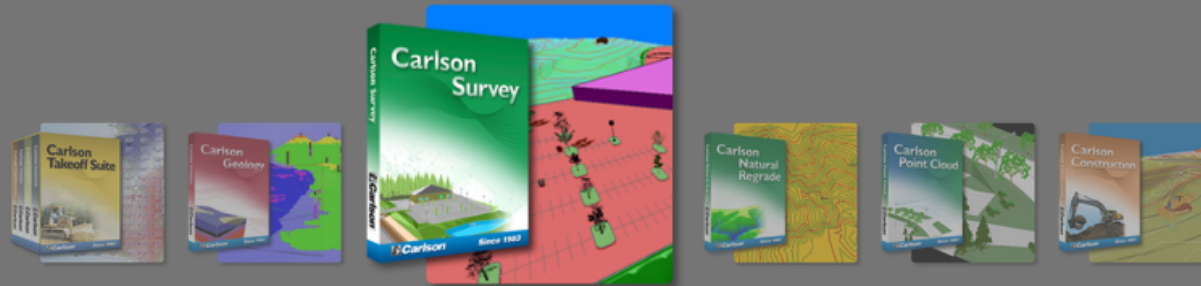


How's Carlson Software doing?

- 2017 was our best year
- Acquired part of Renishaw
- Up to 140 employees
- Added employees in India, Australia, England, Canada, and the US
- Obtained a military contract
- Expanded product offerings



## Carlson Is All About Getting The Job Done



Survey Office: Dynamic tools for COGO, Adjustments, Points, Deeds, Contouring and more [Continue ->](#)

### OFFICE PRODUCTS

[Carlson iCAD](#)  
[Carlson Civil](#)  
[Carlson Hydrology](#)  
[Carlson GIS](#)  
[Carlson Survey](#)  
[Civil Suite](#)  
[P3D Topo](#)  
[P3D Hydro](#)  
[P3D Drill and Blast](#)  
[Carlson Connect](#)  
[SurveyGNSS](#)  
[Carlson SurvNET](#)  
[Carlson Point Cloud](#)  
[Carlson Underground Mining](#)  
[Carlson Surface Mining](#)  
[Carlson Geology](#)  
[Carlson Takeoff](#)  
[Carlson Construction](#)  
[Carlson GeoTech](#)  
[Carlson Trench](#)  
[Carlson CADnet](#)  
[Simplicity 'Sight' Survey](#)  
[CSI Office](#)  
[Carlson AgStar](#)  
[Carlson 3DX Viewer](#)  
[IntelliCAD Engine](#)

### DATA COLLECTION

[SurvCE](#)  
[SurvPC](#)  
[Grade Supervisor](#)  
[Carlson Field](#)  
[CSI Mobile](#)

### OFFICE SOLUTIONS

**Find what you need**  
[Civil Design](#)  
[Hydrology](#)  
[GIS in the Office](#)  
[Takeoff / Data Prep](#)  
[Survey Office](#)  
[Post-Processing](#)  
[Point Cloud](#)  
[Mining Design & Planning](#)  
[Reclamation](#)  
[GIS Mapping](#)  
[Accident Reconstruction](#)  
[Agricultural Software](#)  
[3D Culvert Design](#)

### CARLSON SOFTWARE

**Training, Contacts & More**  
[Carlson's Top 10](#)  
[Training](#)  
[Contact Info](#)  
[News](#)  
[30-Day Demos](#)  
[Informational Videos](#)

### LEARN MORE

Download our LTD to  
Carlson Migration Guide



# Changes that have happened in the last 18 months at Carlson Software

- BRX6 GPS
- Combined Robotic/GPS Surveying method  
– Hybrid Surveying
- GPS Equipment Guidance on a Block Model
- Partnership with a Photogrammetry Company – Carlson Photo Capture
- Acquisition of a portion of Renishaw
- US Army Surveying Data Collector
- Carlson Command Machine Control Software
- Integration of Surface Mining Cut/Haul Cycle Analysis/Fill
- P3D Hydro/Topo/Blast Design
- Point Cloud/Drone Data
- Open Pit Optimization
- We are up to 418 Youtube Training Videos (all free)
- We just completed our strongest year!
- Added Carlson Photo Capture
- Adding Slope Stability monitoring program

# Hardware



# Surveying hardware, software and methods are changing

# Hardware



Total Station – CR2+ and CR5+

GPS – BRx6

Tablet – RT3

Carlson Surveyor 2

Carlson Mini2 Data Collector



# New GPS Receiver and ways to use it!

## KEY FEATURES

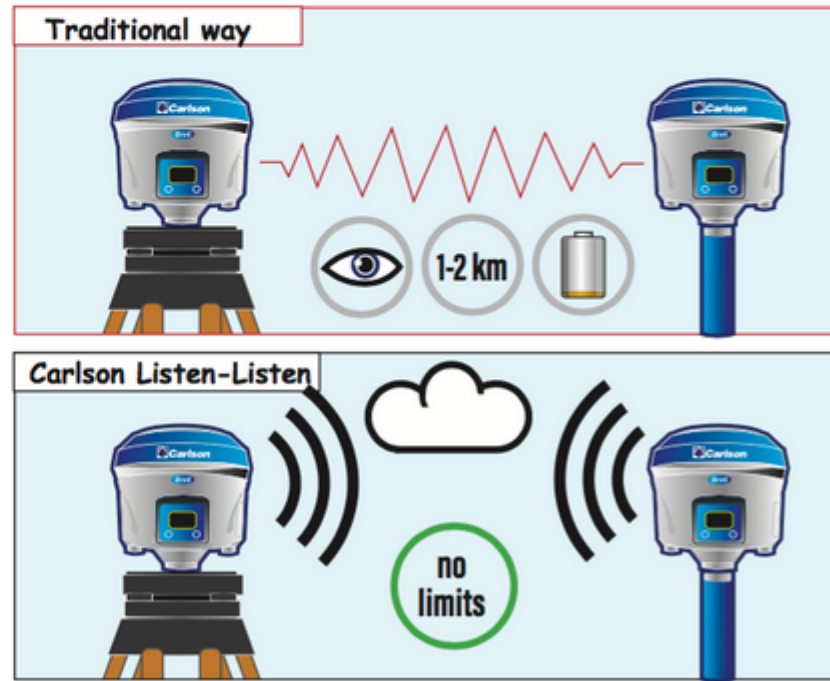
- Athena™ GNSS RTK engine
- Integrated UHF radio
- Integrated GSM Modem
- Base or Rover functionality
- Tilt Sensor
- Integrated Bluetooth & Wi-Fi
- 4 GB Internal memory + microSD card to 64 GB
- IP67 Enclosure



## Carlson Listen-Listen

### About Carlson Listen-Listen and Carlson's RTK Network:

- Carlson Listen-Listen and Carlson RTK Network are unique cloud based low latency services
- They are available to Carlson SurvCE/PC customers using Carlson's BRx6 GNSS receiver as a base station
- They are hosted through Amazon Web Services for unlimited processing power, speed and bandwidth
- The system eliminates base line length restrictions encountered when using UHF radios
- Carlson Listen-Listen supports single base with multiple simultaneous rover connections
- Carlson RTK Network processing is optimized to compensate for inter-frequency biases when using GLONASS



# Robotic Total Station on Steroids





# Renishaw Acquisition in 2017



# Renishaw Acquisition

Acquired a hardware manufacturer UK-Based York, England

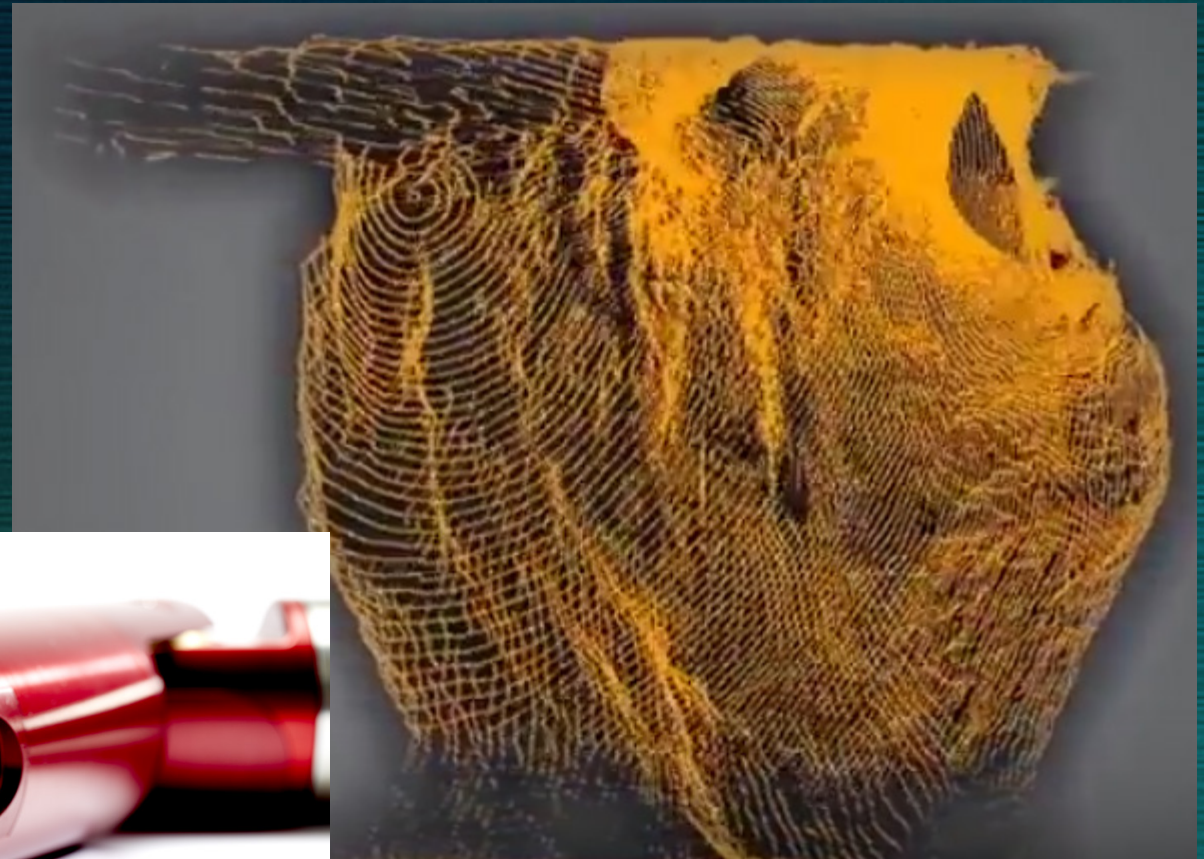
## Mining Hardware, Marine, and Modules Products

- [Carlson Void Scanner](#)
- [Carlson Cabled Boretrak](#)
- [Carlson Rodded Boretrak](#)
- [Carlson C-ALS](#)
- [Carlson Quarryman Pro](#)
- [Carlson ILM – Industrial Laser Modules](#)
- [Carlson Merlin](#)





# Carlson LMD CALS Void Scanner

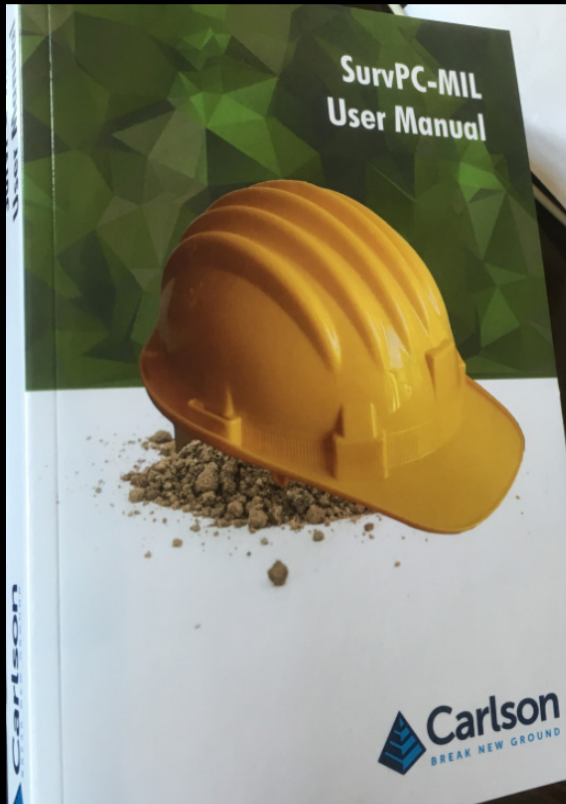




# Data Collection

# We now supply the Army with surveying data collection software for their surveying needs

## SurvPC - MIL



- Sorry I can't go into any additional details. It's classified.....



There is a new Web Site dedicated to Data Collection <http://survce.com/home>

Developed GNSS (static GPS processing software)

Upgraded SurvCE

Upgraded SurvPC

Upgraded Field

Upgraded CSI

Grade Supervisor

Fast Survey

Listen – Listen

Carlson X-Port

We will develop software to drive the Renishaw equipment

survce.com/home

**Carlson**  
BREAK NEW GROUND

English

## SurvCE Resource Center

Demo Request

Purchase Features

Version 5

Download Register Release Notes Manual

### Upgrades and Add-ons

**SurvCE Upgrade**  
Upgrade to the latest version of SurvCE

**Fast Survey Upgrade**  
Upgrade to the latest version of Fast Survey



# Machine Control

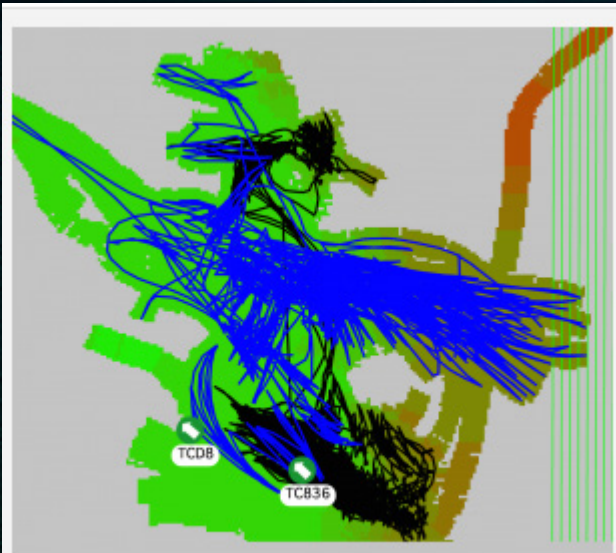


# New software developments for machine control

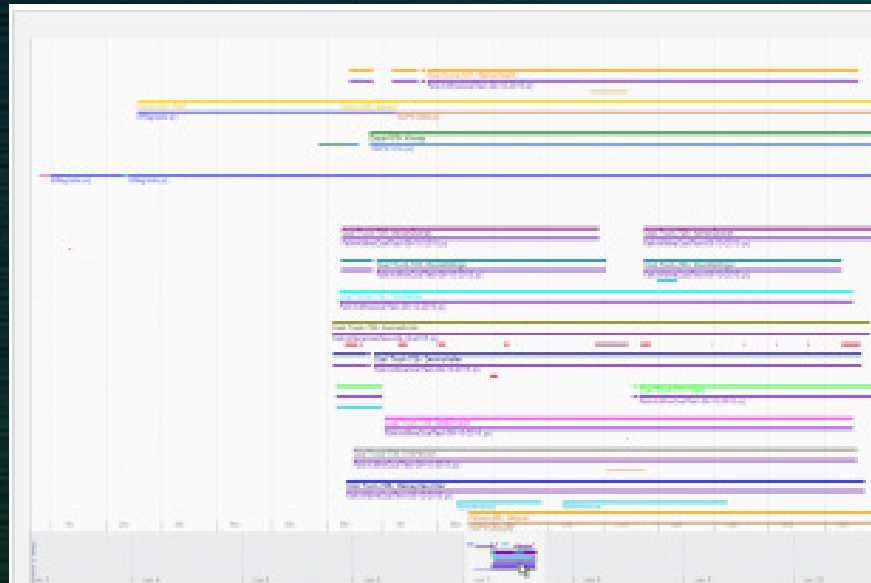
Carlson Command (Subscription –based)  
Drill Guidance with Blasthole layout  
Blast Commander (coming in 2019)  
Machine control on a block model



# Command Features



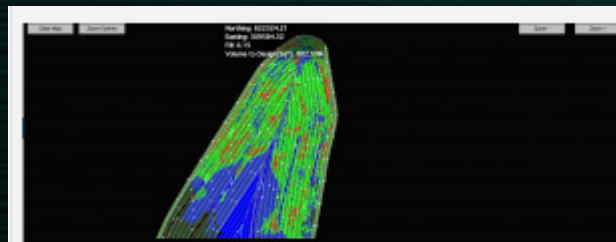
Rover Position Trace



Timeline Report



Real Time Dashboard



Cut Fill Color Map

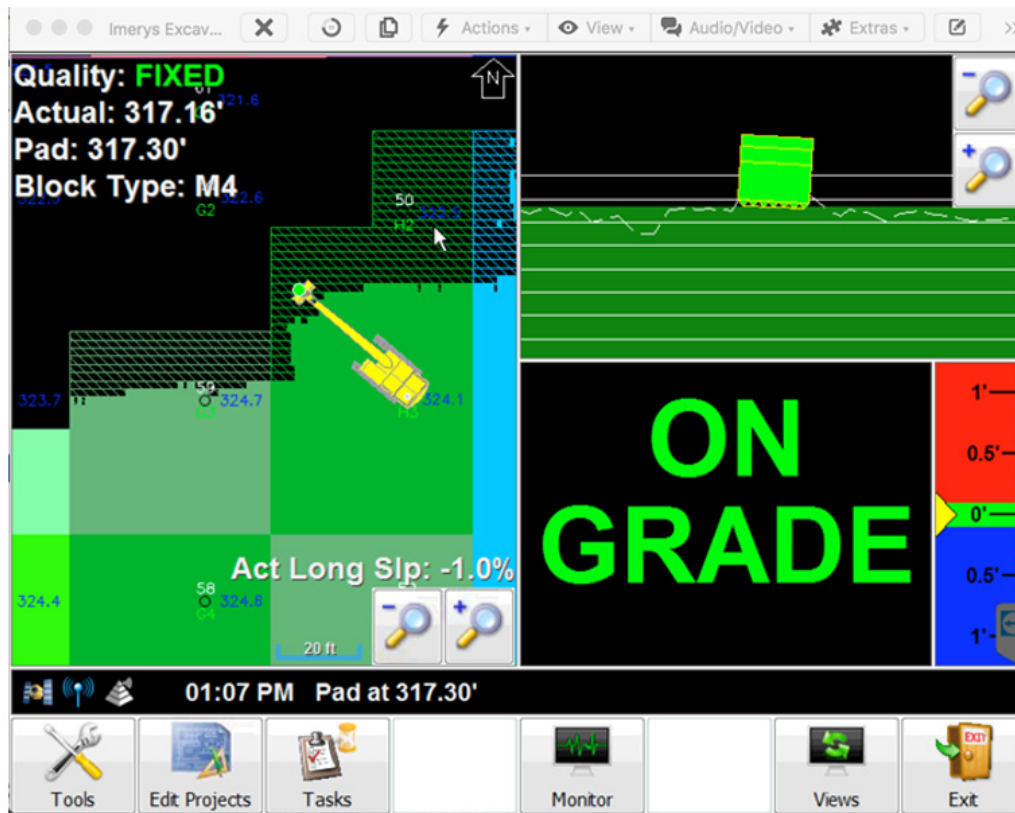


Time Reporting



# GPS Machine Guidance on a Block Model

## Deployment – What the Operator sees



## Deployment – What the Office sees



# Carlson MC-8

Carlson Machine Control's Newest Control Box






# Office Software



# IntelliCAD 9.0 has arrived


https://www.youtube.com/user/IntelliCADOfficial

Search



**IntelliCAD**  
Technology Consortium

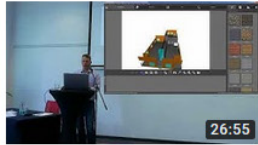





Real. Affordable. Cooperative. CAD Platform.  
www.intellicad.org

 **IntelliCAD Official**  
57 subscribers


**SUBSCRIBE 57**

HOME

Uploads **PLAY ALL**

 26:55	 25:18	 44:19	 42:44	 15:59	 16:46
<b>ITC BIM Special Interest Group</b> No views • 22 hours ago	<b>IntelliCAD 9.0</b> 6 views • 2 days ago	<b>UI Overview</b> 3 views • 2 days ago	<b>ARTISAN Rendering</b> 3 views • 2 days ago	<b>Internalization, Localization and Branding</b> 20 views • 1 week ago	<b>Software Configuration and Build Management</b> 8 views • 1 week ago

Created playlists

 **IntelliCAD World Conference 2018**  
Updated 2 days ago  
IntelliCAD at 20 • 26:05  
IntelliCAD Mobile 1.2 • 9:23  
[VIEW FULL PLAYLIST \(13 VIDEOS\)](#)

It's free with  
Carlson Software





**Carlson**

BREAK NEW GROUND

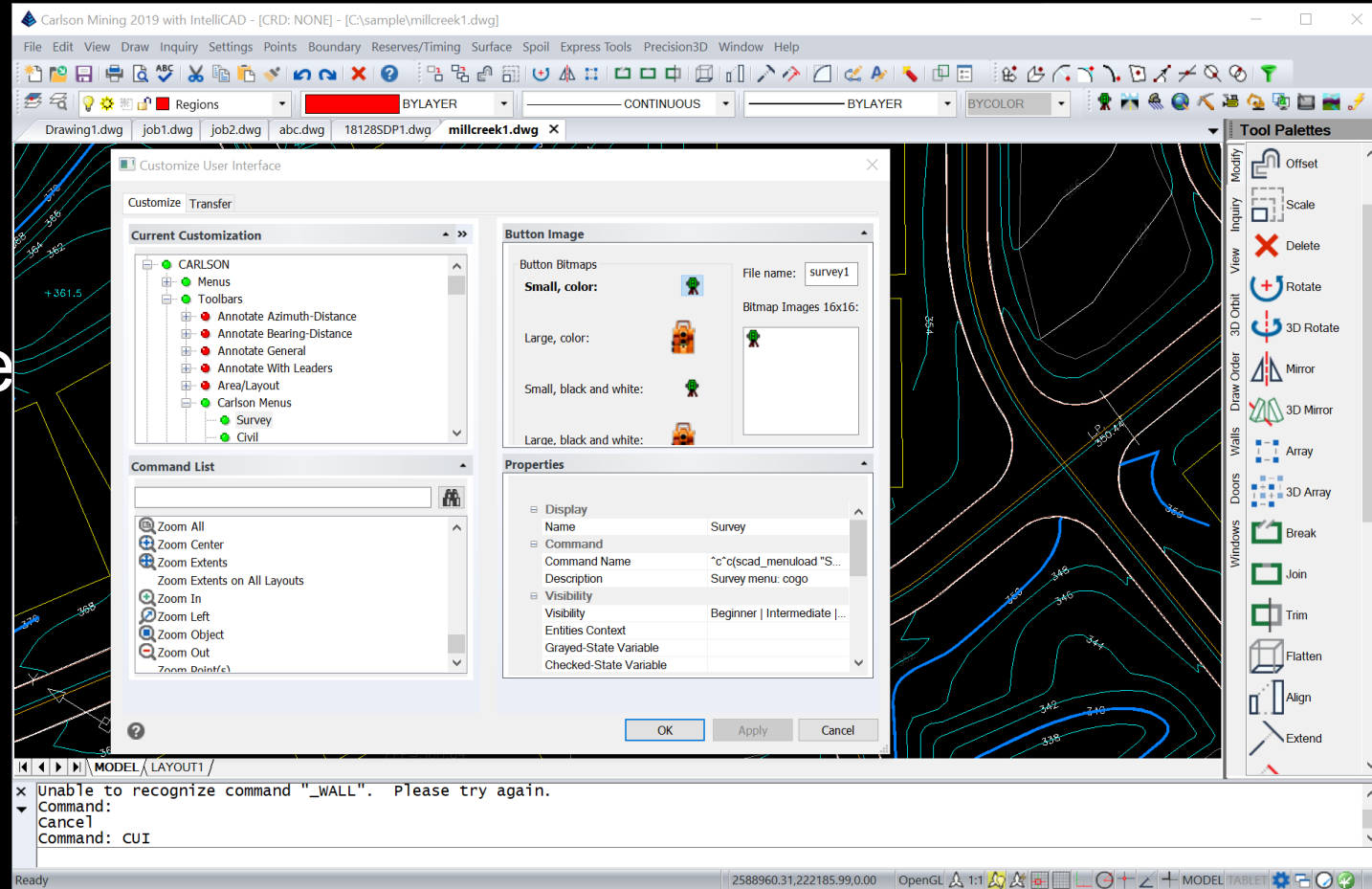
**2019**

- **AutoCAD  
2019-2010**
- **IntelliCAD 9.0  
for Win64**
- **200+ New  
Features**



# Carlson 2019 with IntelliCAD 9.0

- User-Interface:
  - Customize User Interface
  - Tool Palettes
- New commands: 3D Solids, Te Explode to Polylines, CLine, Express Tools
- 2018 .DWG File
- Work directly with .DGN drawings
- IntelliCAD YouTube channel





# Ultra High Resolution Display

- Improved support for font and image scaling for 4k monitors

Coordinate Data Sheet: C:\TEMP\LEGL-D-LOTS.crd

File Edit Search Group Help

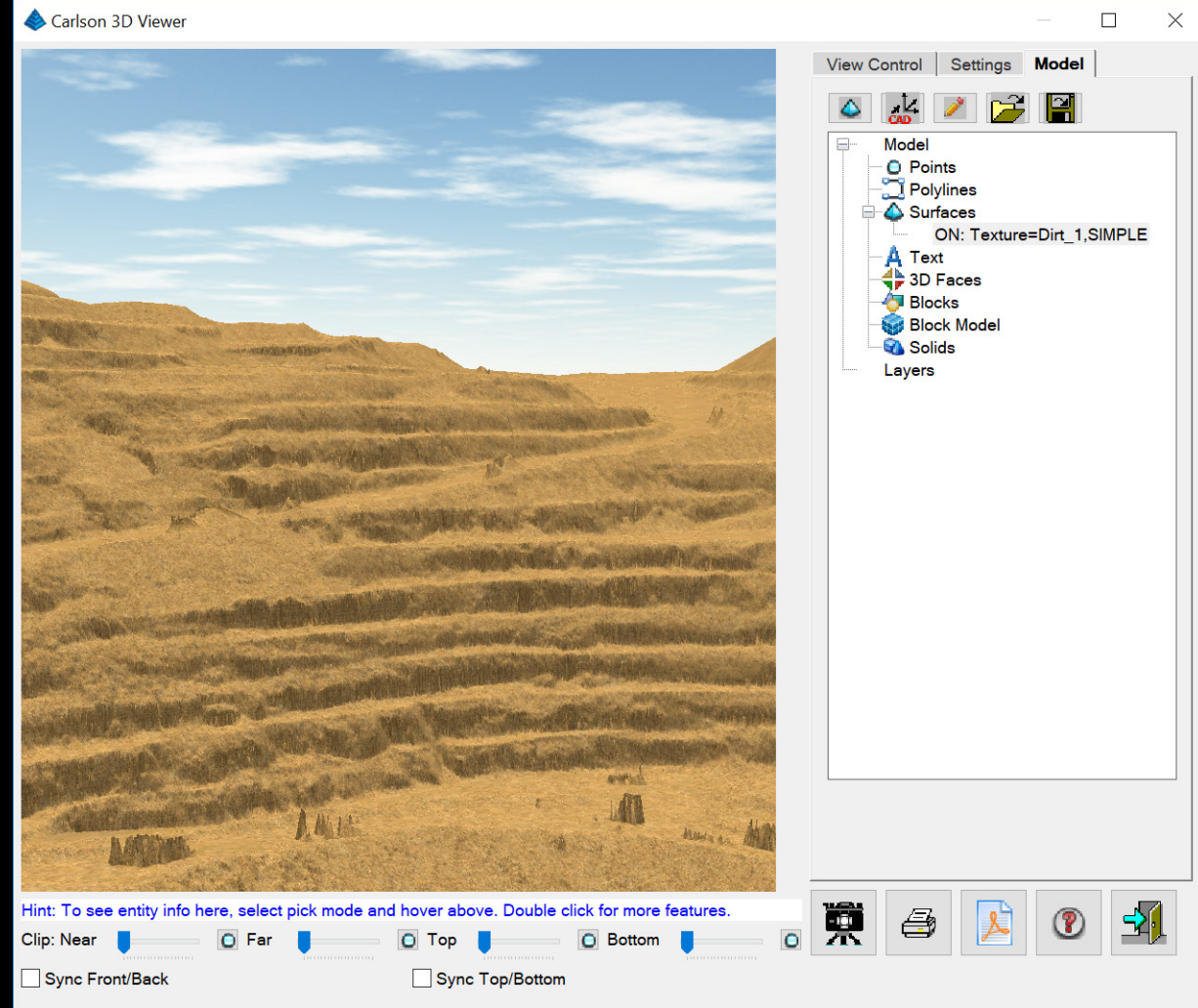
	Point#	Northing	Easting	Elevation	Description
1	1	15841346.146921	2278674.337612	.000000	LOT PIN
2	2	15841342.046796	2278535.461267	.000000	LOT PIN
3	3	15841241.817560	2278555.927365	.000000	LOT PIN
4	4	15841242.556032	2278583.382421	.000000	LOT PIN
5	5	15841009.640271	2278589.647268	.000000	LOT PIN
6	6	15841232.995691	2278655.989989	.000000	LOT PIN
7	7	15841226.380004	2278678.262960	.000000	LOT PIN
8	8	15841348.507791	2278754.303191	.000000	LOT PIN
9	9	15841223.377329	2278688.372040	.000000	LOT PIN
10	10	15841958.628860	2278906.762024	.000000	LOT PIN
11	11	15841206.001698	2278758.973813	.000000	LOT PIN
12	12	15841350.868660	2278834.268770	.000000	LOT PIN
13	13	15841194.593454	2278839.390673	.000000	LOT PIN
14	14	15841353.229530	2278914.234349	.000000	LOT PIN
15	15	15841191.735095	2278919.527312	.000000	LOT PIN
16	16	15841355.590399	2278994.199928	.000000	LOT PIN
17	17	15841192.040482	2278931.886879	.000000	LOT PIN

Point 1 Notes

1	
2	
3	
4	
5	
6	

# 3D Viewers

- Breakthrough performance improvements
- Improved backgrounds
- New features:
  - Set textures by surface slope
  - Color by normals
  - Display surface coordinates and slope
  - Control line thickness
  - 3D Model Library





# Survey 2019



Authorized  
**IntelliCAD**<sup>®</sup>  
Technology Consortium  
Member

**AUTODESK**<sup>®</sup>  
Authorized Developer



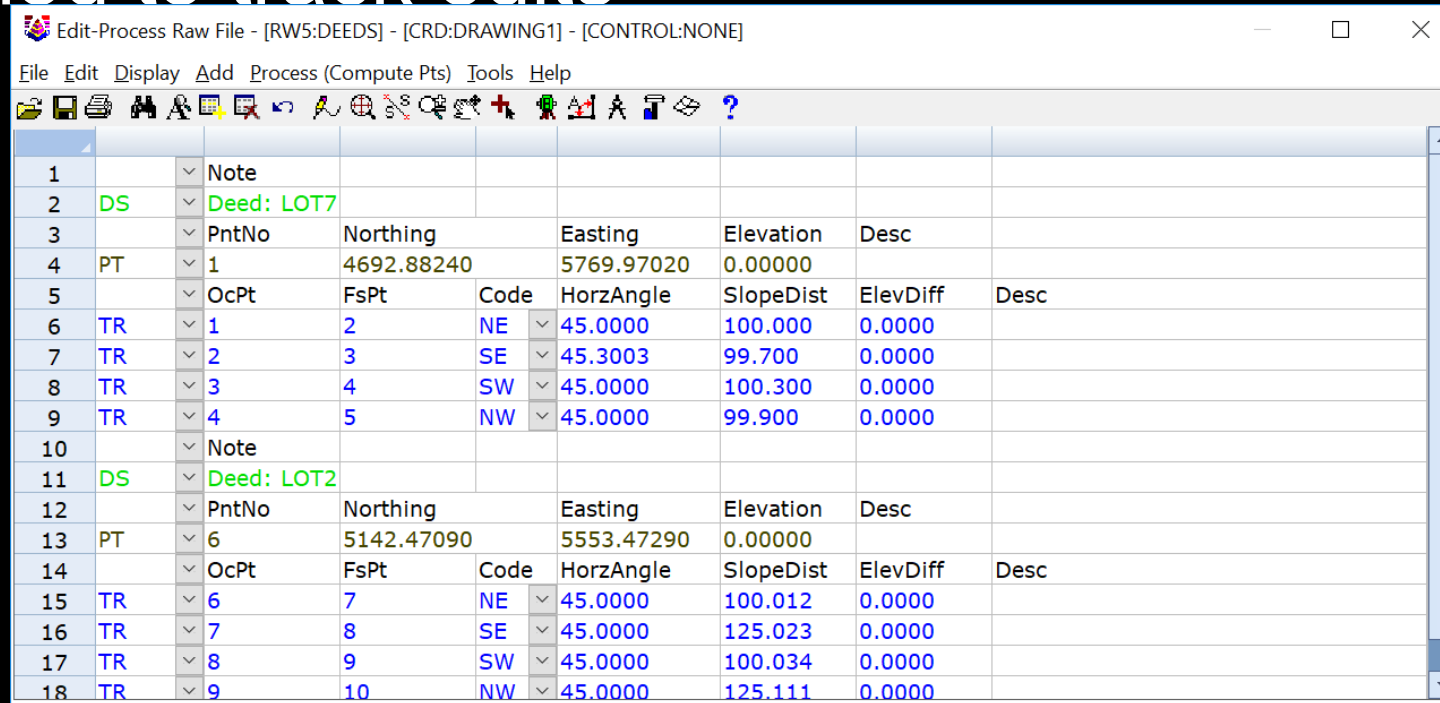
# Carlson

BREAK NEW GROUND



# Edit-Process Raw Data

- Added support for processing SurvCE tilt records
- Added scale values function
- Added method to track edits



Edit-Process Raw File - [RW5:DEEDS] - [CRD:DRAWING1] - [CONTROL:NONE]

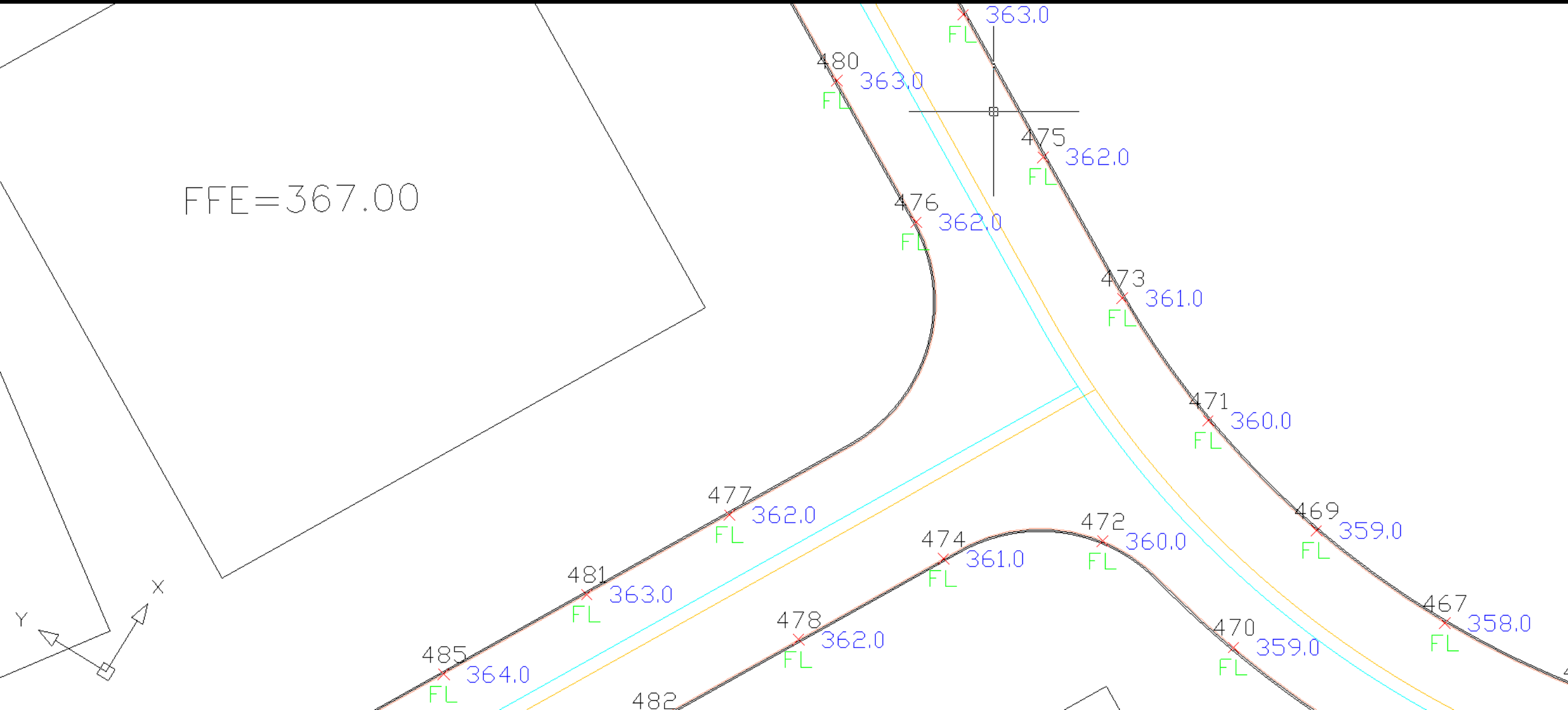
File Edit Display Add Process (Compute Pts) Tools Help

1		▼ Note										
2	DS	▼ Deed: LOT7										
3		▼ PntNo	Northing		Easting	Elevation	Desc					
4	PT	▼ 1	4692.88240		5769.97020	0.00000						
5		▼ OcPt	FsPt	Code	HorzAngle	SlopeDist	ElevDiff	Desc				
6	TR	▼ 1	2	NE	▼ 45.0000	100.000	0.0000					
7	TR	▼ 2	3	SE	▼ 45.3003	99.700	0.0000					
8	TR	▼ 3	4	SW	▼ 45.0000	100.300	0.0000					
9	TR	▼ 4	5	NW	▼ 45.0000	99.900	0.0000					
10		▼ Note										
11	DS	▼ Deed: LOT2										
12		▼ PntNo	Northing		Easting	Elevation	Desc					
13	PT	▼ 6	5142.47090		5553.47290	0.00000						
14		▼ OcPt	FsPt	Code	HorzAngle	SlopeDist	ElevDiff	Desc				
15	TR	▼ 6	7	NE	▼ 45.0000	100.012	0.0000					
16	TR	▼ 7	8	SE	▼ 45.0000	125.023	0.0000					
17	TR	▼ 8	9	SW	▼ 45.0000	100.034	0.0000					
18	TR	▼ 9	10	NW	▼ 45.0000	125.111	0.0000					



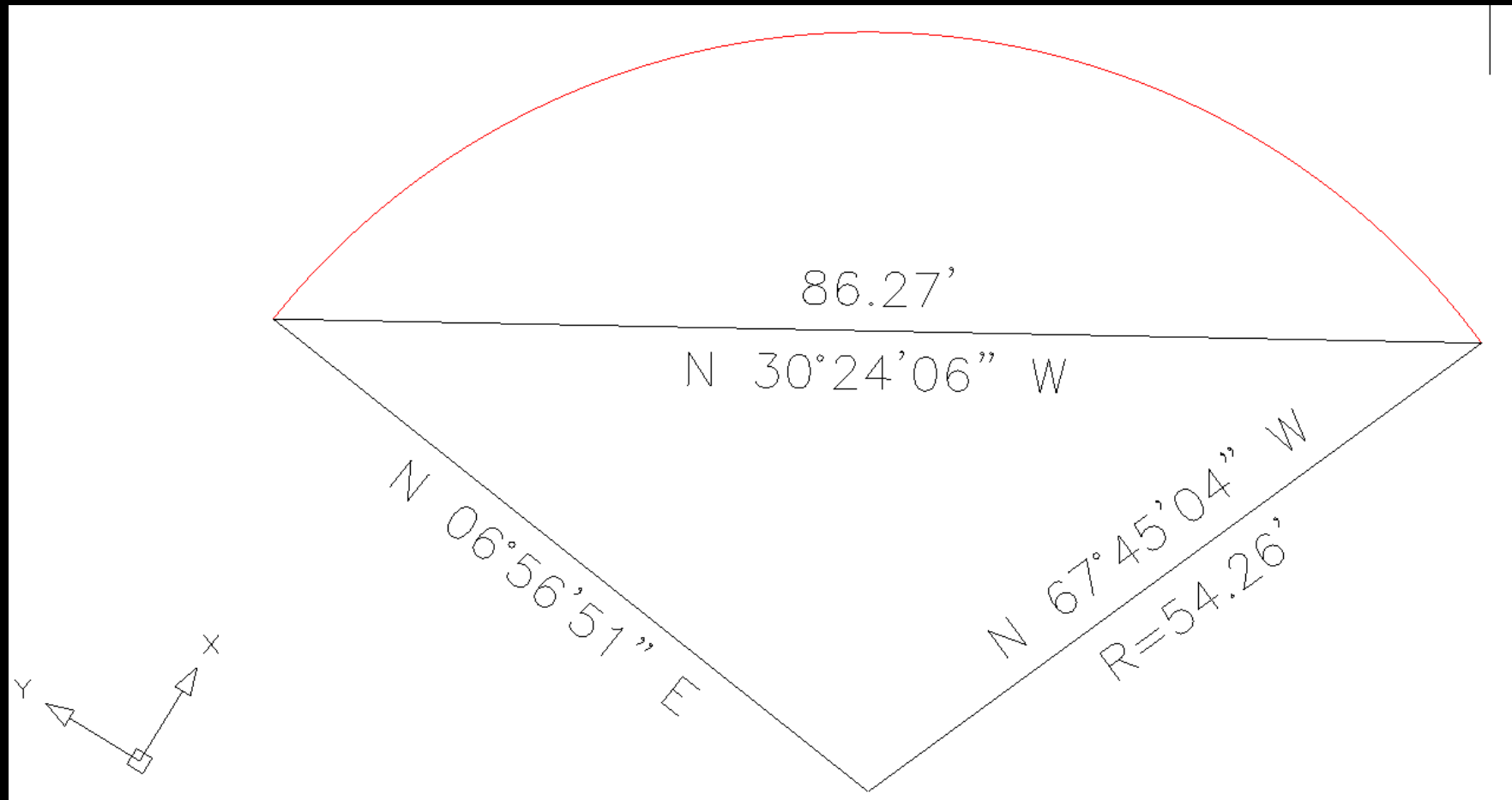
# Elevation Along Entity

- Create points at elevations along 3D polyline



# Arc Dimensions

- Label arc chord and radial lines





# Civil 2019



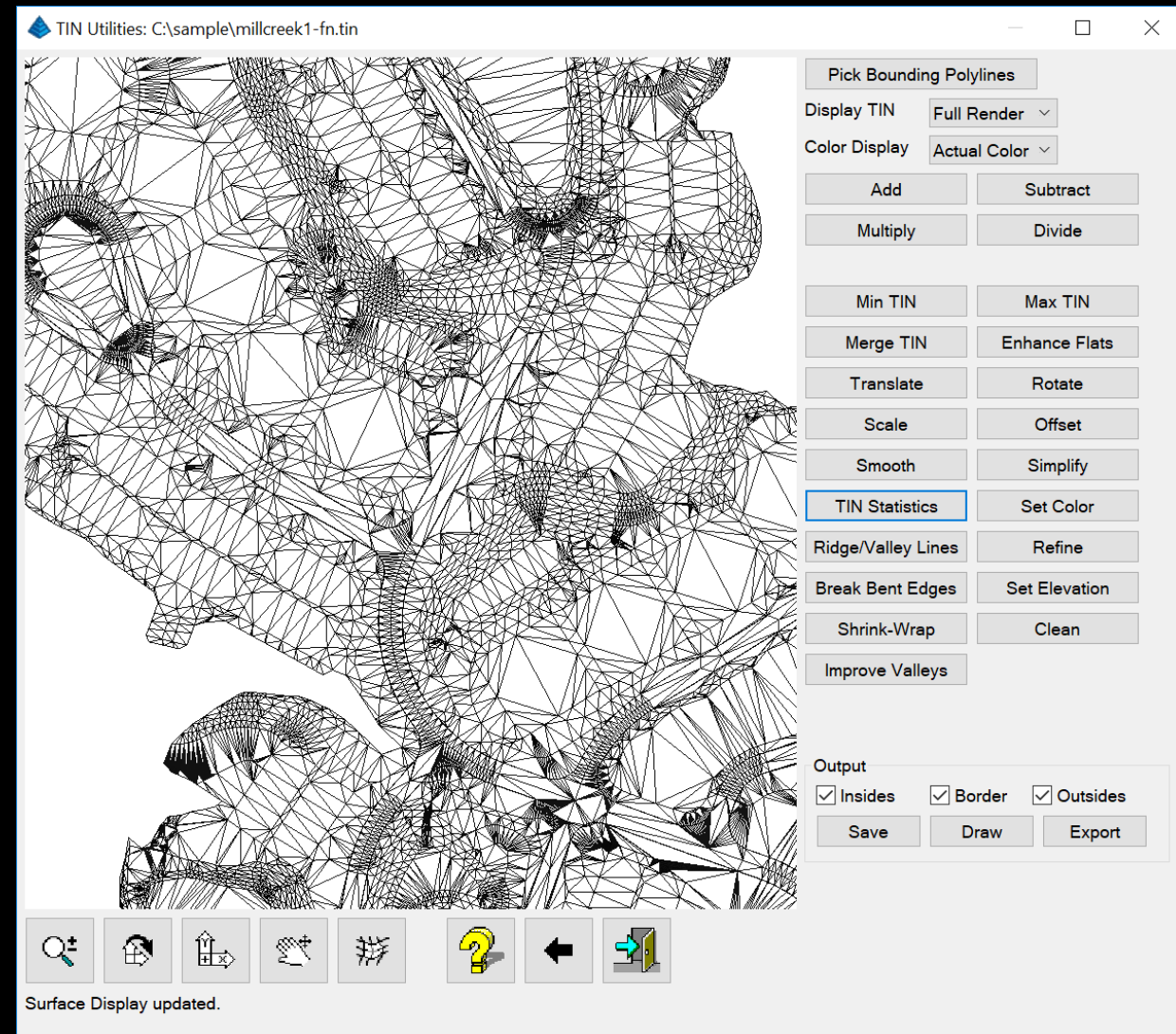
# Carlson

BREAK NEW GROUND



# Triangulation File Utilities

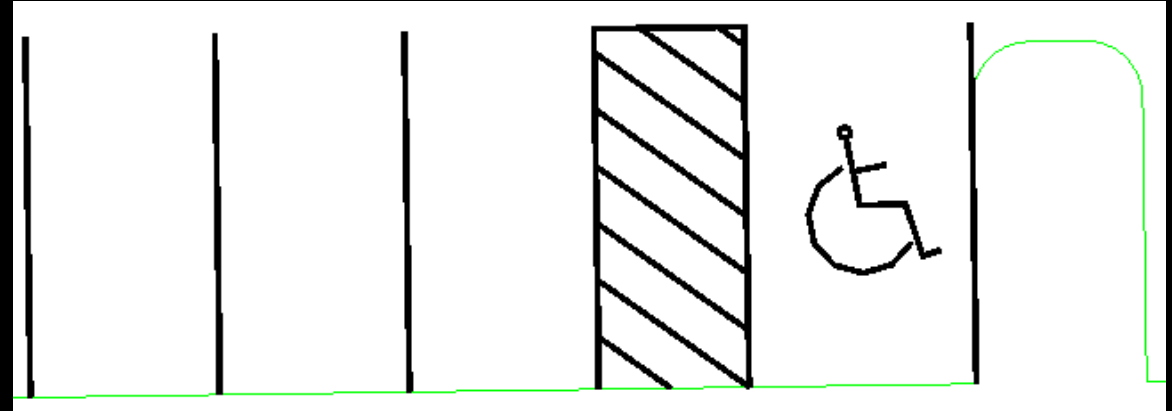
- New Simplify method
- New Smooth method
- New Refine function
- New Clean function
- New Enhance Flats function
- New Improve Valleys function





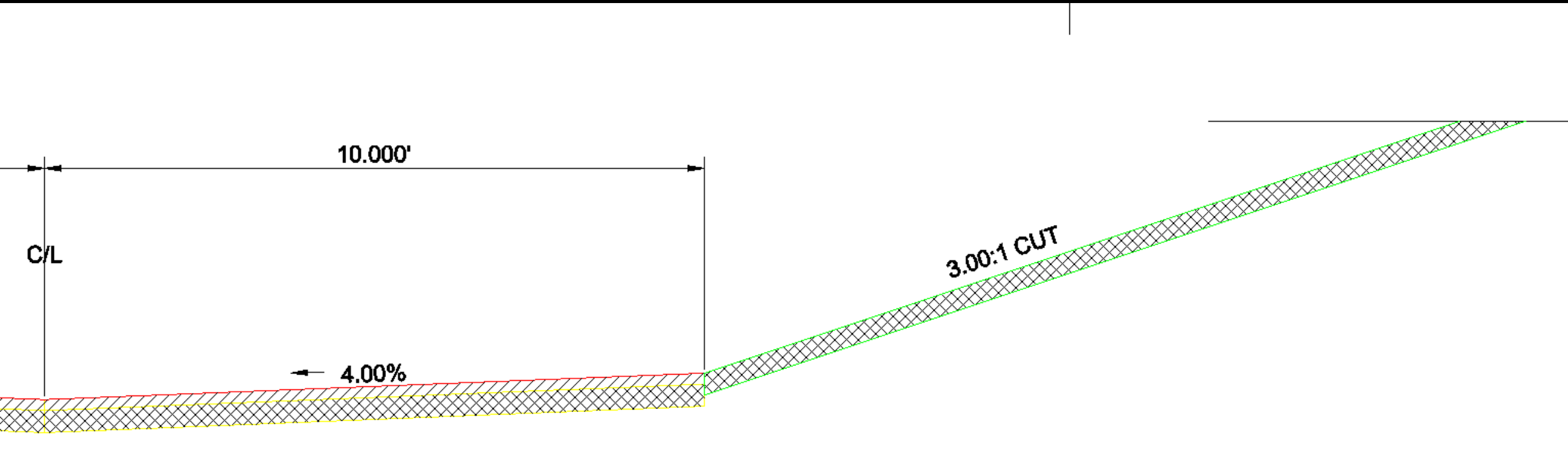
# Parking Lines

- Set Line Width
- Draw Baseline
- Handicap Marker
- Buffer Zone
- Picked up by 3D Viewer



# Design Template

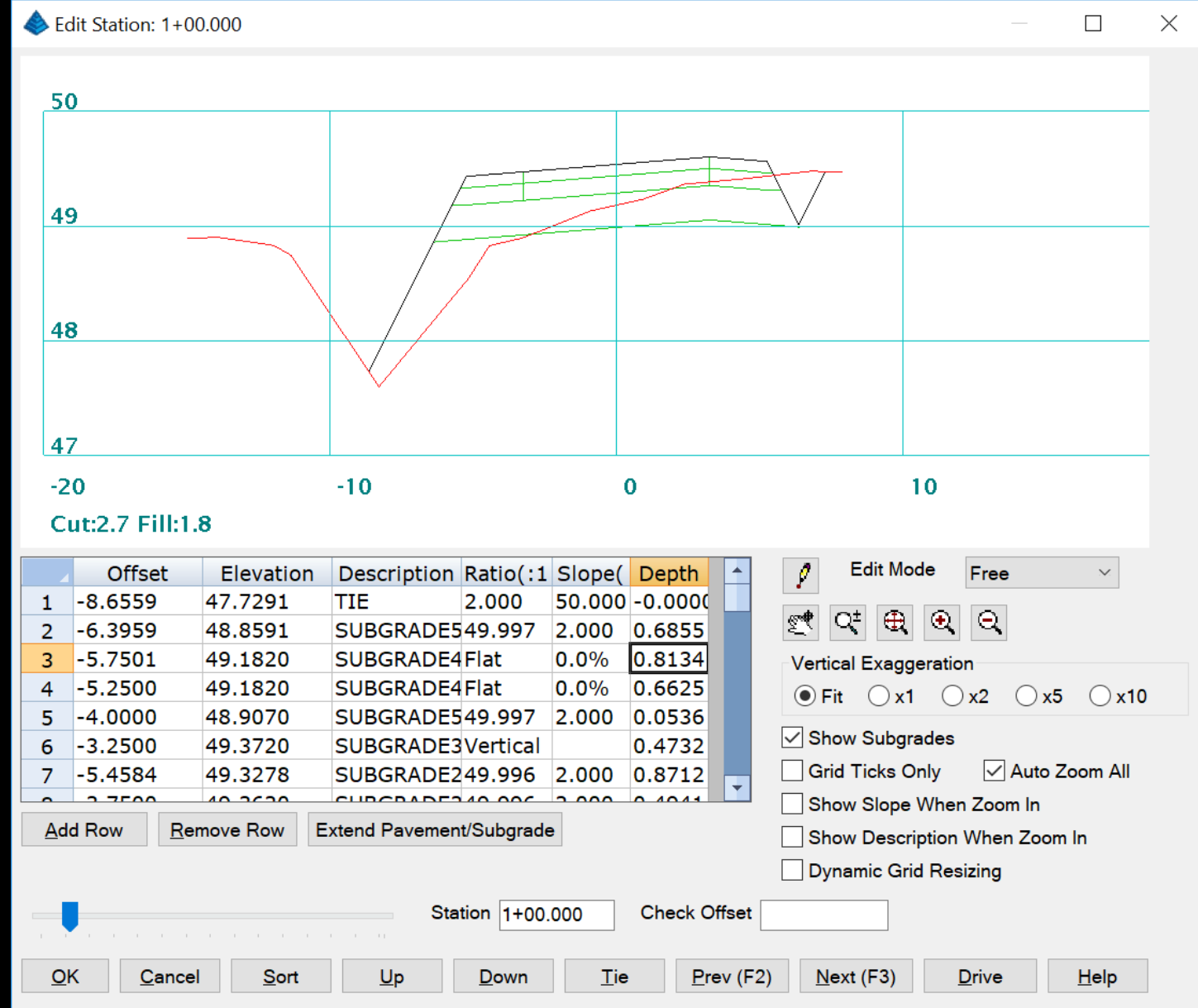
- Subgrades in cut/fill grades





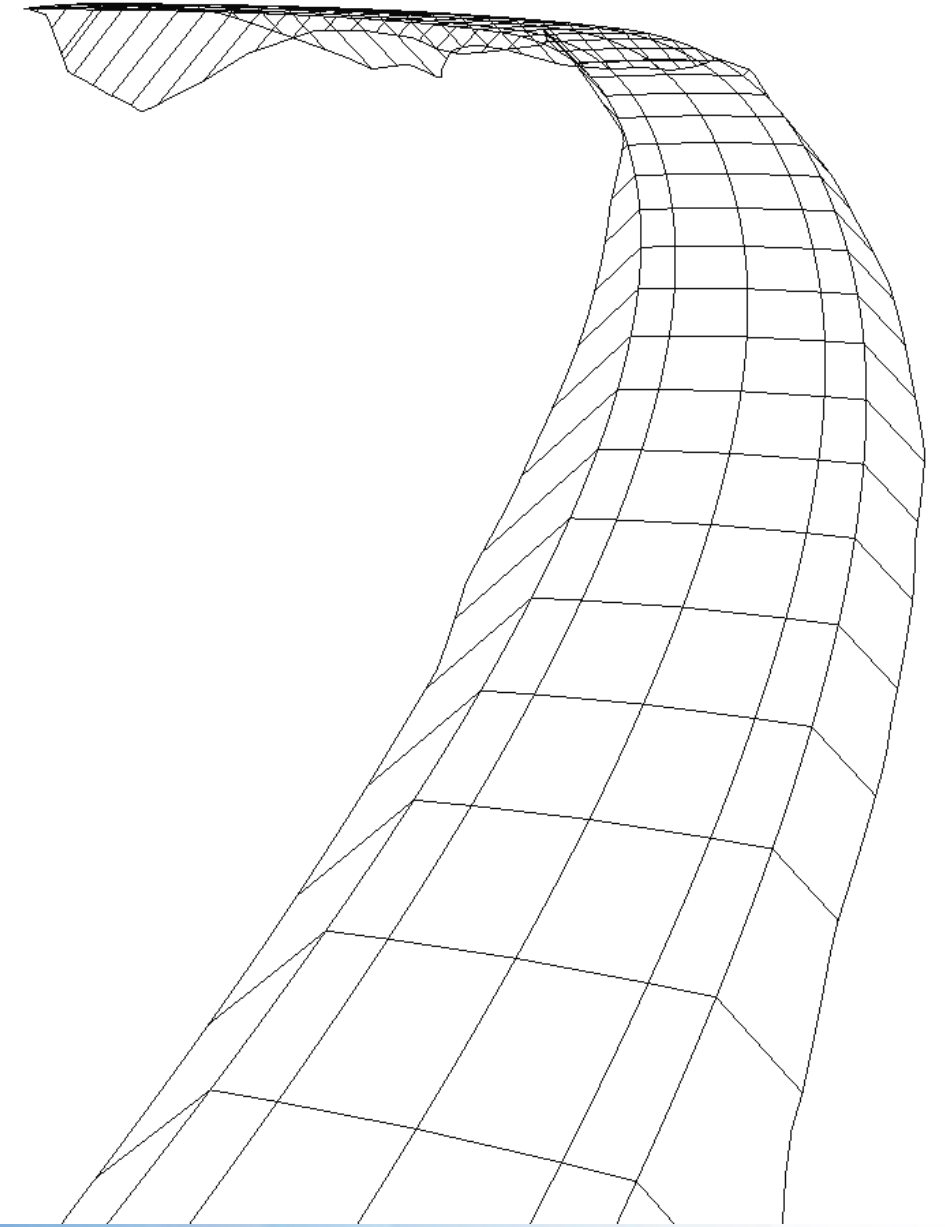
# Input-Edit Section Files

- Depth display
- Edit elevations by depth



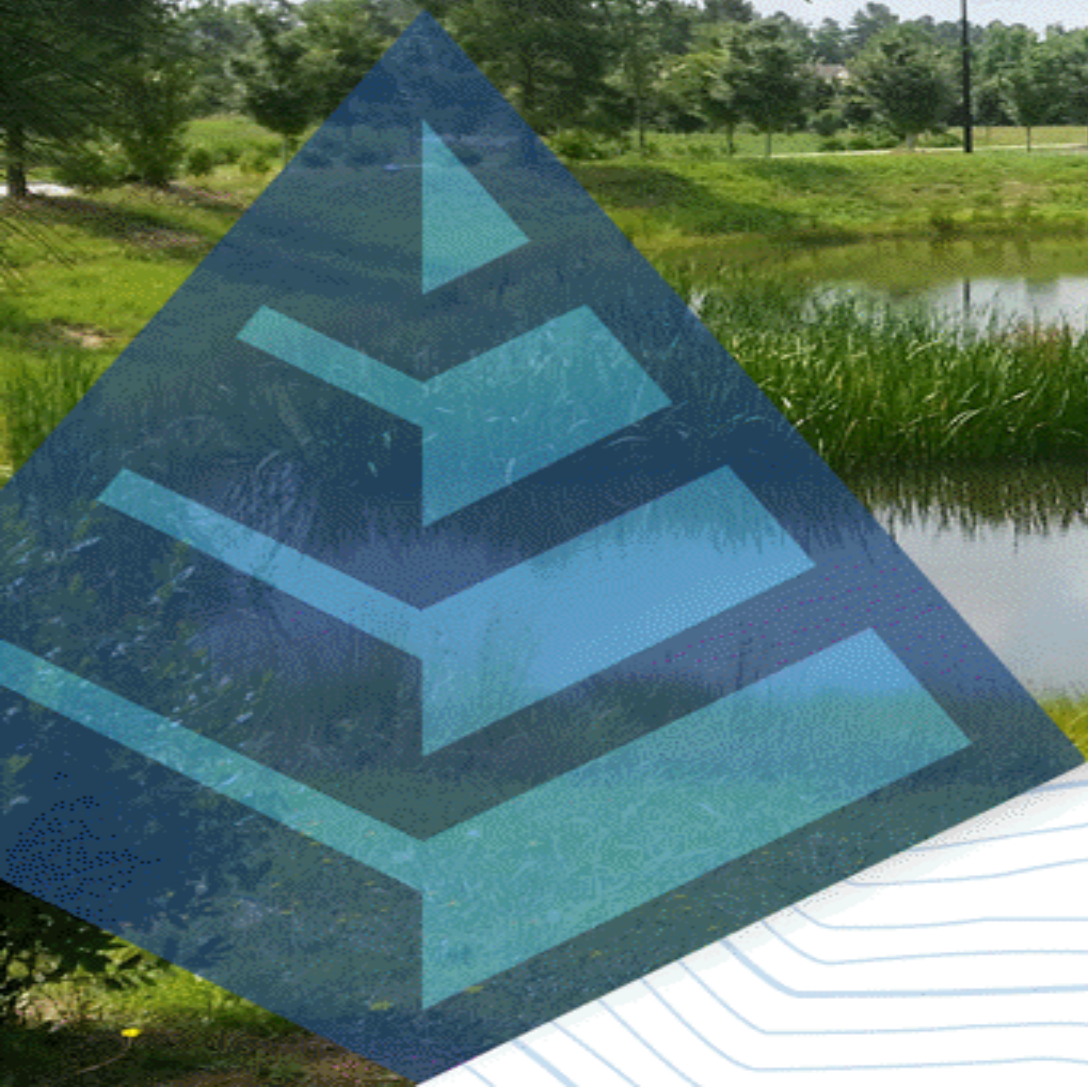
## Process Design Sections

- Option to use small station interval
- Option to use Profile





# Hydrology 2019

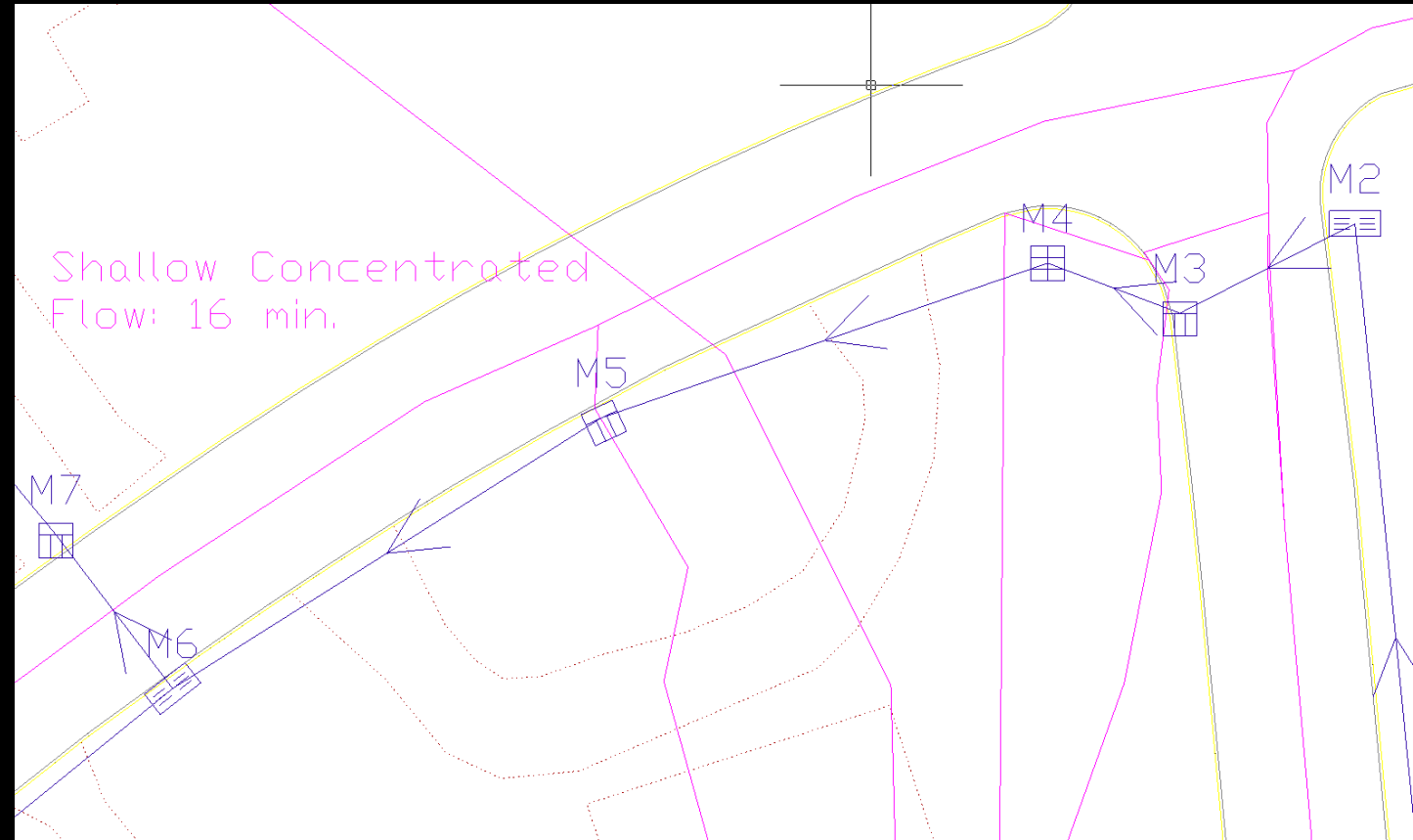


**Carlson**  
BREAK NEW GROUND



# Sewer Network

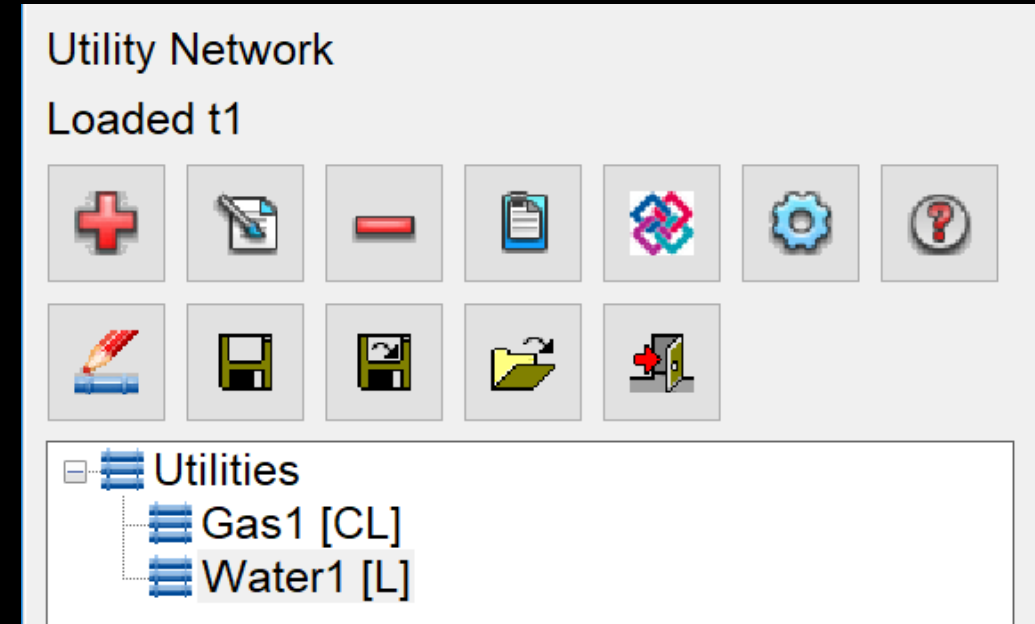
- More Tc methods
- Add tributary method
- Plan view layer names by pipe material and size
- Label pipe crossings in plan view
- Import/Export model to ESRI





# Utility Network

- Draw Profile function with symbols
- Set profile by depth
- Defaults for connection symbols and models
- Plan view label options names



# Pressure Pipe Network

- Pipe, pump, valve, tank and reservoir elements
- Create EPANet project file
- Process using EPANet

Source & Pump



J2

Pipe 01

J3

Pipe 02



Pipe 03



# GIS 2019



Authorized  
**IntelliCAD**<sup>®</sup>  
Technology Consortium  
Member

**AUTODESK**<sup>®</sup>  
Authorized Developer



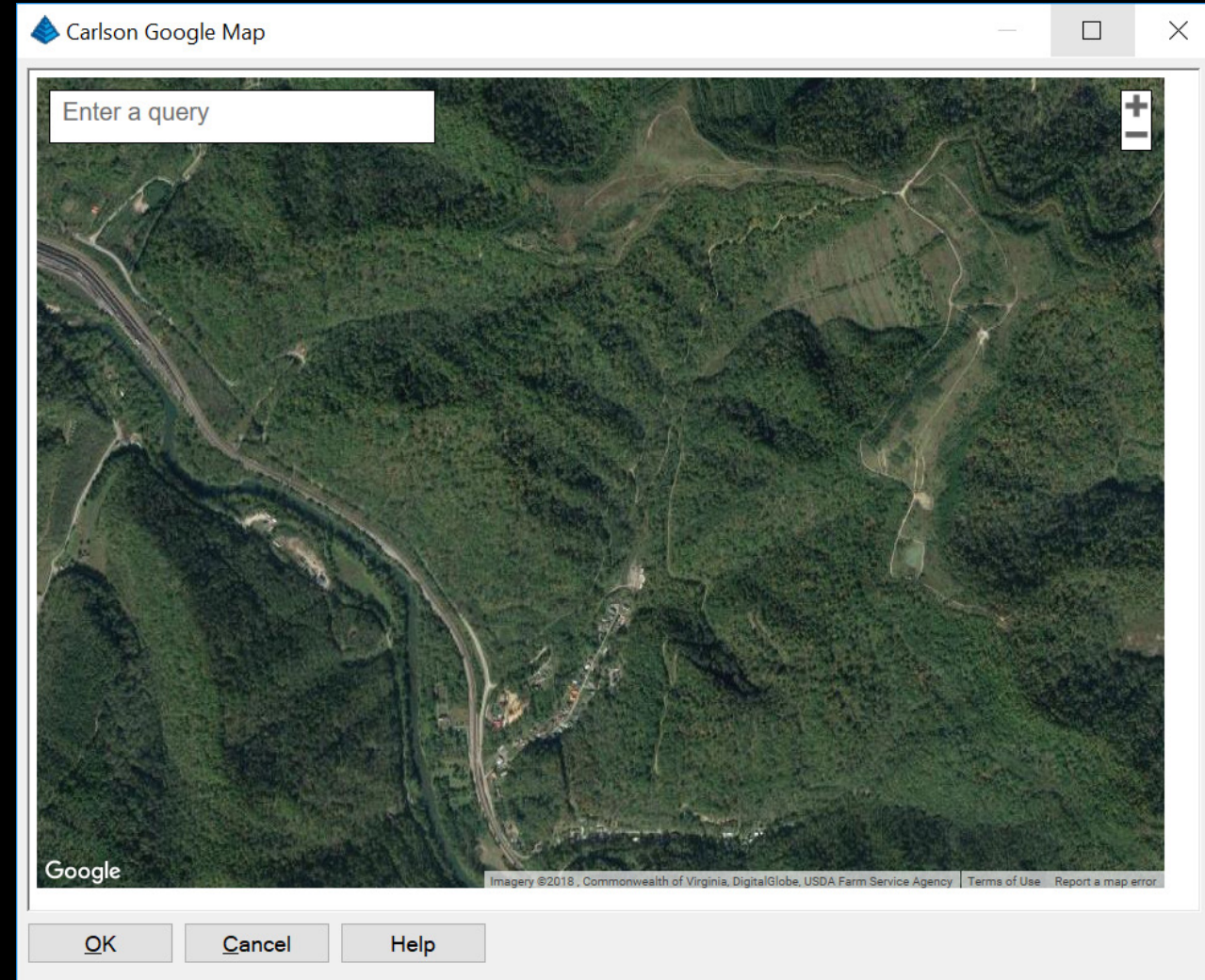
# Carlson

BREAK NEW GROUND



# Image By World File

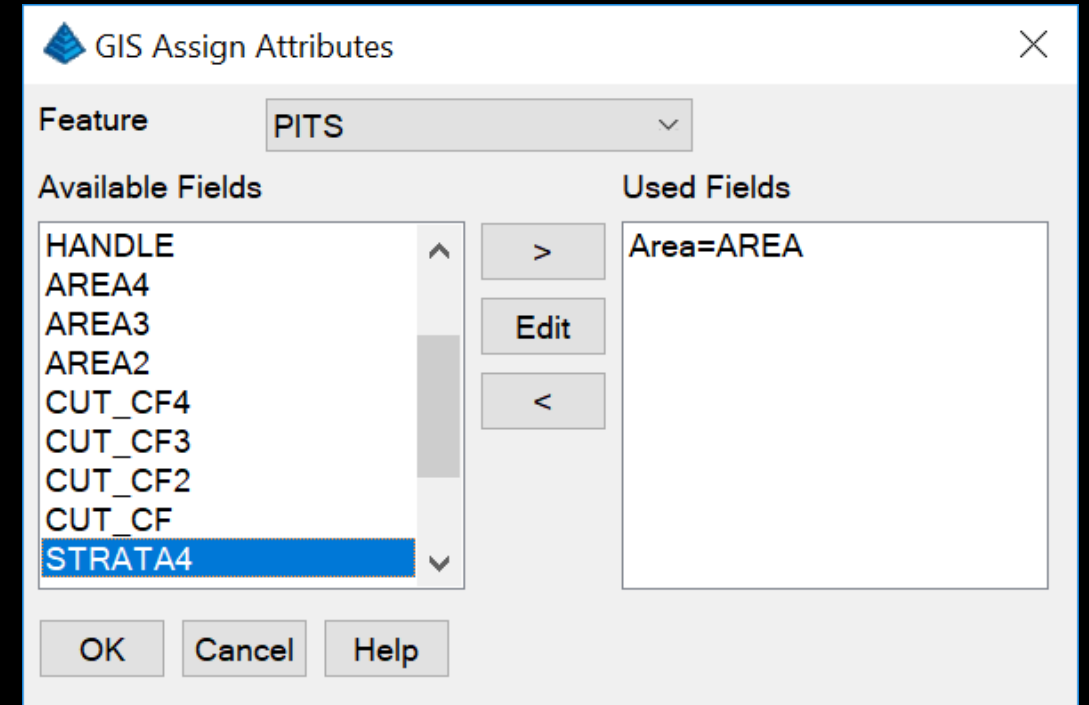
- Support for embedded world file data
- Support for .ECW file format
- Option to scale image





# Data Capture > CAD Properties

- Assign CAD properties to GIS attributes
  - Layer
  - Length
  - Area
  - Elevation



# Mining 2019



**Carlson**  
BREAK NEW GROUND



# Angled Drillholes

- Method for separate Dip/Azimuth table
- Import Dip/Azimuth from file
- 3D Geologic Columns

The screenshot displays the 'Edit Drillhole' software interface. At the top, a table lists strata data:

	Strata Name	Depth	Bottom Elv	Thickness	Key	Bed Name	Qual
1	A	100.00	904.46	100.00	<input type="checkbox"/>		<input checked="" type="checkbox"/>
2	B	200.00	808.91	100.00	<input type="checkbox"/>		<input checked="" type="checkbox"/>
3	C	300.00	713.37	100.00	<input type="checkbox"/>		<input checked="" type="checkbox"/>
4	D	400.00	618.35	100.00	<input type="checkbox"/>		<input checked="" type="checkbox"/>

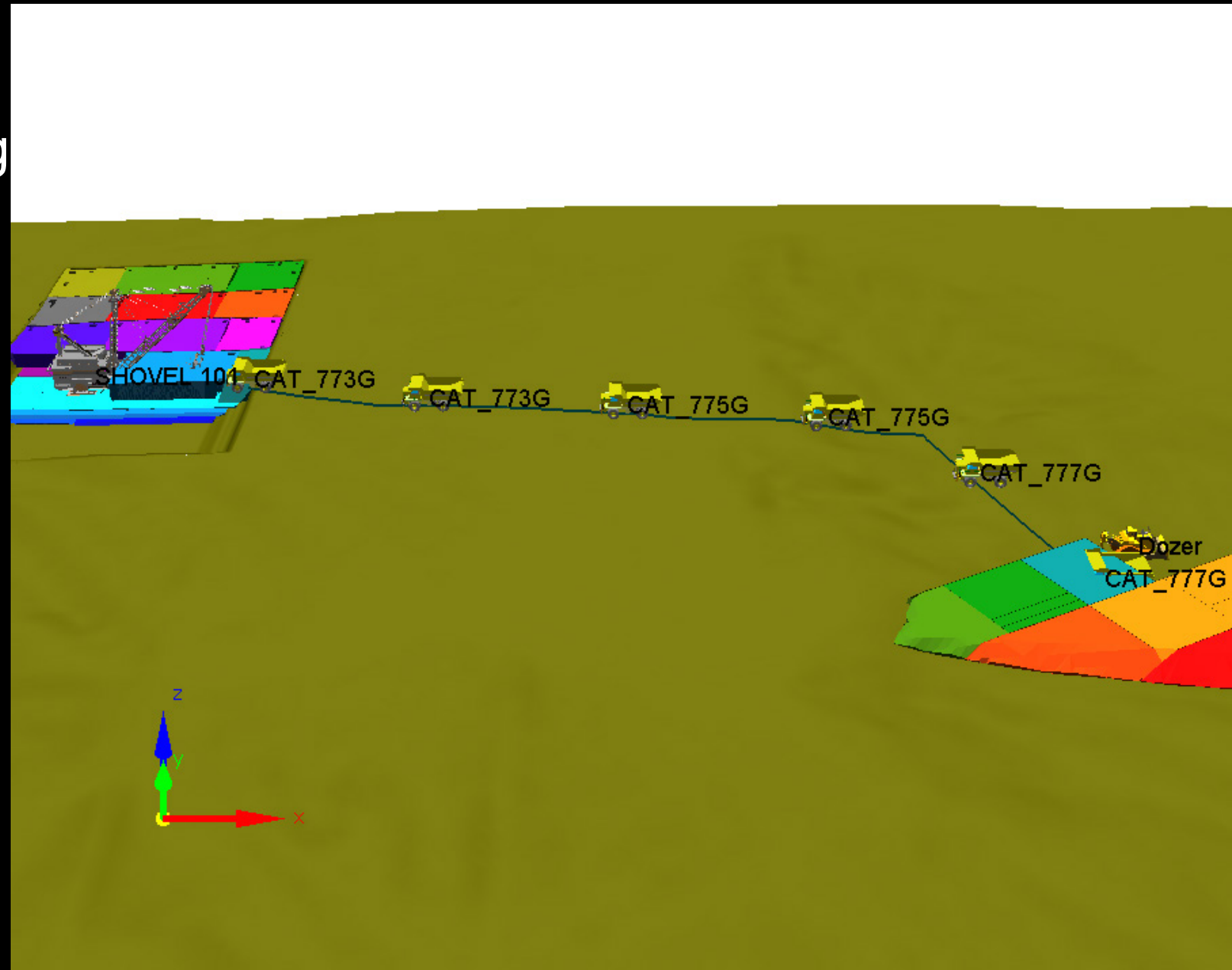
Below this table is an 'Edit Dip/Azi Table' dialog box with the following data:

	Depth	Thickness	Bottom Elv	Dip	Azi
1	20.000	20.000	980.681	15.0	45.0
2	40.000	20.000	961.888	20.0	40.0
3	60.000	20.000	942.569	15.0	45.0
4	80.000	20.000	923.775	20.0	40.0
5	120.000	40.000	885.138	15.0	45.0
6	140.000	20.000	866.344	20.0	40.0
7	160.000	20.000	847.026	15.0	45.0
8	180.000	20.000	828.232	20.0	40.0
9	220.000	40.000	789.595	15.0	45.0
10	240.000	20.000	770.801	20.0	40.0
11	260.000	20.000	751.483	15.0	45.0
12	280.000	20.000	732.689	20.0	40.0

The main interface also includes a 'Summary' section with fields for 'Source: Current', 'Description', 'Adjustment Method Name', 'Northing', 'Surface Elevation' (1000.0000), 'Drillhole Type' (UNKNOWN), 'X-Y Quality' (Unknown), 'Z Quality' (Unknown), and 'Density' (155.000). There are also 'Attribute Fields' and 'Edit Attributes' buttons, and a 'Zoom Extents' button on the right side.

# View 3D Timing

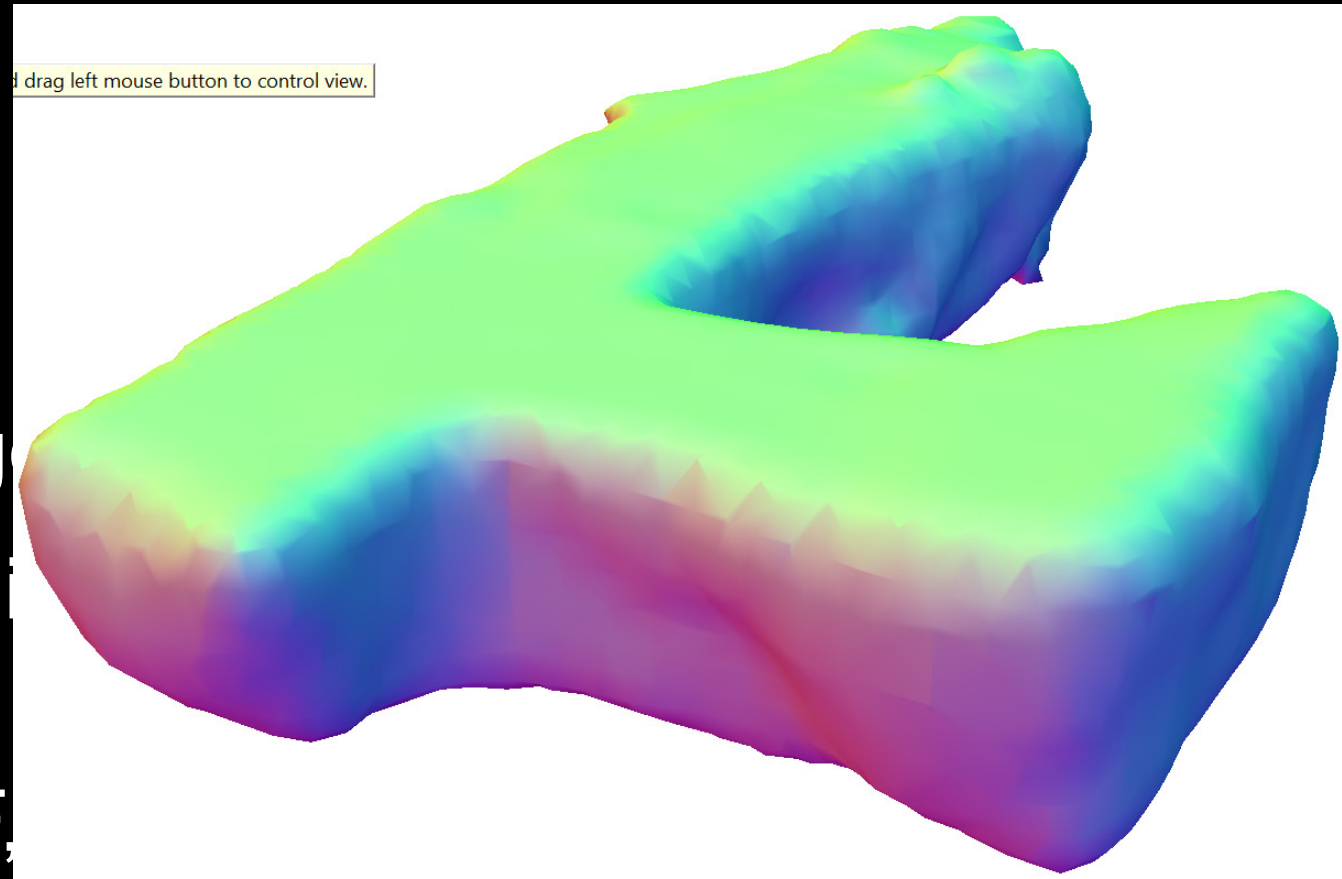
- 3D viewer for
  - Surface Equipment Timing
  - Spoil Timing
  - Haul Cycle Analysis



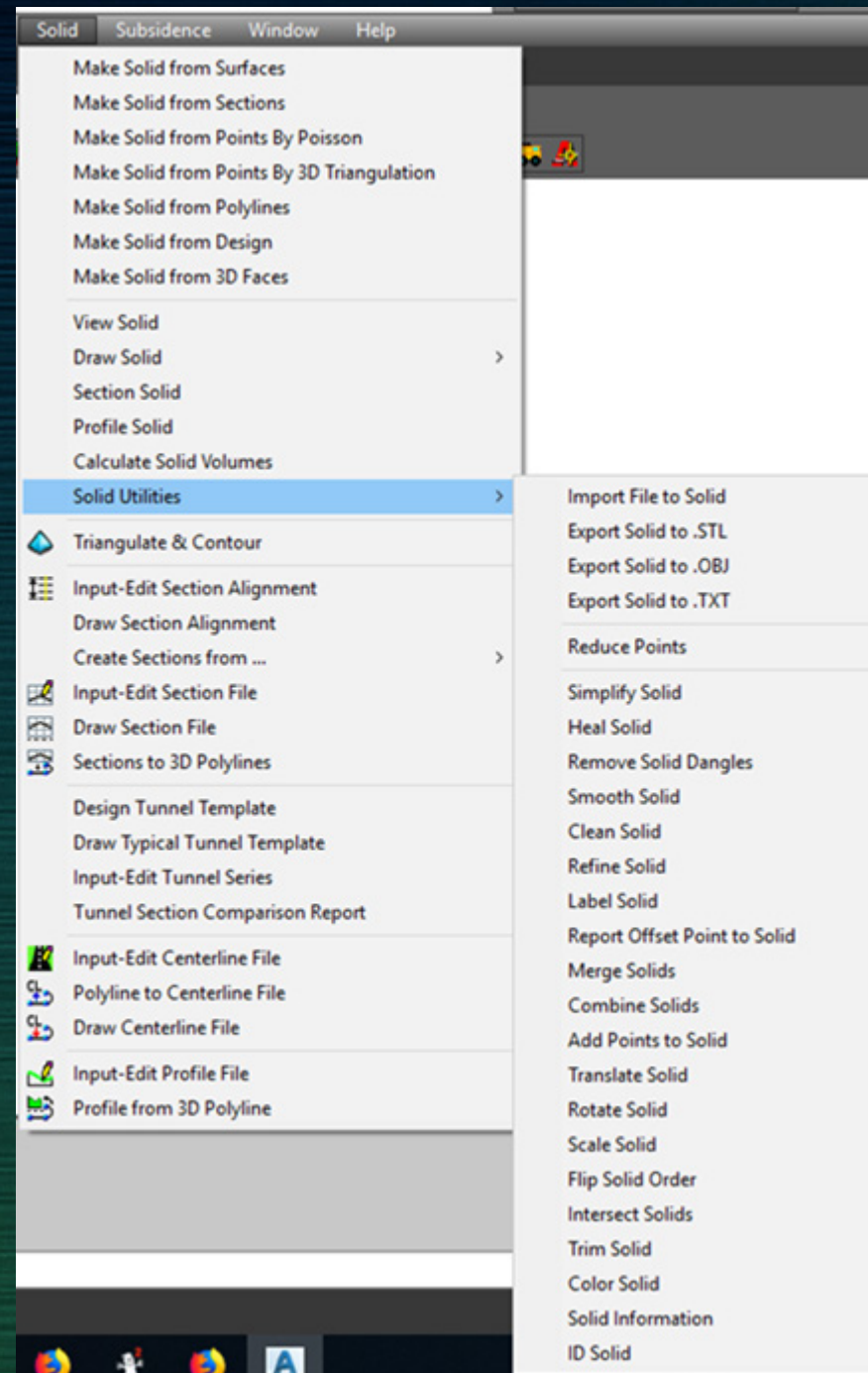


# Solids

- Create: 3D triangulation, 3D faces, Poisson
- View: Texture, normals, elevation; smooth; display edges
- Utilities: Section, merge, simplify, refine, smooth, intersect
- Import/Export: OBJ, STL, DXF, SJP



# Solids Enhancements





# Point Cloud

- Basic Module: Subset of commands
- Draw: Cloud object
- Select: By Color, By Sphere, Coordinate Points
- Create Points By Grid
- Snaps: Cross section and curb
- View Upgrades: Clip planes, lighting controls, wireframe, speed
- Profile: Vertical walls and overhangs
- Solid: Heal, Simplify, Smooth, Volumes

For more details on Carlson 2019, see

<http://www.carlsonsw.com/products/office-software/carlson-2019/>

## Maintenance Customers

- Notice by email
- [http://update.carlsonsw.com/serial\\_upgrade\\_lookup.php](http://update.carlsonsw.com/serial_upgrade_lookup.php)
- <http://update.carlsonsw.com/updates.php>

Thanks for listening.

For questions, email  
[support@carlsonsw.com](mailto:support@carlsonsw.com)

Or call 606-564-5028

Carlson "From Field to the Finish Line"

carlsonsw.com





# New Office Software

P3D – Topo

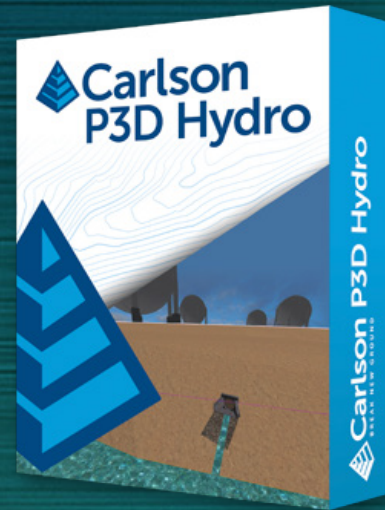
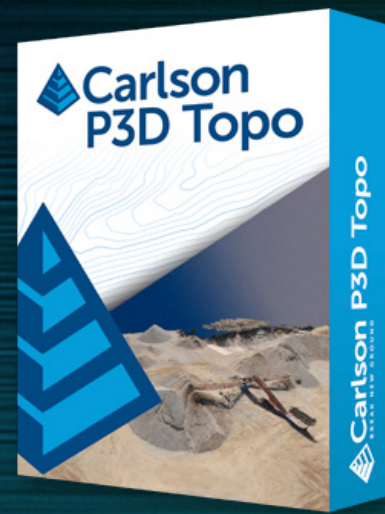
P3D – Hydro

P3D – Drill & Blast >> Blast Commander

Minefeed

Carlson Photo Capture (Subscription –based)

\*Works with drone data





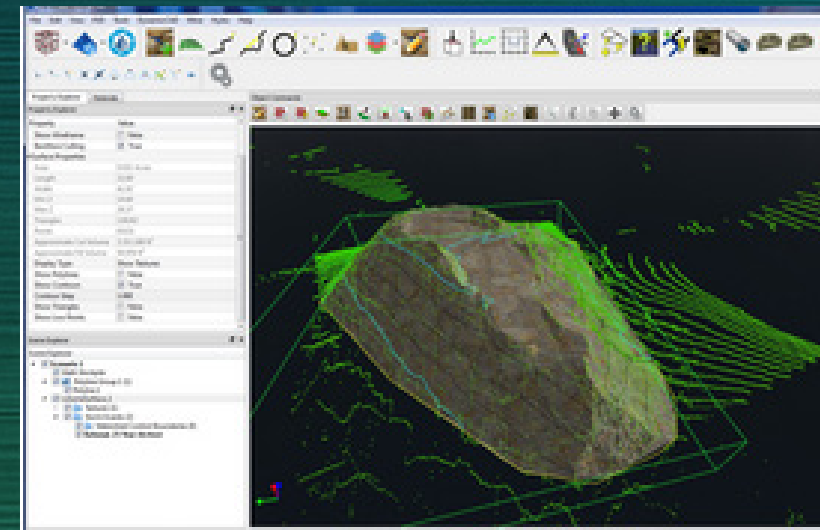
# P3D Topo



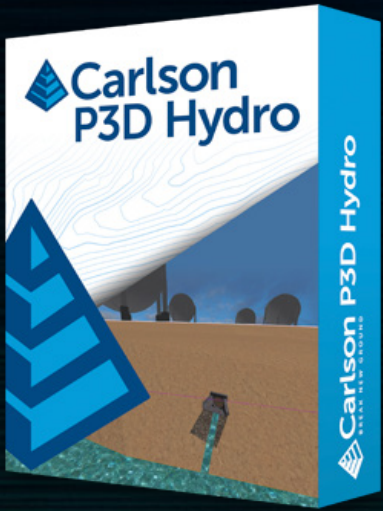
## Bridge the gap between drones and CAD

Designed for use by surveyors, civil engineers, and contractors, Precision 3D Topo allows users to import survey data, points, polylines, surfaces, point clouds, both traditional LIDAR and aerial drone survey data, and more from a wide variety of programs and entities to create usable 3D surfaces.

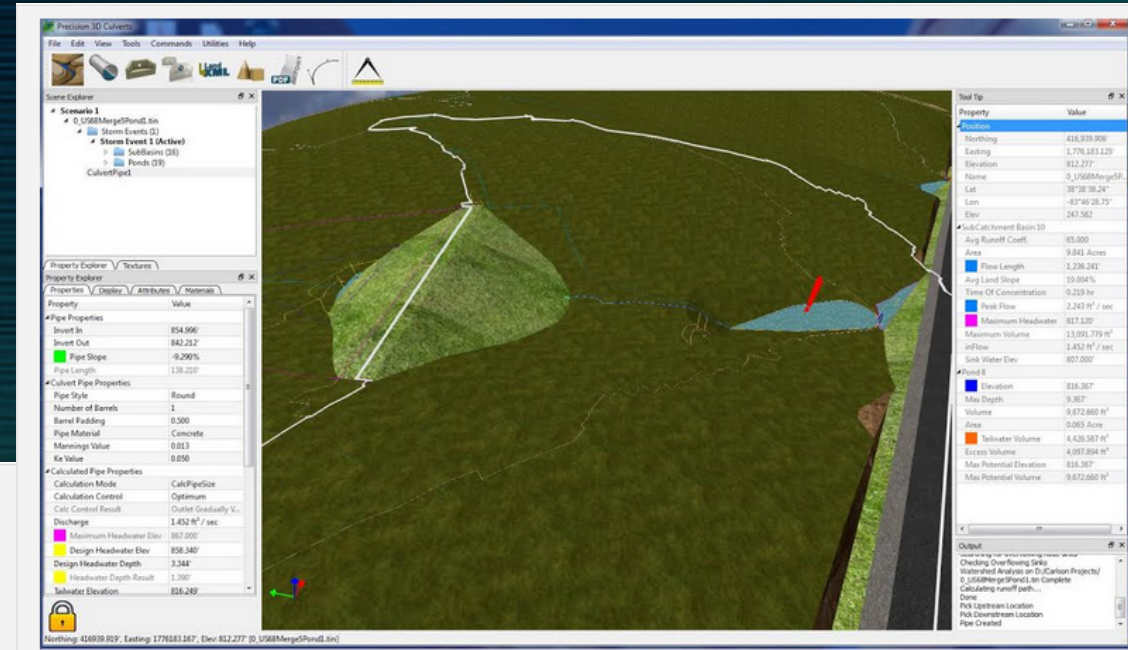
- Importing Point Cloud data from Lidar and Aerial Drone mapping.
- Merge and edit point clouds to create surface models.
- Import survey data to further refine surface models.
- Powerful surface Editing tools to perfect surface models. Including Google Maps photographic background, automated Google surface creation.
- Easy surface volume tools directly from point clouds or surfaces.
- Advanced Texturing and Presentation Tools
- Import / Export all data as LandXML, DXF, and Surface Models as TIN, TN3, and TTM.



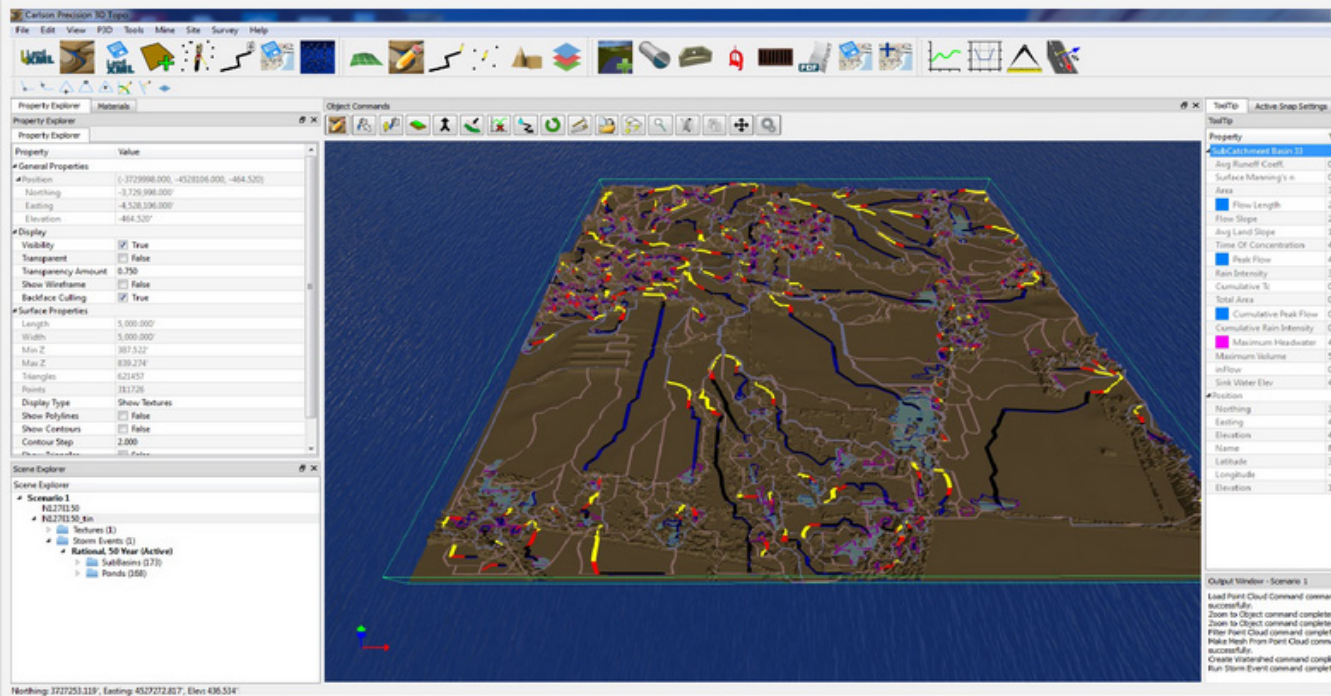




# P3D Hydro



P3D solid modeling



Lidar surface & watersheds

Subcatchment Name	Average Runoff Coefficient	Area (Acres)	Flow Length [US Survey Feet]	Flow Slope (Percentage)	Average Land Slope (Percentage)	Time Of Concentration (Minutes)	Peak Flow [Cubic Feet Per Second]	Rain Intensity (Inches)	Maximum Headwater [US Survey Feet]	Maximum Volume [Cubic Feet]	inFlow [Cubic Feet Per Second]	Water Elevation [US Survey Feet]	Cumulative Time (Minutes)	Total Area (Acres)
SubCatchment Basin 0	0.651	12.823	1518.692	7.067	20.069	41.726	28.200	3.379	\$35.230	758226.696	0.000	806.000	41.726	12.823
SubCatchment Basin 1	0.650	2.048	450.480	5.328	6.831	31.721	5.280	3.966	\$84.000	0.000	0.000	884.000	31.721	2.048
SubCatchment Basin 2	0.650	2.836	677.308	4.626	9.340	14.885	10.544	5.719	\$74.000	0.000	0.000	874.000	14.885	2.836
SubCatchment Basin 3	0.659	30.663	1193.839	6.794	20.389	25.737	92.933	4.600	\$74.000	0.000	0.000	754.000	25.737	30.663
SubCatchment Basin 4	0.670	11.717	1928.885	7.033	24.593	67.759	19.397	2.470	\$64.000	198725.522	121.133	746.000	67.759	55.203
SubCatchment Basin 5	0.650	2.392	530.651	16.835	20.302	13.671	9.262	5.958	\$88.000	0.000	0.000	788.000	13.671	2.392
SubCatchment Basin 6	0.650	2.063	337.261	4.744	10.579	4.032	13.238	9.871	\$96.000	0.000	0.000	896.000	4.032	2.063
SubCatchment Basin 7	0.650	12.269	1342.903	22.042	31.853	16.555	43.673	5.476	\$94.000	0.000	0.000	594.000	16.555	12.269
SubCatchment Basin 8	0.650	7.492	788.515	6.848	11.718	43.670	15.998	3.285	\$54.000	0.000	0.000	854.000	43.670	7.492
SubCatchment Basin 9	0.650	10.774	1072.143	13.851	22.403	17.136	37.753	5.391	\$78.000	0.000	0.000	758.000	17.136	10.774

P3D Hydro - Sample Report





## Carlson Photo Capture



**Fast & Scalable Cloud Service**



**UAV Photogrammetry to 3D Data**

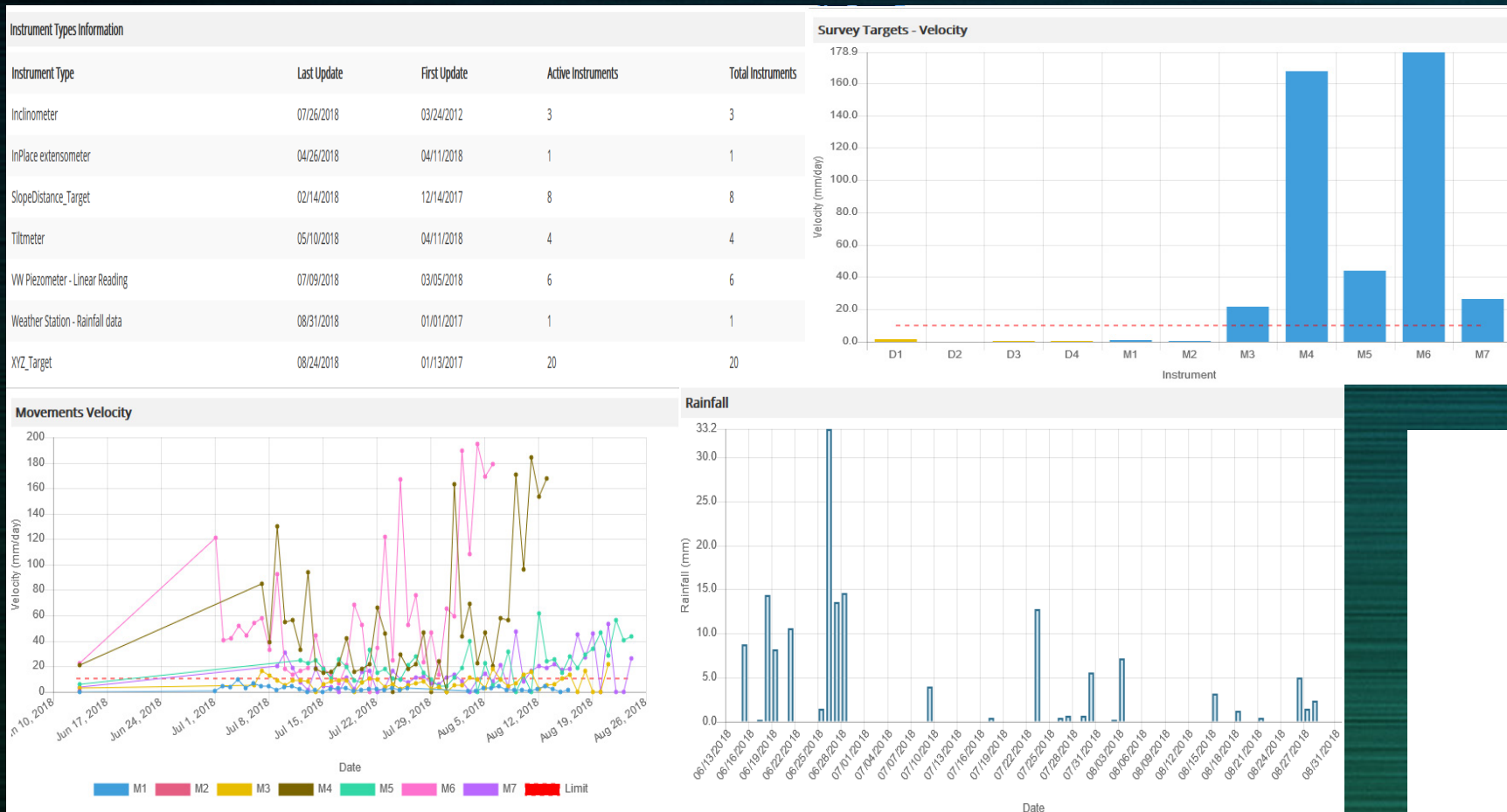


**Carlson Point Cloud & P3D Topo Import**



# Minefeed

## Slope stability monitoring software



# Training and Support

## Training

418 Youtube videos out there (free)

We still make house calls

We can provide online training

You can arrange training at Maysville

User Group training – we just had one in San Diego this month

and Tech Support is still free!



# 418 Training videos and growing

The screenshot shows a YouTube video player for a video titled "Precision 3D Topo 2018 | Easy Google Surface Images and Other New Features". The video player shows a software interface with a 3D landscape view. To the right of the video player is a list of uploads from the channel "CarlsonSoftware". The list shows 418 videos as of 2/9/2018. The first video in the list is "Precision 3D Topo 2018 | Easy Google Surface Images and Other New Features" with a duration of 26:14. Below the video player, the video title "Precision 3D Topo 2018 | Easy Google Surface Images and Other New Features" is displayed, along with 391 views, 3 likes, and 0 comments. The channel name "CarlsonSoftware" and the upload date "Published on Dec 21, 2017" are also visible. A red "SUBSCRIBE 1.7K" button is located at the bottom right of the video player area.

Carlson Software videos

Uploads from CarlsonSoftware

CarlsonSoftware - 1 / 418

418 Training videos as of 2/9/2018

Precision 3D Topo 2018 | Easy Google Surface Images and Other New Features  
CarlsonSoftware  
26:14

Precision 3D Topo 2018 | Point Cloud Merge LIDAR and Aerial Drone Data  
CarlsonSoftware  
42:07

Carlson Precision 3D Topo 2018 | Quick Culvert Calculations from LIDAR  
CarlsonSoftware  
24:22

Carlson Precision 3D Topo 2018 | Google Maps Data  
CarlsonSoftware  
6:55

Precision 3D Topo 2018 | Easy Google Surface Images and Other New Features

391 views

CarlsonSoftware  
Published on Dec 21, 2017

SUBSCRIBE 1.7K

Carlson Precision 3D Topo 2018 | Point Clouds  
CarlsonSoftware  
181 views  
27:21

Carlson Precision 3D Topo 2017 | Processing Aerial Drone Data



Our goal is still the  
same

Customer satisfaction