

KY Division of Abandoned Mine Lands

Department of Natural Resources

Energy and Environment Cabinet – Secretary Rebecca Goodman

Department for Natural Resources – Commissioner Gordon Slone

Division of AML – Director Justin Adams

Division of AML – Assistant Director Bill Overman



ENERGY AND
ENVIRONMENT CABINET





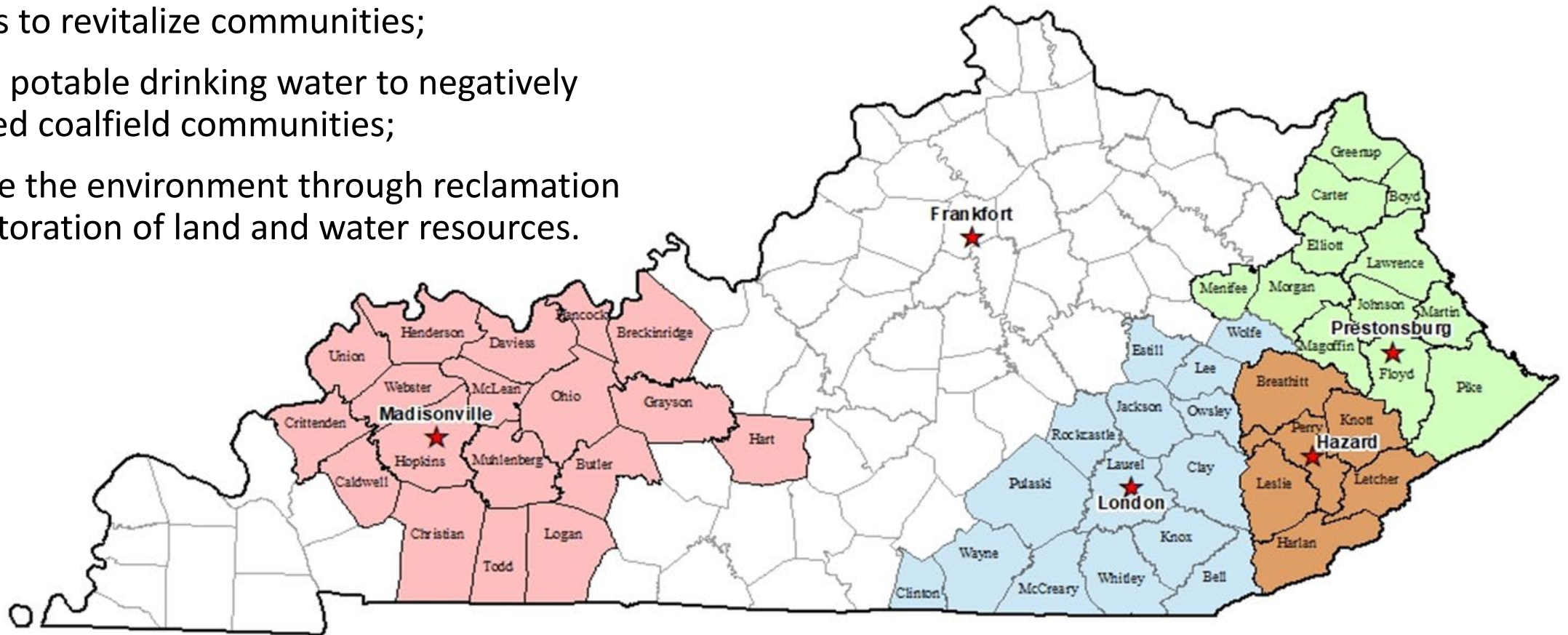
AML MISSION

To serve and protect the health, safety, and property of citizens and enhance the environment of the Commonwealth affected by historic coal mining as defined in the Surface Mining Control and Reclamation Act.

AML VISION

The Division's commitment to the Commonwealth is to provide:

- comprehensive service to the citizens negatively impacted by historic coal mining;
- support innovative and sustainable economic benefits to revitalize communities;
- provide potable drinking water to negatively impacted coalfield communities;
- enhance the environment through reclamation and restoration of land and water resources.



AML FUNDING SOURCES

Regular AML Grant (Fee-based grant)

- Original AML grant program established in SMCRA
- Fluid funding amounts based on historic mining and current mining
- \$8,000,000.00 current annual funding average
- Abatement of Historic Mining Hazards

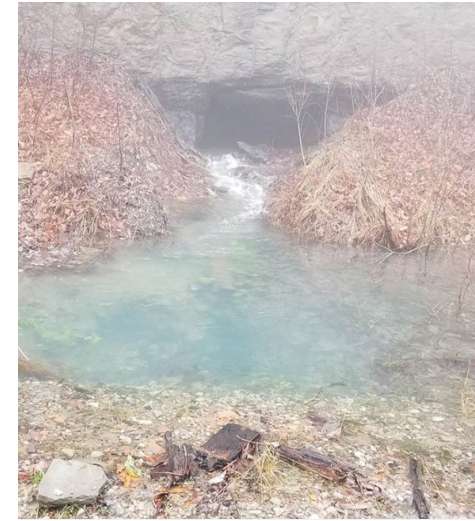
Bipartisan Infrastructure Law (BIL)

- Part of the IIJA federal law
- \$74,252,680.00 per year for 15 years for the Abatement of Historic Mining Hazards

AMLER Grants

- Annually voted upon by Congress, from general funds
- Distributed in grants to applicants selected by the Cabinet Secretary
- Appalachian Counties only
- \$25,000,000.00 average award to distribute for grants
- Community Economic Revitalization and Reclamation

Division of AML administers the following Programs:



1. Fee-based AML Reclamation Program (AML fee-based grant)
2. IJJA/BIL AML Reclamation Program (BIL grant)
3. Water Supply Replacement Program (BIL or fee-based grants)
4. AML Economic Revitalization (AMLER) Program (AMLER Grants)
5. Long-term AML Reclamation Program (up to 30% set-aside from annual BIL grant)
– result of the recently-passed STREAM Act (for subsidence, mine fires and AMD)
6. Acid Mine Drainage (AMD) Abatement Program (Up to 30% set-aside from annual fee-based grant)
7. Bond Forfeiture Reclamation Program (bond forfeiture and KRGF funds)

AML/BIL Reclamation Projects



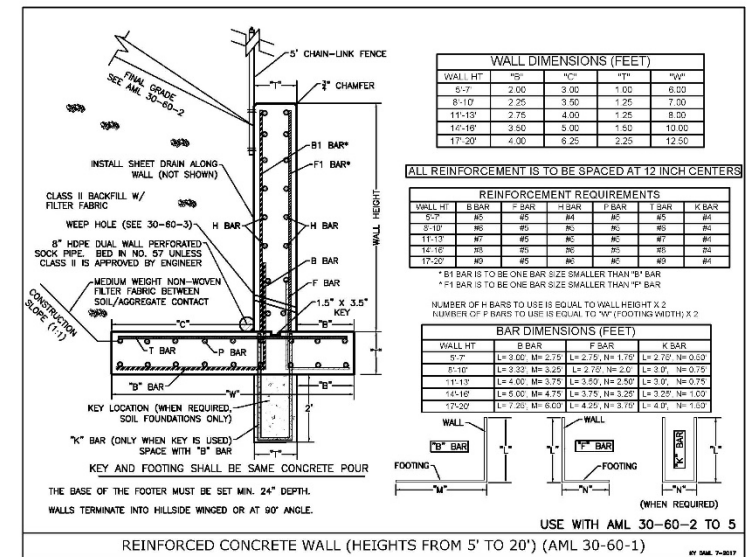
The definition of an engineer

Definition of an engineer: somebody who makes precise guesswork based on unreliable data provided by people with questionable knowledge. Never wrong. Likes tables.

AML Reclamation



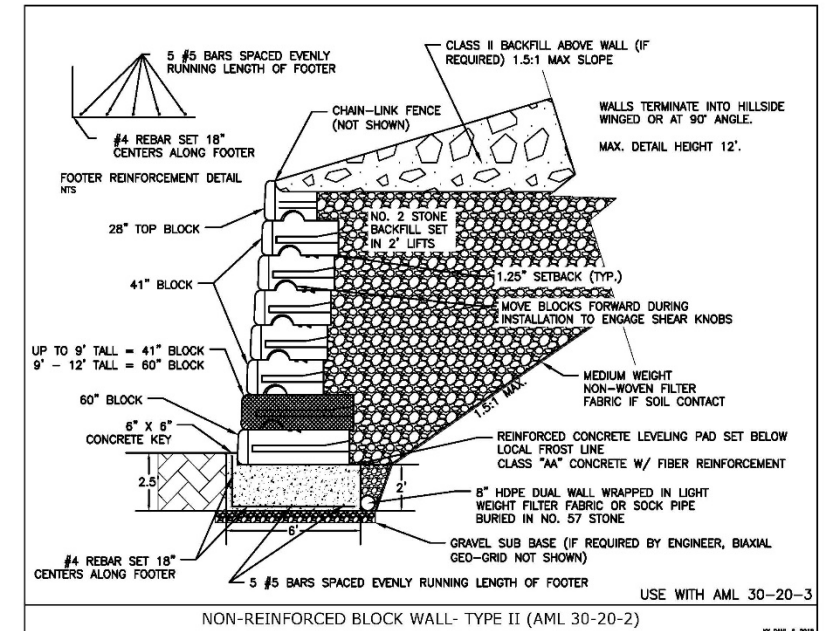
An example of an AML installed Concrete Retaining Wall. Note the residential seeding in the yard area.



AML Reclamation



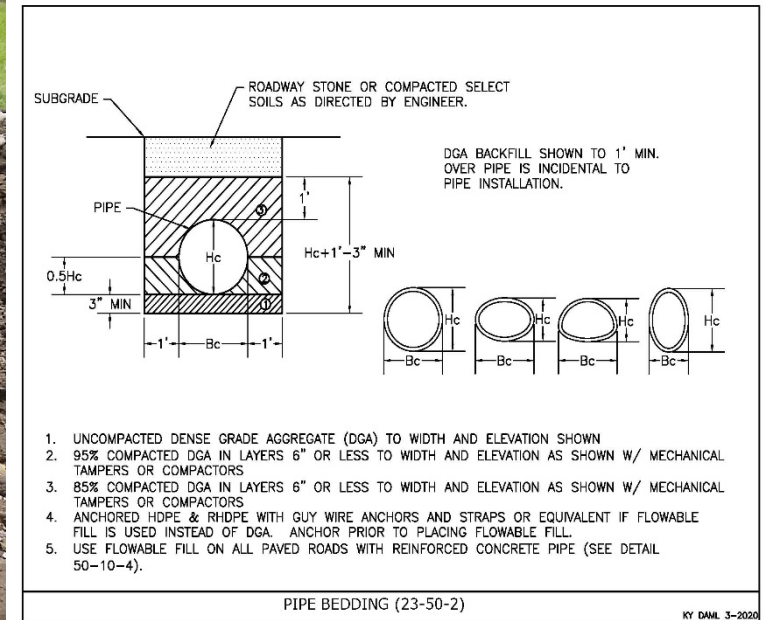
An example of an AML installed Type II Non-reinforced Concrete Block Wall with backfill.



AML Reclamation



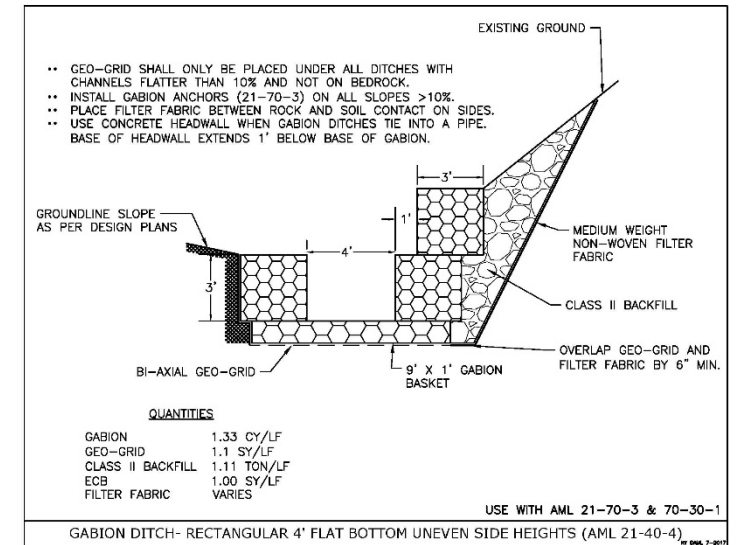
An example of an AML installed Drainage Culvert with Dense Grade Aggregate backfill.



AML Reclamation



An example of an AML Installed Gabion Ditch with uneven side heights and a Concrete Block Tied Mat ditch intersecting the drainage.

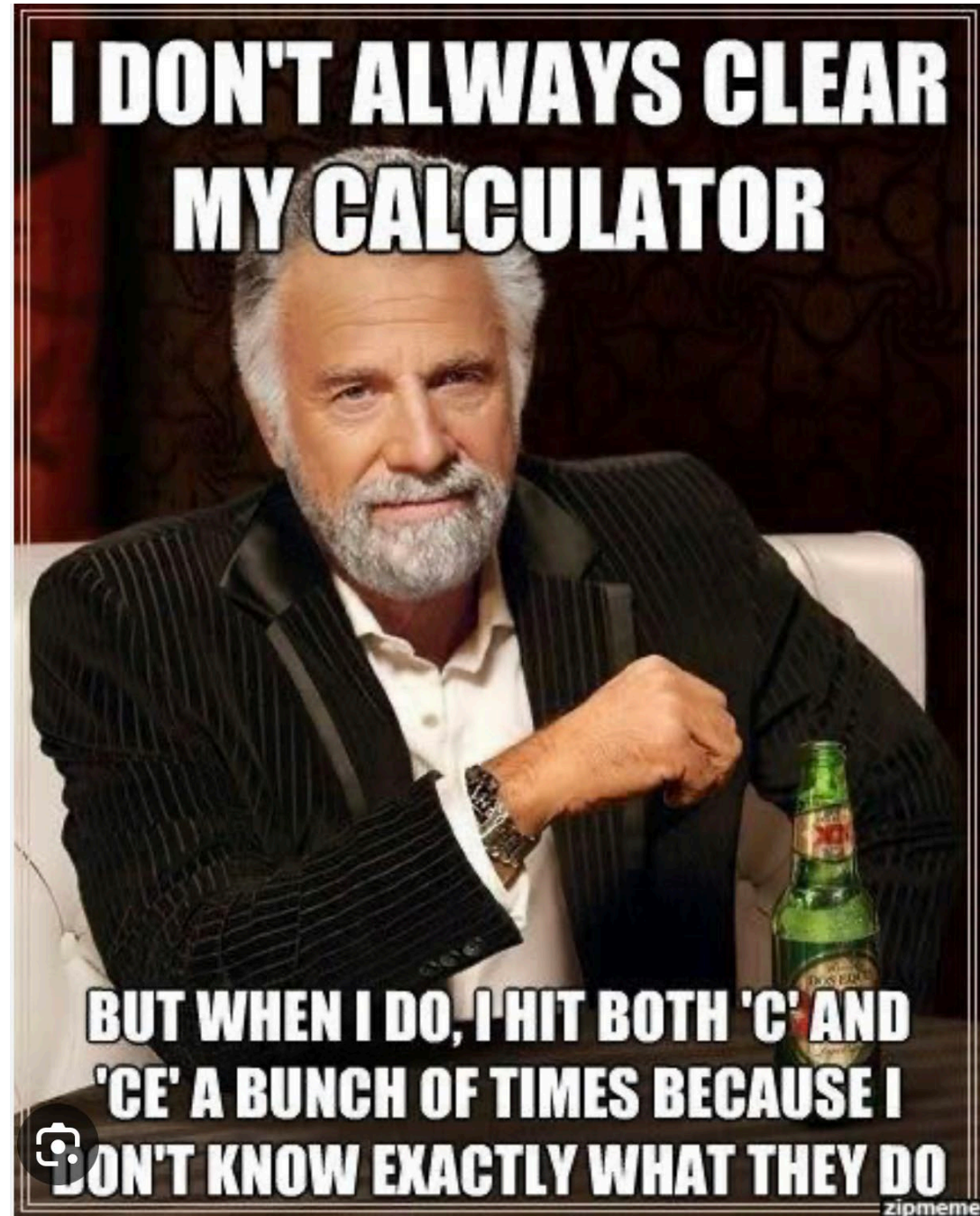


Too much technical stuff!

This is a slide for any of the
Non-engineers
In the room,
If there are any!

This might make some engineers go over the edge!

The Most Interesting Man
in the World



Bond Forfeiture Projects





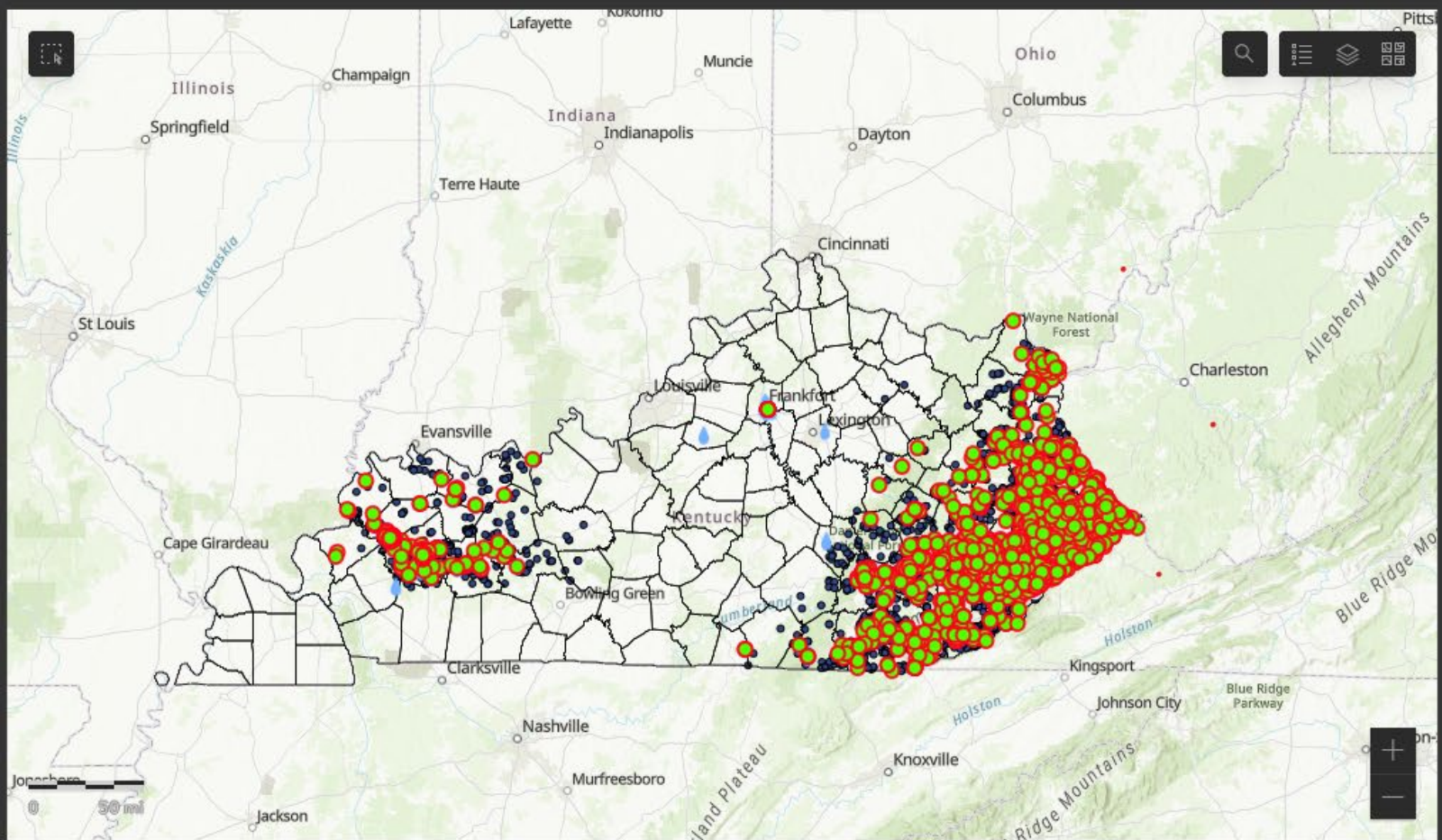
**Acid Mine
Drainage
Projects**



**Water Supply
Replacement
Projects**

AMLER Projects

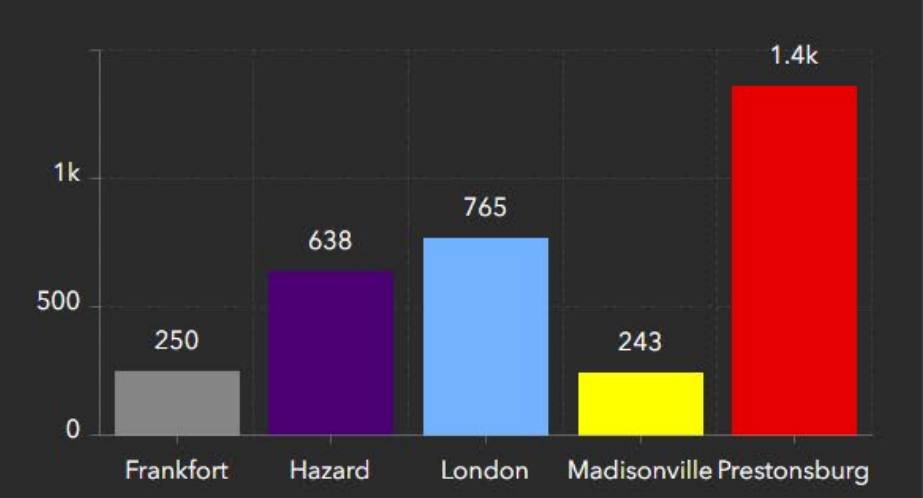




AML Total Inquiries
18,301
15,045 Historical and 3,256 Survey Gathered
 Last update: 12 minutes ago

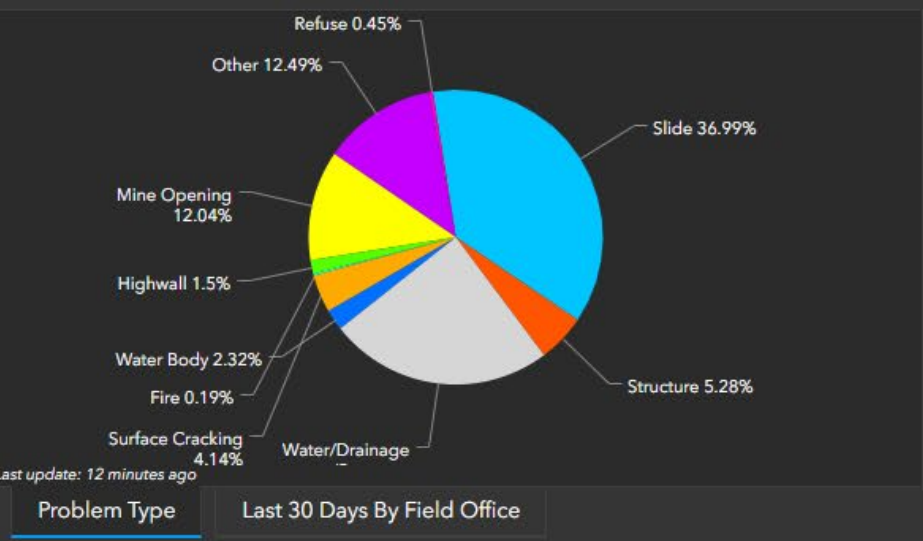
Investigations This Year
468
 Last update: 12 minutes ago

Investigations per Field Office

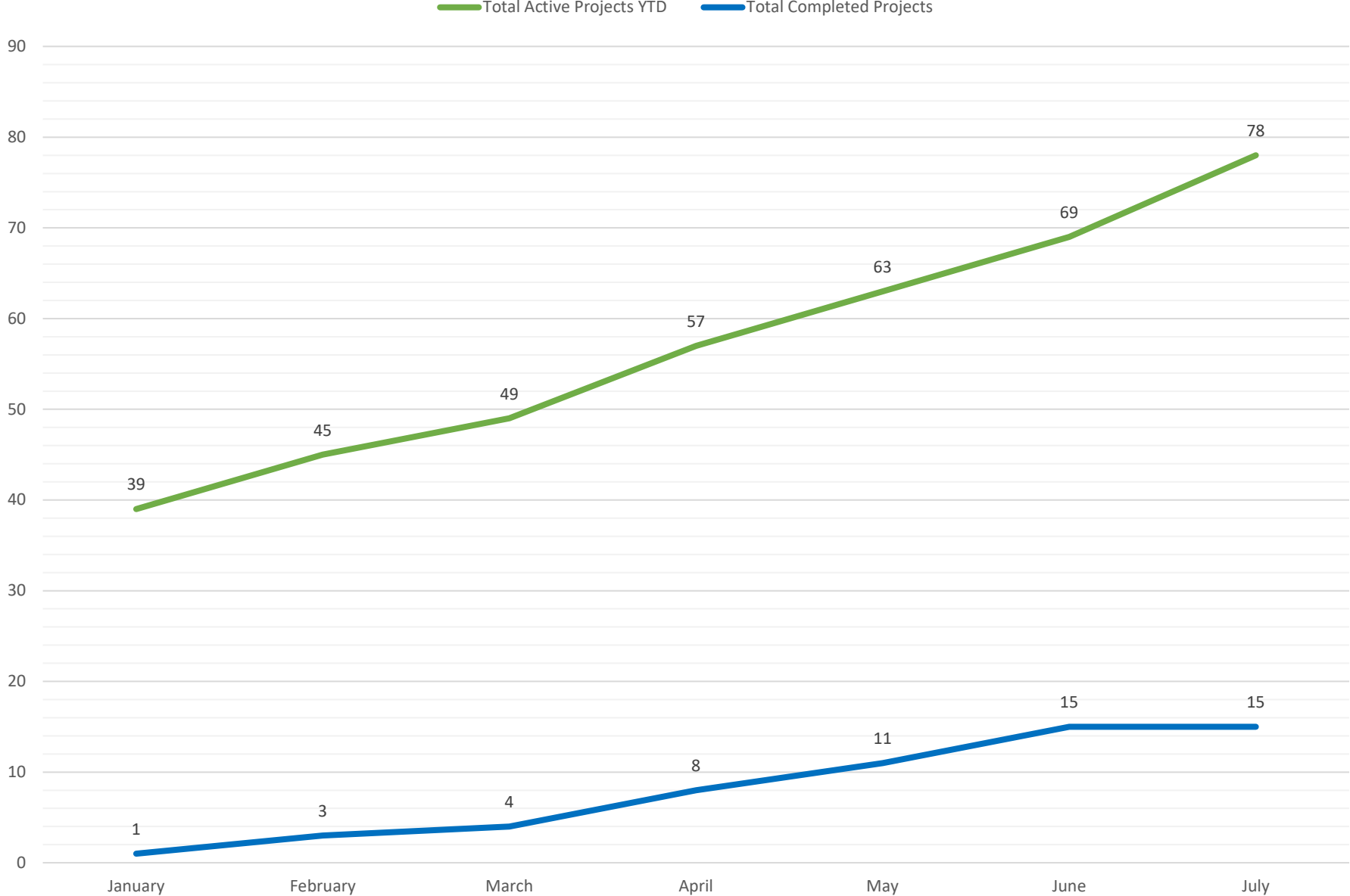


Last update: 12 minutes ago

Investigations Conducted per Month



Active vs Completed YTD (All Programs)





How many consulting engineers does
it take to change a lightbulb?

Just one, but it will cost you \$5,000!



ENERGY AND
ENVIRONMENT CABINET

Kentucky Division of
Abandoned Mine Lands

<https://eec.ky.gov/Natural-Resources/Mining/Abandoned-Mine-Lands/Pages/default.aspx>