

Division of Abandoned Mine Lands PEM Seminar

Energy and Environment Cabinet – Secretary Rebecca Goodman
Dept. For Natural Resources – Commissioner Gordon Slone
Division of AML – Director Bob Scott, P.E., P.L.S.





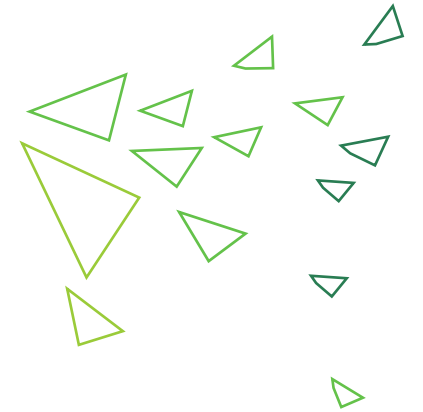
The Division of Abandoned Mine Lands

Department of Natural Resources
Energy and Environment Cabinet



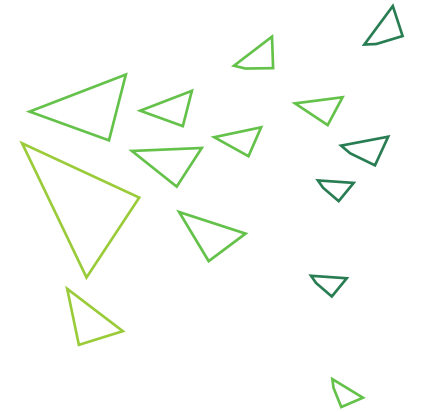
A history of service

For more than 3 decades the Kentucky Division of Abandoned Mine Lands has been mitigating mine hazards threatening citizens and their homes across the coalfields.



AML is 100% federally funded

Coal operators pay a tonnage extraction fee to the federal government which goes into the AML Trust Fund. A portion of that funding is distributed, annually, to states and Tribes.



A record of performance

For more than 3 decades the Kentucky Division of Abandoned Mine Lands has been mitigating mine hazards threatening citizens and their homes across the coalfields.

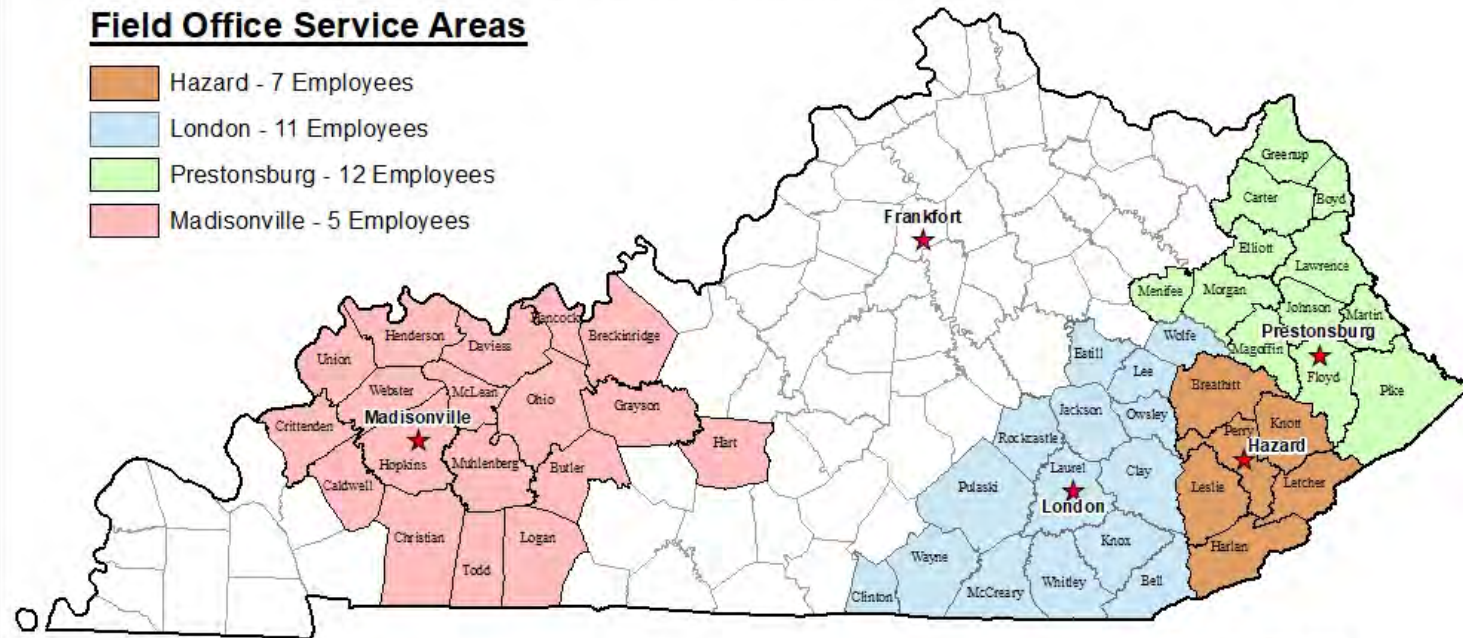
Office Coverage & Locations

Division of Abandoned Mine Lands

Frankfort	(502) 564-2141	300 Sower Blvd, Frankfort, KY 40601
Hazard *	(606) 487-1110	101 Bulldog Lane Suite 103, Hazard, KY 41701
London	(606) 330-2085	State Office Bldg, 85 State Police Road, London, KY 40741
Madisonville	(270) 824-7534	State Office Bldg, 625 Hospital Drive, Madisonville, KY 42431
Prestonsburg	(606) 889-1741	3140 South Lake Drive Suite 6, Prestonsburg, KY 41653

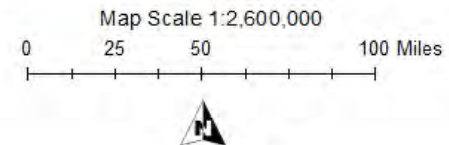
Field Office Service Areas

- Hazard - 7 Employees
- London - 11 Employees
- Prestonsburg - 12 Employees
- Madisonville - 5 Employees



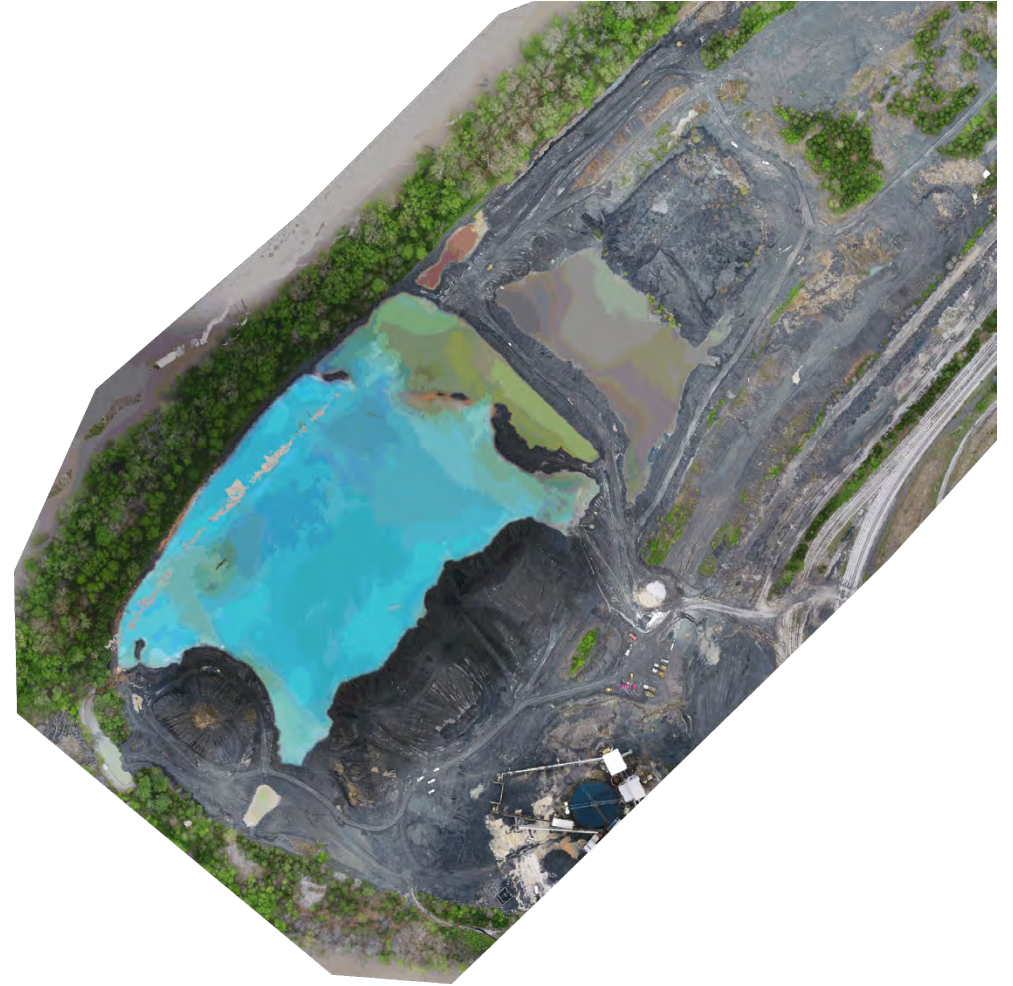
State Wide Offices

- ★ Frankfort - 38 Employees



PEM Talking points

AML Grant Projections
Reauthorization and Reclaim Act
AML Bond Forfeiture Opportunities
AML Pilot Program



AML Grants

Fiscal Year	Amount
2021	\$11,314,447.00
2020	\$19,505,644.00
2019	\$19,042,090.00
2018	\$12,649,694.00
2017	\$17,088,577.00
2016	\$18,201,399.00
2015	\$39,453,989.04
2014	\$42,428,406.00
2013	\$46,998,225.00
2012	\$37,721,012.00
2011	\$37,591,345.00
2010	\$12,750,165.00
2009	\$13,128,903.00
2008	\$11,992,212.00
2007	\$13,827,023.00
2006	\$14,646,259.00
2005	\$15,319,425.00
2004	\$15,600,794.00

Reauthorization – The AML fee of 28 cents per ton on surface coal and 12 cents per ton on underground coal is set to expire in 2021, which would ultimately bring an end to the AML program unless fee collection is reauthorized. 400 million dollars of AML sites still remain un-reclaimed in Kentucky and over 10 billion nationally

The U.S. House of Representatives passed H.R. 2, the Moving Forward Act on July 1. It included H.R. 4248 (the AML reauthorization bill) and H.R. 2156 (the RECLAIM Act). The latter bill included amendments negotiated between the Interstate Mining Compact Commission (IMCC) and the Blue-Green Alliance that will greatly enhance implementation of the law by the states and tribes should it pass. In addition to these amendments, IMCC and the National Association of Abandoned Mine Land Programs (NAAML) played a large role in drafting what became H.R. 4248.

A report was released from the Congressional Budget Office (CBO) regarding the cost estimates associated with H.R. 4248, the AML Reauthorization Act. While there are several parts to the CBO "score", it essentially indicates that there will be a \$395 million decrease in the deficit, which is good news for the bill's prognosis. This is unlike H.R. 2156 (the RECLAIM Act), which has a \$1.2 billion negative impact on the budget (and hence the need for an offset). There is uncertainty on how this offset requirement will be met, but since HR 2156 is also part of H.R. 2, there may be other provisions of H.R. 2 that provide for the necessary offset.

In the Senate, the prognosis for H.R. 2 is not known, but there may be must-pass elements of the bill that could be shaved off and passed by the Senate, including AML legislation. IMCC and NAAMLPA officers have had conference calls with several key Senate staffers (Barrasso, Murkowski and Manchin staff) to discuss AML legislation and in particular amendments to S. 3971 (the Barrasso-Enzi bill).



AML Bond Forfeiture opportunities

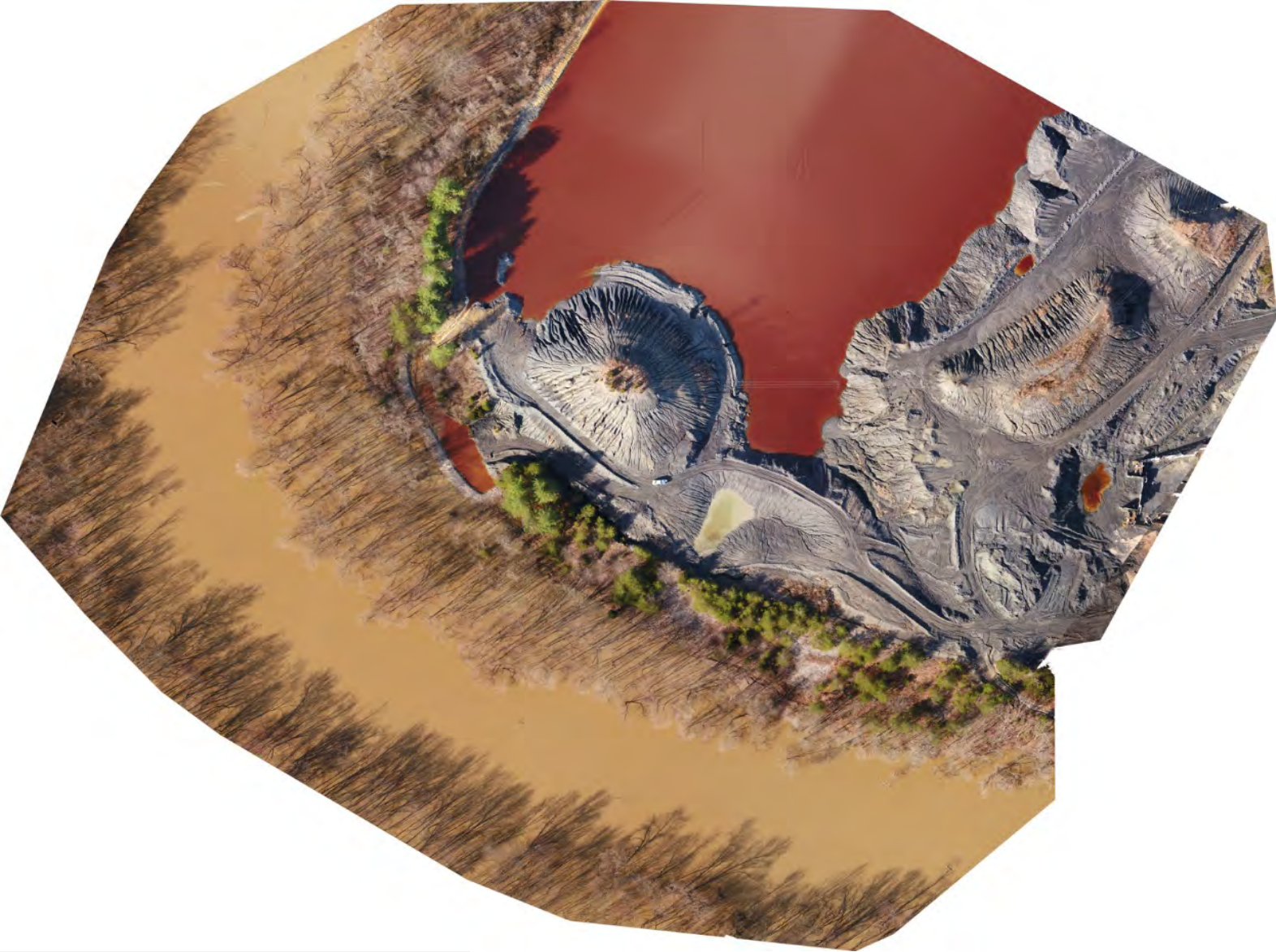
AML Bond Forfeiture Projects

T & T Permits 866-0338 and 866--0339









Bowie Refined Coal Estill County

A very rare “rare earth”
opportunity



Bowie Refined Coal Estill County

A very rare
“rare earth”
opportunity

DEPARTMENT FOR FACILITIES AND SUPPORT SERVICES
DIVISION OF ENGINEERING AND CONTRACT ADMINISTRATION

Request for Bid No. RFB-107-20
For: Bowie (AMD-AML)
Reclamation Project
Estill County, Kentucky

Opened: December 4, 2019
10:30 A.M., Eastern Time

Account No. 128 - 1200 -

Project Estimate: \$ 1,007,850.00

OFFICIAL BID TABULATION

BIDDER	LUMP SUM BID AMOUNT
1. Aspen Corporation	\$775,550.00
2. Sensabaugh Design & Construction	\$936,300.00
3. Triple H Excavating LLC	\$999,625.00
4. Nally & Hamilton Enterprises, Inc.	\$1,079,775.00
5. Pike Mining Services, LLC	\$1,680,300.00
6. Jave, LLC	\$1,918,100.00
7. Joe Asher Inc.	\$1,001,000.00

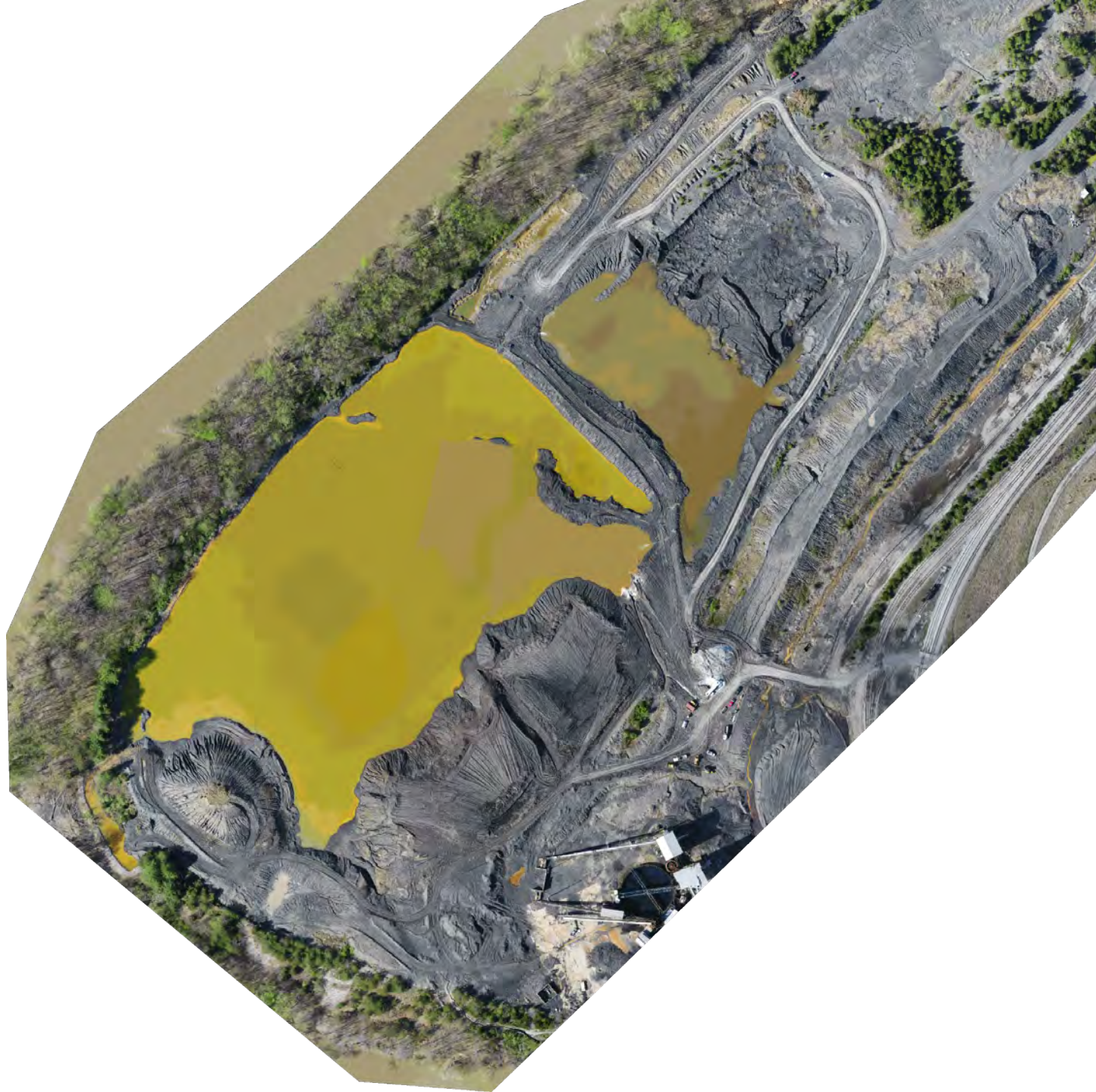


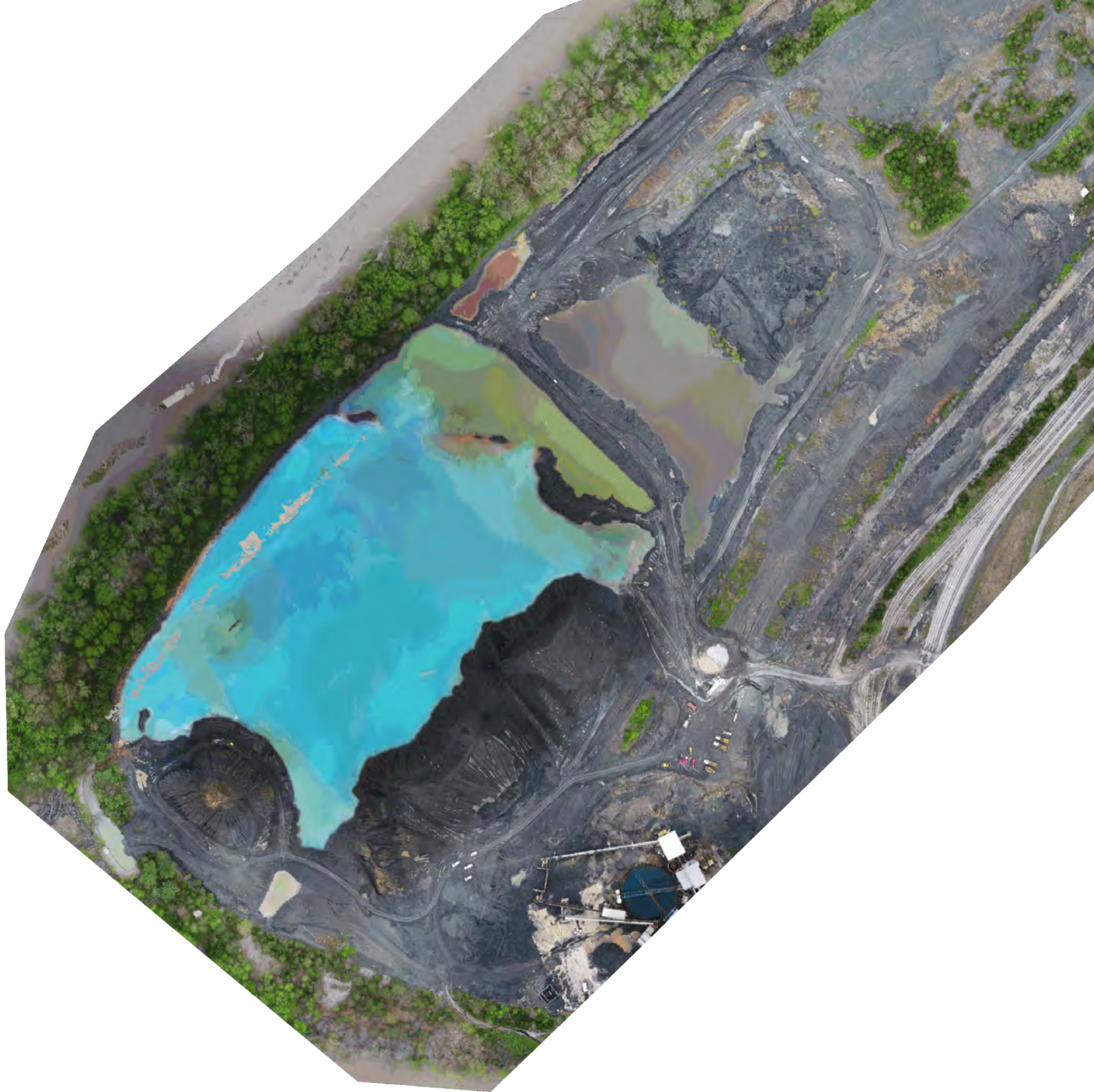






















You replied to this message on 8/27/2020 2:28 PM.



Carbonado Bond Forfeiture

Hopkins County



0 300 600 1,200 Feet



C&R Holdings Permit # 888-0096 Bond Forfeiture Project

Bond Forfeiture Projects



DEPARTMENT FOR FACILITIES AND SUPPORT SERVICES
DIVISION OF ENGINEERING AND CONTRACT ADMINISTRATION

Request for Bid No. RFB-219-20
For: G V PBG 20
Bond Forfeiture
Morgan County, Kentucky

Opened: June 10, 2020
10:30 A.M., Eastern Time

Account No. 128 - 1200 -

Project Estimate: \$ 810,500.00

OFFICIAL BID TABULATION

BIDDER	LUMP SUM BID AMOUNT
1. True Contracting	\$673,815.95
2. Pike Mining Services	\$716,400.00
3. Foothills Contracting	\$796,690.00
4. Jigsaw Enterprises	\$844,800.00
5. Hawkeye Contracting Company Inc	\$844,950.00
6. Frederick & May Construction Co Inc	NON-RESPONSIVE

COMMONWEALTH OF KENTUCKY

This is to certify that the above is a true and exact copy of the tabulation of bids received on the above referenced project, that same was advertised in the manner and form prescribed by the laws of the Commonwealth of Kentucky, and the rules and regulations of the Division of Engineering and Contract Administration in the Department for Facilities and Support Services; that sealed competitive bids were received and publicly opened and read aloud on the hour and date prescribed in this advertisement on June 10, 2020.

Susan Ward, Statewide Procurement Analyst I
Division of Engineering and Contract Administration

Upcoming Bond Forfeiture projects ready to go to bid:

1. Crockett Collieries; McCreary Co; Cost estimate- \$84,366
2. ACPKY1. LLC Whitley Co; Cost estimate- \$106,000
3. Bethel Coal; Letcher Co; Cost estimate- \$418,099
4. Crockett Collieries; Bell Co; Cost estimate- \$39,420
5. Chas Coal; Bell Co; Cost estimate- \$212,989

What is the Division of Abandoned Mine Lands?

The Division of Abandoned Mine Lands (AML) is an agency within the Department for Natural Resources that operates throughout Kentucky's coal producing counties. AML works to remedy issues caused by mining prior to 1982 and permits with forfeited bond money.

Types of Projects

AML typically has four classifications of project sites for bidding: AML, Bond Forfeiture, AMD, and Small Purchase Projects.

- **AML Projects** are generally measures alleviating issues caused by pre-1982 mining. These may include, but not limited to, slide repair, portal closures, retaining wall construction, excavation, drainage measures, demolition of mining structures, and refuse fire suppression.
- **Bond Forfeiture Projects** include some of the same construction work as AML but are funded using the forfeited bond money from coal mining permit to reclaim the site.
- **AMD Projects** are designed to abate acid mine drainage. These may include installation and maintenance of water treatment structures.
- **Small Purchase Projects** can fall into any of the aforementioned classifications but on a smaller scale (less than \$40,000) and do not require a bond.



Kentucky Division of Abandoned Mine Lands Regional Offices

Frankfort-Main Office

300 Sower Blvd, 2nd Floor
Frankfort, KY 40601
Phone: 502-564-2141
Fax: 502-564-4245

Madisonville Office

State Office Building
626 Hospital Drive
Madisonville, KY 42431
Phone: 270-824-7534
Counties Served: Breckinridge, Butler, Caldwell, Christian, Crittenden, Daviess, Hancock, Hart, Henderson, Hopkins, Logan, McLean, Muhlenberg, Ohio, Todd, Union, Webster

Prestonsburg Office

3140 South Lake Drive, Suite 6
Prestonsburg, KY 41653
Phone: 606-889-1741
Counties Served: Boyd, Carter, Elliott, Floyd, Greenup, Johnson, Lawrence, Magoffin, Martin, Menifee, Morgan, Pike

London Office

3rd Floor State Office Bldg.
85 State Police Road
London, KY 40741
Phone: 606-330-2085
Counties Served: Bell, Clay, Clinton, Estill, Jackson, Knox, Laurel, Lee, McCreary, Owsley, Pulaski, Rockcastle, Wayne, Whitley, Wolfe

Hazard Office

Hal Rogers Center
101 Bulldog Lane, Suite 103
Hazard, KY 41701
Phone: 606-487-1110
Counties Served: Breathitt, Harlan, Knott, Leslie, Letcher, Perry

For Employment Opportunities,

Go To: <https://kentucky.gov/employment/Pages/default.aspx>



KENTUCKY DIVISION OF ABANDONED MINE LANDS



Contractor Information

How to Become A Contractor

Create an eProcurement account

- ◊ Visit: <https://emars311.ky.gov/webapp/vssprdonline/AHtSelService>
- ◊ Click the REGISTER button on the bottom left and enter company or personal information

How to View Active Project Solicitations

There are two (2) ways to see projects open for bidding.

- Option 1: Login to eProcurement as listed above
- Option 2: Lynn Imaging, see steps below

How to Order Plans

- ◊ Visit: <https://www.lynnimaging.com/distribution>
- ◊ Click the SIGN IN/REGISTER button
- ◊ Click the REGISTER HERE button and enter your company information
- ◊ Click on PUBLIC PROJECTS to view solicitations
- ◊ Select project name
- ◊ Click the ORDER/DOWNLOAD button



AML Technical Specifications and Standard Details

Project plans are designed using AML approved guidelines and engineering specifications. These can be viewed by visiting:

https://aml.ky.gov/Pages/Standard_Details.aspx



Before and After: Pit removal

Kentucky Division of Abandoned Mine Lands
300 Sower Blvd, 2nd Floor
Frankfort, KY 40601
Phone: 502-564-2141
Fax: 502-564-4245



Before and After: Highwall Elimination and Structure Removal

Bidding Process

- All projects will be shown to contractors during a Pre-Bid/Site Tour at the time and location stated in the Solicitation. Contractors meet at the announced location and tour the site with AML Staff...
- Contractor submits a sealed bid, on or before the Bid Receipt Closing date, to the Division of Engineering and Contract Administration in Frankfort, KY, according to the instructions in the Bid packet.
- Bid Bond – Each bid must be accompanied by a 5% Bid Bond. A certified check can be accepted in lieu of a bid bond.
- Bids are opened, verified and tabulated. And the results are posted to the Lynn Imaging Planroom Website.
- The successful low bidder will be reviewed before contract is awarded.
- The low bidder will receive an Intent to Award Letter and forms. They then have 14 calendar days to send the bonds and insurance that are required. Emergency Projects have 7 days.
- After all the necessary documentation is received, the contract will be issued.
- Contractors are not to start work until the contract is issued.
- A Pre-Construction Meeting, with the contractor, will be held by AML Staff prior to starting the project.



Community and Economic Development Grants

AML Pilot Projects

Pilot Program Details

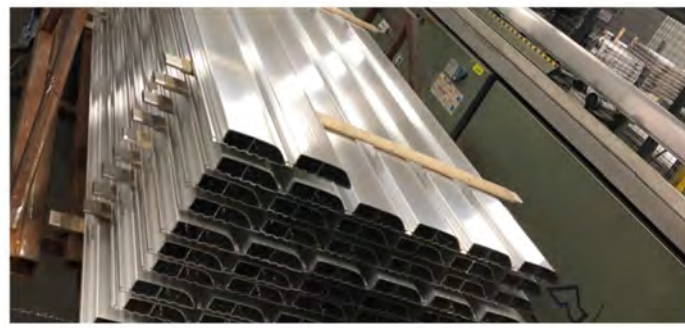
- Born as a proof of concept for the RECLAIM act
- Focused on Community Development and Economic Growth
- Requires an **AML Nexus**
- Administered by KY AML
- First grant year 2016
- Kentucky awards:
 - 2016 – 30 Million
 - 2017 – 25 Million
 - 2018 – 25 Million
 - 2019 – 25 Million
 - 2020 – 25 Million
- 130 Million dollars in grant funds
- Each year grant year AML has received no less than 40 applications for the Pilot program
- The average annual total request has been 140 million dollars
- Applications are processed by AML, then recipients are selected by the panel headed by the Cabinet Secretary
- Selected Applications must go through a **Vetting Process** with **OSMRE**
- Join in an **MOA** with the Cabinet
- Have a **NEPA** study conducted on the site
- Received **ATP** from OSMRE



What Makes a Good Pilot Project?

Key factors and Important Qualities

Industrial – Job growth or retention



Infrastructure – Supply lines to areas for spurring development



Tourism – Micro and Macro Scale Applications



Education – A focus on retraining those impacted by the economic downturn





2020 AML Pilot Grants

Reviews are underway

Application Period
was from
June 1st
Until
August 1st

Winning Qualities for AML PILOT Projects



Focused

Targeted objectives
Doesn't overreach
Leaves the sink in the Kitchen



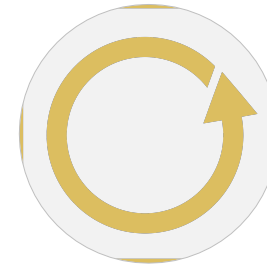
Detailed

Clear action steps
Demonstrates planning
More than a concept
Includes Metrics



Driven

Has a definitive leader
Shows passion for the project and community



Sustainable

Future funding is clearly established
Considers Return on Investment
Projects independence



Practical

Is creative, but not ridiculous
Thinks big with a solid foundation
Understands the environment and community

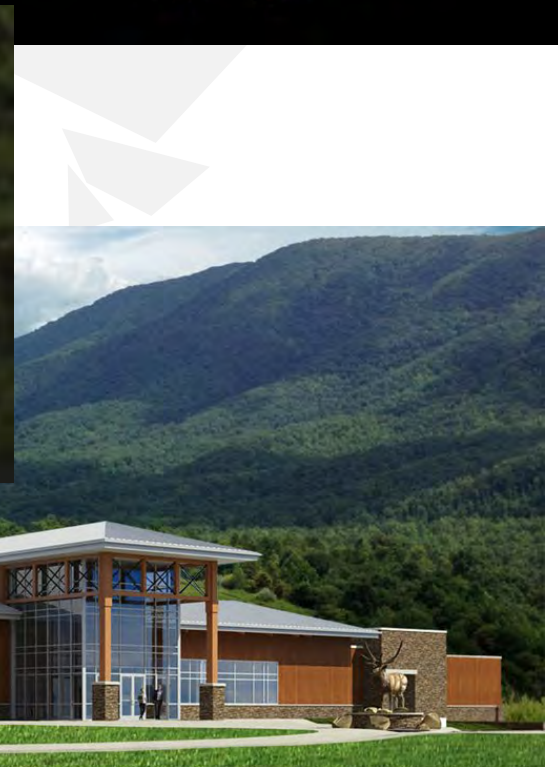


Professional

Application is concise and correct
Materials are tight
Demonstrates Partnerships

Appalachian Wildlife Center (Re-Branded as Boone's Ridge)

- \$12.5 Million
- Bell County
- Estimated \$32 million dollar total investment
- Create a wildlife viewing area with elk as the primary attraction, a state of the art visitor and learning center
- Located on a 12,000-acre tract of land



eKentucky Advanced Manufacturing Institute

- \$2.5 million
- Johnson County
- Computer Numeric Controlled (CNC) skills training program
- Adult and Youth Classes

eKAMI

EASTERN KENTUCKY ADVANCED
MANUFACTURING INSTITUTE



Impact Outdoor Adventures Campground

- \$700,000
- Clay County
- Development of an RV Park with Bath House



Prestonsburg to David Rails to Trails

- \$1.95 Million
- Floyd County
- Acquire Right-of-Way for 11.4 miles of Rail Bed
- Develop a Multi-Use Trail with interpretive signage for Walking, Cycling and Horseback Riding



Royalton Trail Town

- \$1.9 million
- Magoffin County
- Development of a Trail Town site at Royalton, KY that will include an RV Park, Primitive Camping, Cabins, Bath House, Amphitheater, Store and Restaurant.
- The site is adjacent to the Dawkins Trail, an 18 Mile-Long Multi-Use Trail.





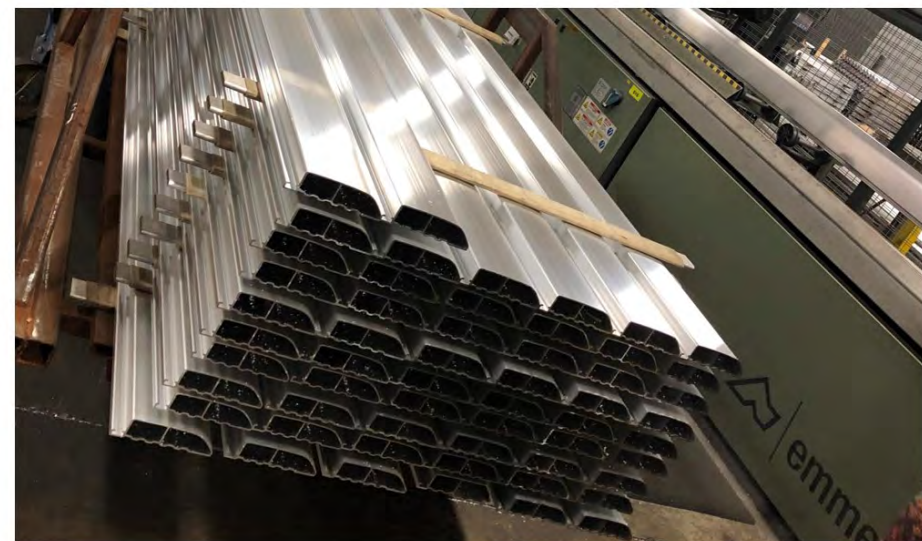
Coalfields Industrial Park Gas Supply

- \$900,000
- Perry County
- Install 6 Miles of Natural Gas Pipeline to the Coalfields Industrial Park



Dajcor

- \$6.5 Million
- Perry County
- Purchase an Aluminum Extrusion Press
- Manufacturer projects 220 new jobs.



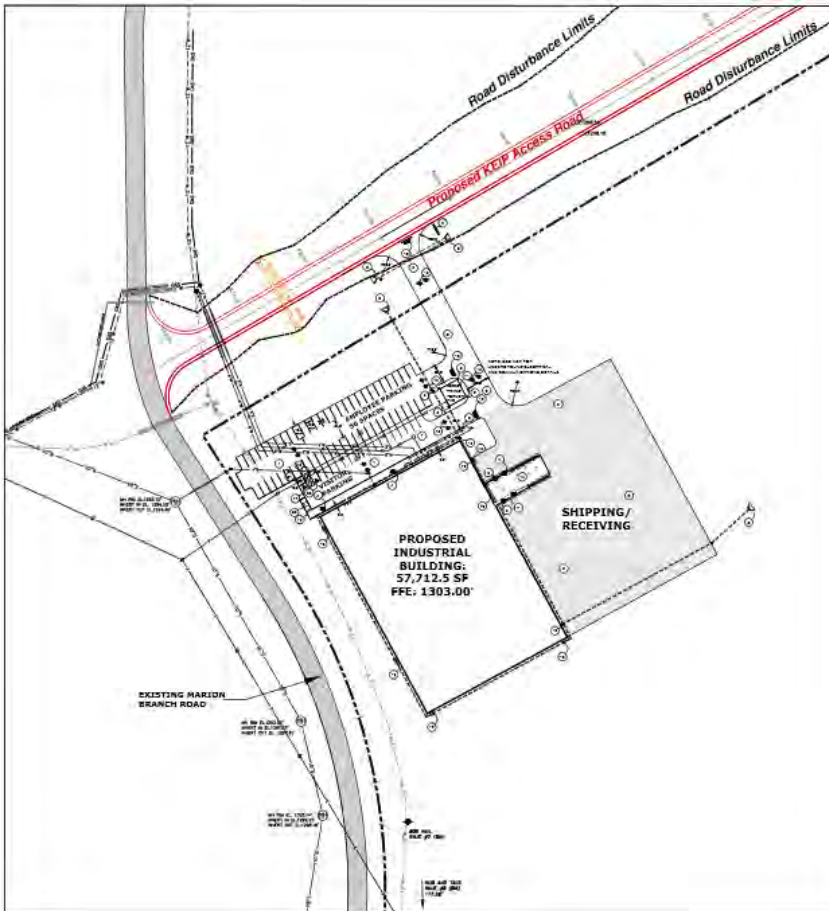
Pikeville Medical Center Children's Hospital

- \$4.78 Million
- Pike County, City of Pikeville
- Renovate and Equip a 13,350 Square Foot Area on the 2nd Floor of Pikeville Medical Center
- Offer Regional Pediatric Services for a 23 County Area.



KEIP Spec Building

- \$6 Million
- Pike County, City of Pikeville
- Develop and Construct a 65,000 Square Foot Spec Building at the Kentucky Enterprise Industrial Park







Martin Water System Controls and Modifications

- \$2.25 million
- Martin County
- Raw Water Intake Modifications
- Upgraded Water Treatment Plant
- Replacement of Degraded Water Lines



Paintsville Economic Development Sewer Expansion

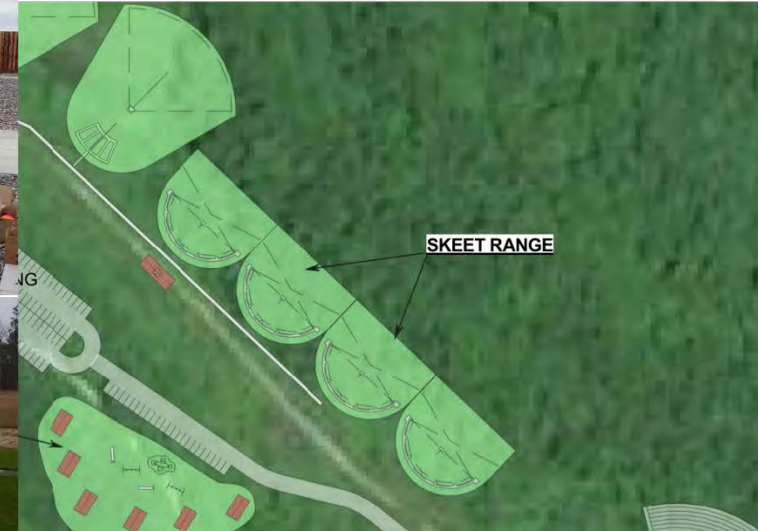
- \$4 Million
- Johnson County
- Construct 30,000 Feet of Force Main Sewer Pipe and New Lift Stations
- Upgrade Aeration System at Honey Branch Sewer Treatment Plant
- Project will Divert Volume from Paintsville Plant to Honey Branch Plant
- Freed Sewer Capacity in Paintsville will allow for Removal of Tap Ban and Make Available Sewer Taps for Industrial, Commercial and Residential Development



Thunder Mountain Phase I and II

- \$3Million
- Letcher County
- Development of Sport Shooting Resort Park
- Ranges, Recreation Facilities, Clubhouse, RV Park, Amphitheater and Tree House Cabins

Trap and Skeet



- Clay Range
- Rifle Range
- Pistol Range
- Archery Range
- 3D Archery Range
- Skeet
- Trap
- Paint Ball
- Obstacle Course
- Open-Air Club House
- Amphitheater
- RV Hook-up
- Tree House Rental
- Casting Ponds



THUNDERMOUNTAIN
SPORT SHOOTING RESORT PARK



THUNDERMOUNTAIN
SPORT SHOOTING RESORT PARK

A short summary of PEM Talking points

AML Grant Projections
Reauthorization and Reclaim Act
AML Bond Forfeiture Opportunities
AML Pilot Program

- The Coal Industry has funded the AML Program throughout the nation for the last 38 years and you should take more credit for all of the good work in reclaiming historic coal mines
- These next few years will be critical in shaping the future of the AML program and determining whether it fades away or whether AML reclamation work can continue
- Bond Forfeiture Reclamation Projects will continue and there are opportunities for those with reclamation experience to help bring those sites into compliance.
- There are opportunities for Engineers and Consultants as a new group of AML Pilot Projects will soon be selected

Thank You



Bob Scott P.E., P.L.S.

502-782-6761 ☎

BobF.Scott@ky.gov ✉